

**CATALOGUS: FREROX**

**PLASTIC PARTS FOR ELECTRICAL EQUIPMENT**

**FREROX ELECTRONICS**

**15**

**RIVET**



**KNOB-RIVET**

**DL-11**

CLIP MATERIAL:NYLON 66UL94V-2/PC UL94V-2  
 PIN MATERIAL:NYLON 66 UL94V-2  
 DL-11 MATERIAL:POM  
 COLOR:BLACK/WHITE/NATURAL  
 UNIT:mm

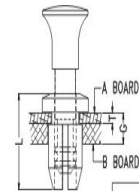
PARTNO	PACKAGE
DL-11	500



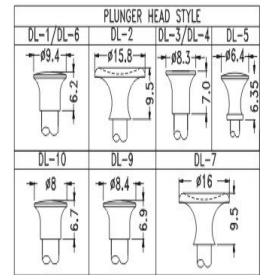
**KNOB-RIVET**

**DL**

CLIP MATERIAL:NYLON 66UL94V-2/PC UL94V-2  
 PIN MATERIAL:NYLON 66 UL94V-2  
 DL-11 MATERIAL:POM  
 COLOR:BLACK/WHITE/NATURAL  
 UNIT:mm



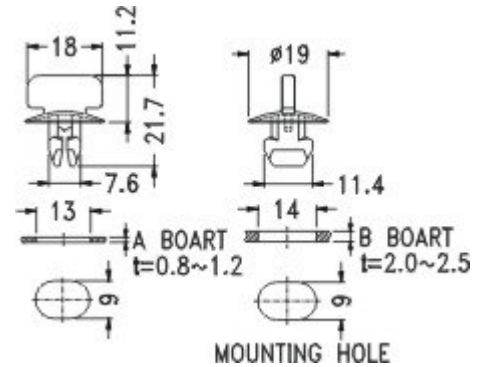
PARTNO	L	T	G	HOLE		PACKAGE
				A BOARD	B BOARD	
DL-1	11.1	1.6	2.0~4.2			500
DL-2						
DL-3	10.4	1.6	2.0~4.2			
DL-4	11.4	2.5	3.0~5.2			
DL-5	9.5	1.6	2.0~3.6			
DL-6	12.0	2.4	3.5			
DL-7						
DL-9	13.0	4.3	6.9			
DL-10	11.0	2.0	5.5			



**TWIST-LOCKER**

**TF-1**

MATERIAL:NYLON 66(UL)  
 FLAME CLASS:94V-2  
 COLOR:BLACK  
 UNIT:mm

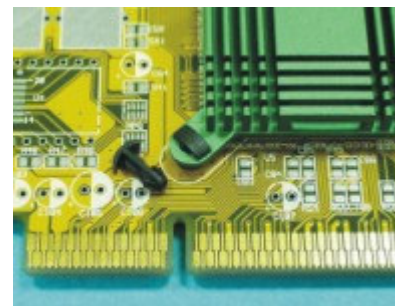
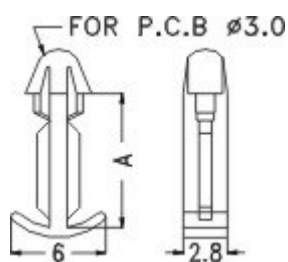


PARTNO	PACKAGE
TF-1	200

**CLIP RIVET**

**MBB-6A**

MATERIAL: NYLON 66(UL)  
 FLAME CLASS: 94V-2  
 COLOR: BLACK  
 UNIT: mm

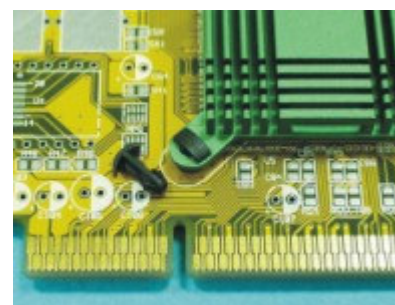
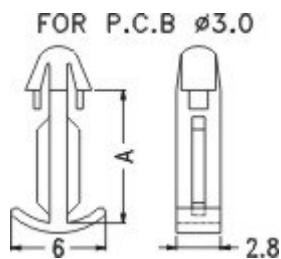


PART NO	A	PACKAGE
MBB-6A	6.0	2000

**CLIP RIVET**

**MBB**

MATERIAL: NYLON 66(UL)  
 FLAME CLASS: 94V-2  
 COLOR: BLACK  
 UNIT: mm

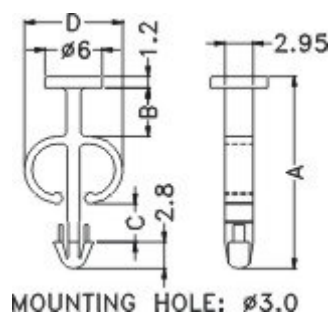


PART NO	A	PACKAGE
MBB-6	6.0	2000
MBB-7	7.0	
MBB-8	8.0	

**CLIP RIVET**

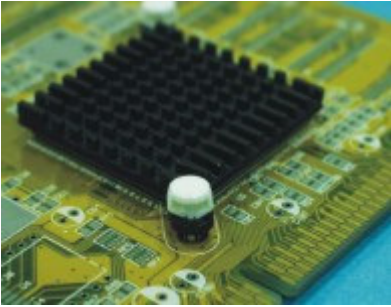
**MEE**

MATERIAL: NYLON 66(UL)  
 FLAME CLASS: 94V-2  
 COLOR: NATURAL  
 UNIT: mm



PART NO.	A	B	C	D	PACKAGE
MEE-1	20.3	5.1	4.0	10.1	1000
MEE-2	17.0	2.5	3.4	10.3	

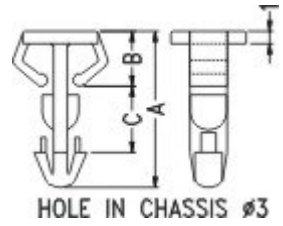




**CLIP RIVET**

**MCC**

MATERIAL:NYLON 66(UL)  
 FLAME CLASS:94V-2  
 COLOR:NATURAL/BLACK  
 UNIT:mm



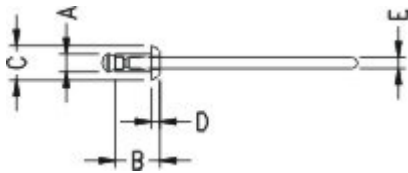
PART NO	A	B	C	PACKAGE
MCC-1	12.5	4.4	5.3	2000
MCC-2	12.7	5.3	4.7	
MCC-3	10.3	5.0	2.5	



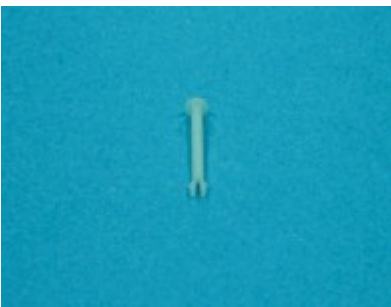
**POP RIVET**

**CR**

MATERIAL:PC(UL)/NYLON 66(UL)  
 FLAME CLASS:94V-2  
 COLOR:NATURAL/BLACK  
 UNIT:mm



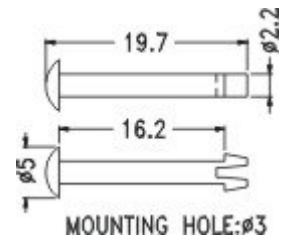
PART NO	A	B	C	D	E	PACKAGE
CR32-1	3.2	6.4	6.4	1.4	2.1	500
CR32-2	3.2	9.6	6.4	1.4	2.1	
CR32-3	3.2	12.7	6.4	1.4	2.1	
CR40-1	4.0	6.4	8.0	1.8	2.4	
CR40-2	4.0	9.6	8.0	1.8	2.4	
CR40-3	4.0	12.6	8.0	1.8	2.4	
CR48-1	4.8	8.0	9.6	2.0	2.8	
CR48-2	4.8	11.2	9.6	2.0	2.8	
CR48-3	4.8	14.4	9.6	2.0	2.8	
CR56-1	5.6	9.6	12.0	2.2	3.4	
CR56-2	5.6	12.7	12.0	2.2	3.4	
CR56-3	5.6	15.9	12.0	2.2	3.4	



**RIVET**

**PNL-18**

MATERIAL:NYLON 66(UL)  
 FLAME CLASS:94V-2  
 COLOR:NATURAL  
 UNIT:mm

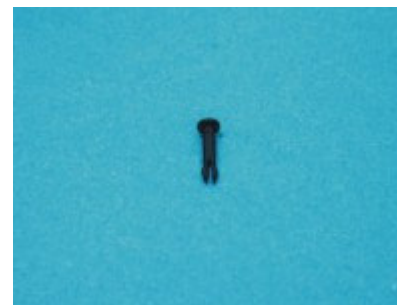
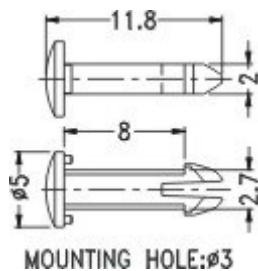


PARTNO	PACKAGE
PNL-18	1000

**RIVET**

**PNL-8**

MATERIAL:NYLON 66(UL)  
 FLAME CLASS:94V-2  
 COLOR:NATURAL/BLACK  
 UNIT:mm

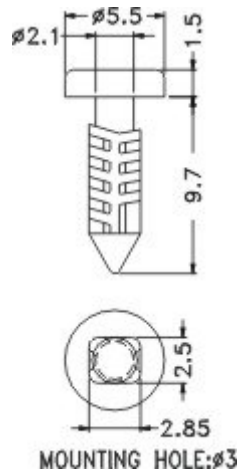


PARTNO	PACKAGE
PNL-8	1000

**RIVET**

**MBW-21**

MATERIAL:NYLON 66(UL)  
 FLAME CLASS:94V-2  
 COLOR:NATURAL  
 UNIT:mm

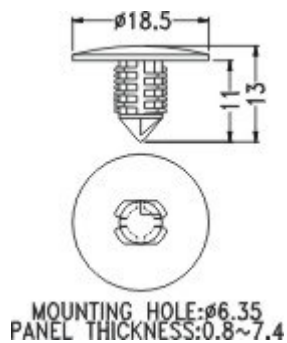


PARTNO	PACKAGE
MBW-21	1000

**RIVET**

**MBW6-11**

MATERIAL:NYLON 66(UL)  
 FLAME CLASS:94V-2  
 COLOR:BLACK  
 UNIT:mm



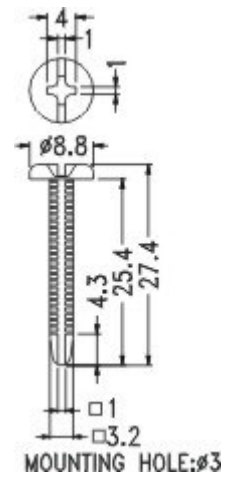
PARTNO	PACKAGE
MBW6-11	1000



**PUSH RIVET**

**MBW-18**

MATERIAL: NYLON 66(UL)  
 FLAME CLASS: 94V-2  
 COLOR: NATURAL  
 UNIT: mm



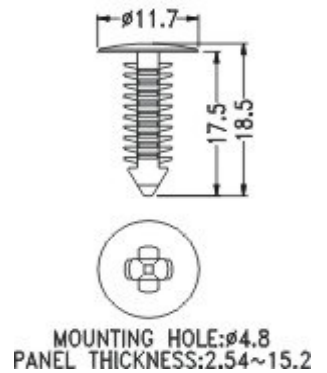
PARTNO	PACKAGE
MBW-18	1000



**PUSH RIVET**

**MBW-17**

MATERIAL: NYLON 66(UL)  
 FLAME CLASS: 94V-2  
 COLOR: BLACK  
 UNIT: mm



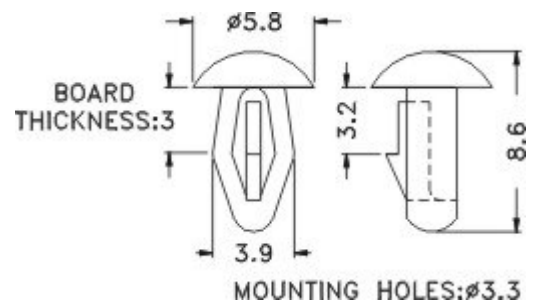
PARTNO	PACKAGE
MBW-17	1000



**PUSH RIVET**

**MBS3-3**

MATERIAL: NYLON 66(UL)  
 FLAME CLASS: 94V-2  
 COLOR: NATURAL/BLACK  
 UNIT: mm

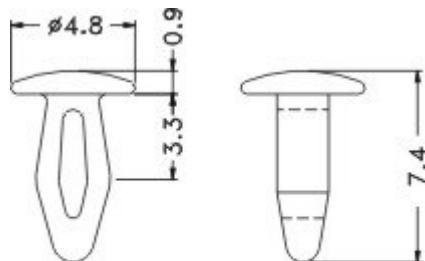


PARTNO	PACKAGE
MBS3-3	2000

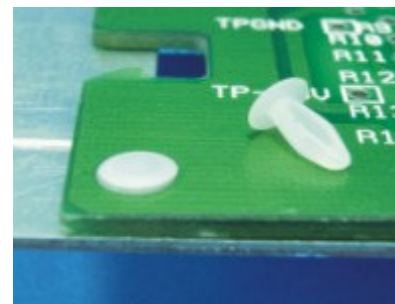
**RIVET**

**MB-16**

MATERIAL: NYLON 66(UL)  
 FLAME CLASS: 94V-2  
 COLOR: NATURAL  
 UNIT: mm



CHASSIS THICKNESS: 2.0~2.5  
 HOLE IN CHASSIS  $\varnothing 2.5$

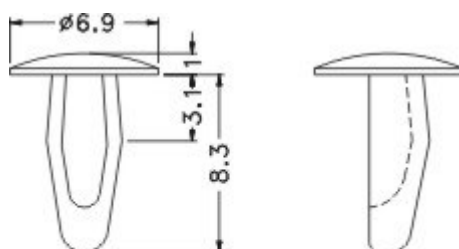


PARTNO	PACKAGE
MB-16	1000

**RIVET**

**MB-7**

MATERIAL: NYLON 66(UL)  
 FLAME CLASS: 94V-2  
 COLOR: NATURAL  
 UNIT: mm



CHASSIS THICKNESS: 2.0~2.5  
 HOLE IN CHASSIS  $\varnothing 3.1 \sim \varnothing 3.2$

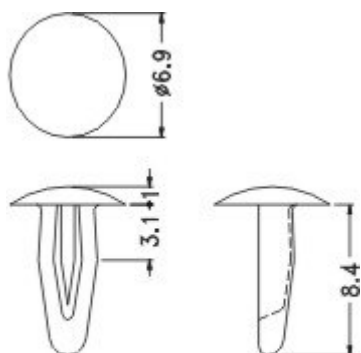


PARTNO	PACKAGE
MB-7	2000

**RIVET**

**MB-6**

MATERIAL: NYLON 66(UL)  
 FLAME CLASS: 94V-2  
 COLOR: NATURAL  
 UNIT: mm



CHASSIS THICKNESS: 2.0~2.5  
 HOLE IN CHASSIS  $\varnothing 3.1 \sim \varnothing 3.2$



PARTNO	PACKAGE
MB-6	2000

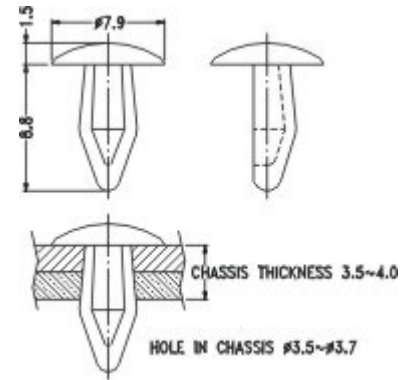


PARTNO	PACKAGE
MB-5	2000

**RIVET**

**MB-5**

MATERIAL:NYLON 66(UL)  
 FLAME CLASS:94V-2  
 COLOR:NATURAL  
 UNIT:mm

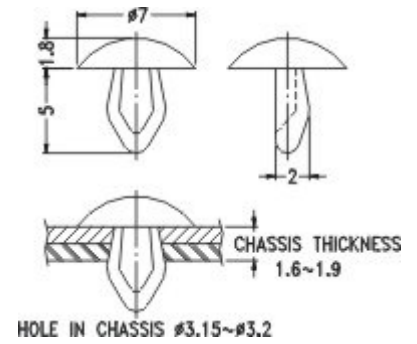


PARTNO	PACKAGE
MB-4	2000

**RIVET**

**MB-4**

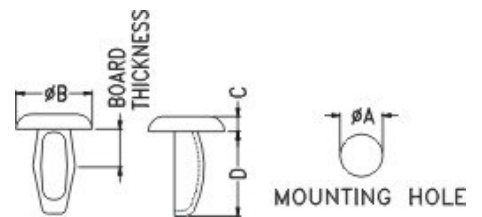
MATERIAL:NYLON 66(UL)  
 FLAME CLASS:94V-2  
 COLOR:NATURAL  
 UNIT:mm



**RIVET**

**MB**

UNIT:mm



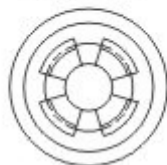
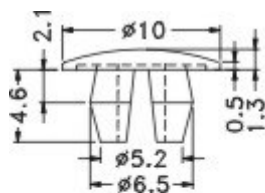
PART NO	BOARD THICKNESS	A	B	C	D	MATERIAL	COLOR	PACKAGE
MB-1	2.0~3.1	3.3~3.5	7.6	1.6	8.6	P.O.M UL94HB	WHITE	2000
MB-1N	2.0~3.1	3.3~3.5	7.6	1.6	8.6	NYLON 66 UL94V-2	NATURAL	
MB-1(B)	2.0~3.1	3.3~3.5	7.6	1.6	8.6	P.O.M UL94HB	BLACK	
MB-2	3.4~4.0	3.0~4.0	7.6	1.3	10.8	NYLON 66 UL94V-2	NATURAL	1000
MB-2(W)						P.O.M UL94HB	WHITE	
MB-2(B)	3.0~4.0	3.3~3.6	7.6	1.3	10.8	P.O.M UL94HB	BLACK	2000
MB-3	3.4~4.0	2.0~3.5	7.3	1.4	8.4	NYLON 66 UL94V-2	NATURAL	
MB-3(B)						BLACK		



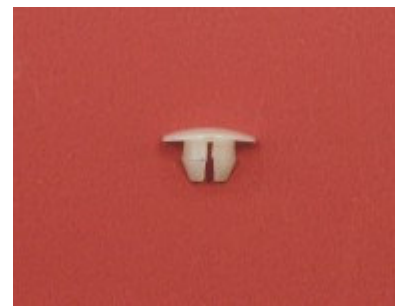
**COVER RIVET**

**MBT6-2**

MATERIAL:NYLON 66(UL)  
 FLAME CLASS:94V-2  
 COLOR:NATURAL  
 UNIT:mm



MOUNTING HOLE  $\varnothing 6$

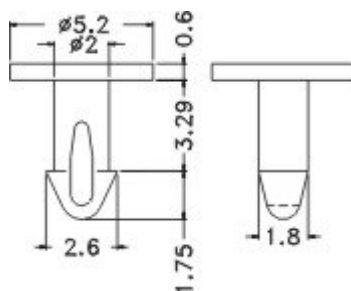


PARTNO	PACKAGE
MBT6-2	2000

**RIVET**

**MB-14**

MATERIAL:NYLON 66(UL)  
 FLAME CLASS:94V-2  
 COLOR:GRAY  
 UNIT:mm

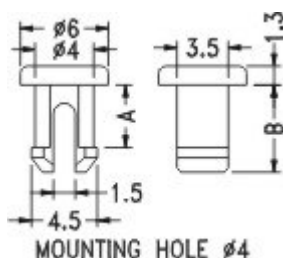


PARTNO	PACKAGE
MB-14	2000

**RIVET**

**MBT**

MATERIAL:NYLON 66(UL)  
 FLAME CLASS:94V-2  
 COLOR:NATURAL  
 UNIT:mm



MOUNTING HOLE  $\varnothing 4$



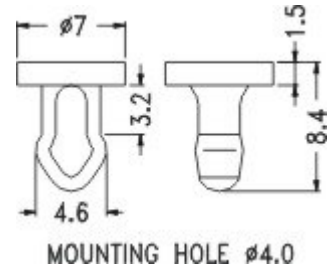
PART NO.	A	B	PACKAGE
MBT-7	4.3	6.0	2000
MBT4-2	2.0	3.7	



**RIVET**

**MBT-2**

MATERIAL: NYLON 66(UL)  
 FLAME CLASS: 94V-2  
 COLOR: BLACK  
 UNIT: mm



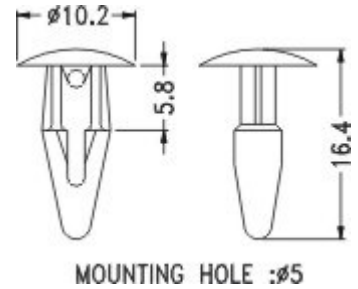
PARTNO	PACKAGE
MBT-2	2000



**RIVET**

**MBT-1**

MATERIAL: P.O.M(UL)/NYLON 66(UL)  
 FLAME CLASS: 94HB/94V-2  
 COLOR: WHITE/BLACK/SILVER GRAY  
 UNIT: mm



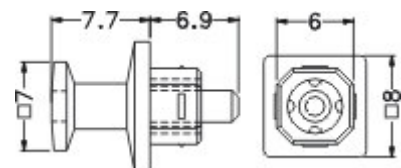
PARTNO	PACKAGE
MBT-1	1000



**COVER**

**OPC-1**

MATERIAL: ABS(UL)  
 FLAME CLASS: 94HB  
 COLOR: BLACK  
 UNIT: mm

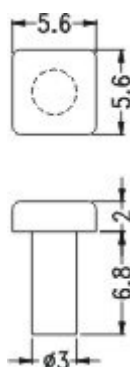


PARTNO	PACKAGE
OPC-1	1000

**RIVET**

**ACSR-7**

MATERIAL:ABS  
 COLOR:BLACK  
 UNIT:mm

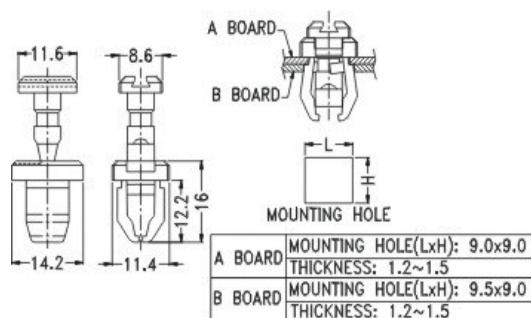


PARTNO	PACKAGE
ACSR-7	2000

**PUSH-LOCK**

**TFA-2**

MATERIAL:PC(UL)  
 FLAMEP CLASS:94V-2  
 COLOR:BLACK  
 UNIT:mm

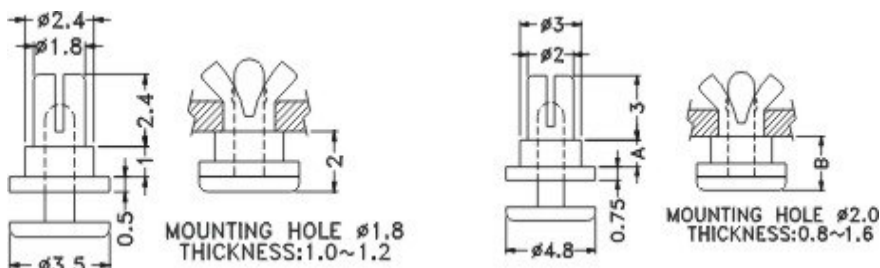


PARTNO	PACKAGE
TFA-2	200

PARTNO	PACKAGE
SRMA-2	2000

PART NO.	A	B	PACKAGE
SRMA-4	2.5	4.0	2000
SRMA-5	3.5	5.0	

1-44



**RIVET**

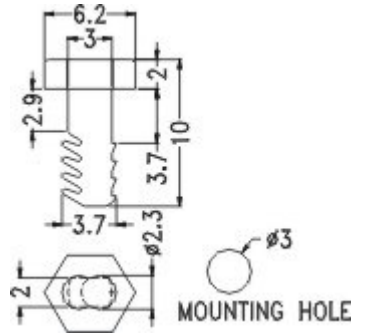
**SRMA**

MATERIAL:NYLON 66(UL)  
 FLAME CLASS:94V-2  
 COLOR:NATURAL/BLACK  
 UNIT:mm



**RIVET**  
**MBW3-8**

MATERIAL: NYLON 66(UL)  
FLAME CLASS: 94V-2  
COLOR: NATURAL  
UNIT: mm

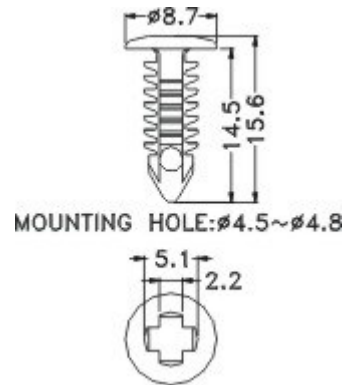


PARTNO	PACKAGE
MBW3-8	1000

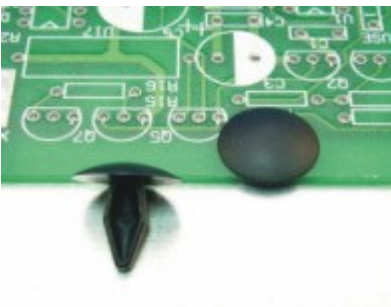


**RIVET**  
**MBW14**

MATERIAL: NYLON 66(UL)  
FLAME CLASS: 94V-2  
COLOR: NATURAL  
UNIT: mm

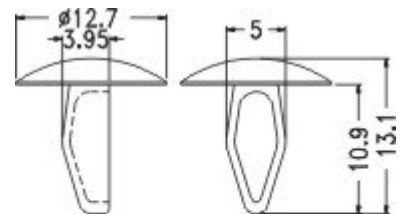


PARTNO	PACKAGE
MBW14	1000



**RIVET**  
**MB18**

MATERIAL: NYLON 66(UL)  
FLAME CLASS: 94V-2  
COLOR: NATURAL  
UNIT: mm



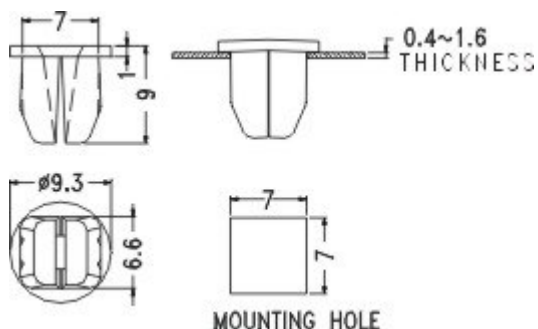
PARTNO	PACKAGE
MB18	1000

CHASSIS THICKNESS: 2.0~3.5  
HOLE IN CHASSIS  $\phi 4.5$

**SCREW PLUG**

**ESS-1**

MATERIAL: NYLON 66(UL)  
 FLAME CLASS: 94V-2  
 COLOR: NATURAL  
 UNIT: mm

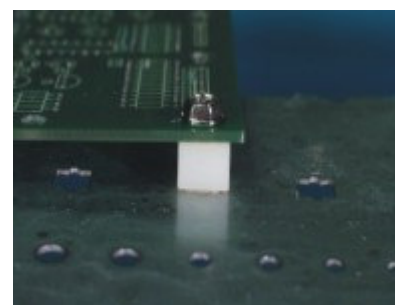
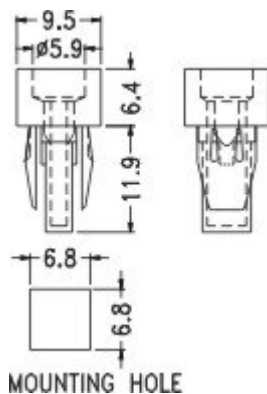


PART NO	PACKAGE
ESS-1	1000

**SCREW PLUG**

**ES-1**

MATERIAL: NYLON 66(UL)  
 FLAME CLASS: 94V-2  
 COLOR: NATURAL  
 UNIT: mm

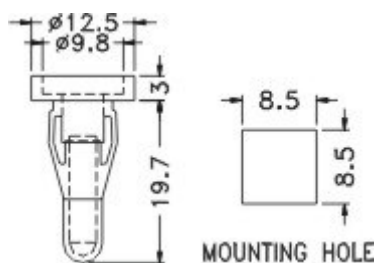


PART NO	PACKAGE
ES-1	1000

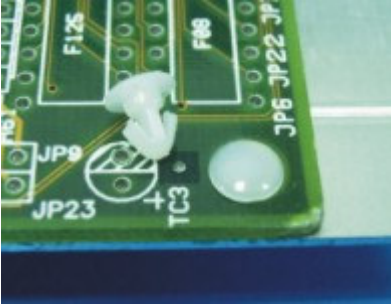
**SCREW PLUG**

**YES-3**

MATERIAL: NYLON 66(UL)  
 FLAME CLASS: 94V-2  
 COLOR: NATURAL  
 UNIT: mm



PART NO	PACKAGE
YES-3	500

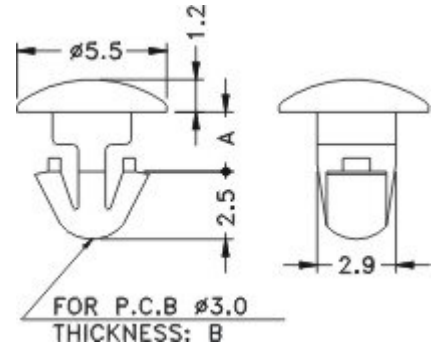


**RIVET**

**MBL3**

MATERIAL: NYLON 66(UL)  
 FLAME CLASS: 94V-2  
 COLOR: NATURAL  
 UNIT: mm

PART NO.	A	B	PACKAGE
MBL3-2	2.2	2.0	2000
MBL3-2.5	2.5	2.4	

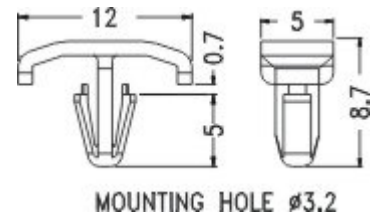


**RIVET**

**MB-12**

MATERIAL: NYLON 66(UL)  
 FLAME CLASS: 94V-2  
 COLOR: NATURAL  
 UNIT: mm

PARTNO	PACKAGE
MB-12	1000

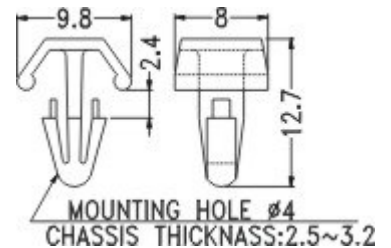


**RIVET**

**MB-10**

MATERIAL: NYLON 66(UL)  
 FLAME CLASS: 94V-2  
 COLOR: NATURAL  
 UNIT: mm

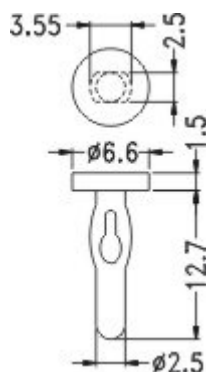
PARTNO	PACKAGE
MB-10	1000



**RIVET**

**PIC-14**

MATERIAL: NYLON 66(UL)  
 FLAME CLASS: 94V-2  
 COLOR: NATURAL  
 UNIT: mm

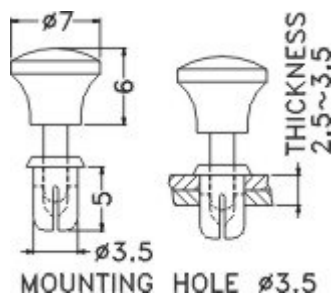


PARTNO	PACKAGE
PIC-14	1000

**KNOP-RIVET**

**SRS3.5-5P**

MATERIAL: NYLON 66(UL)  
 FLAME CLASS: 94V-2  
 COLOR: BLACK  
 UNIT: mm

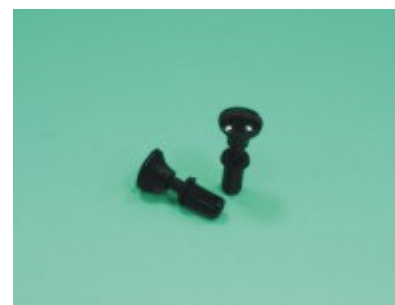
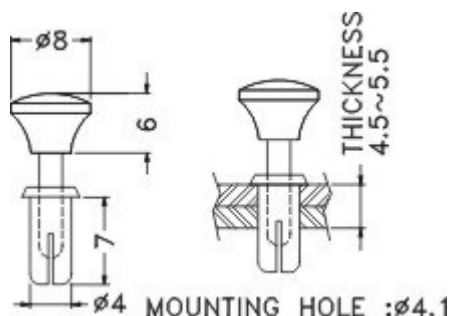


PARTNO	PACKAGE
SRS3.5-5P	1000

**KNOP-RIVET**

**SRS4-7P**

MATERIAL: NYLON 66(UL)  
 FLAME CLASS: 94V-2  
 COLOR: BLACK  
 UNIT: mm



PARTNO	PACKAGE
SRS4-7P	1000

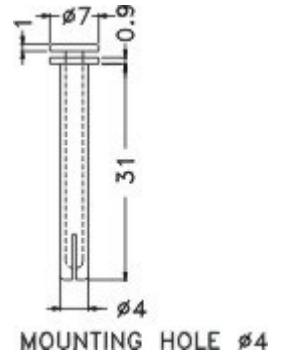


PARTNO	PACKAGE
SRF4-31	500

**RIVET**

**SRF4-31**

MATERIAL:NYLON 66(UL)  
 FLAME CLASS:94V-2  
 COLOR:BLACK  
 UNIT:mm

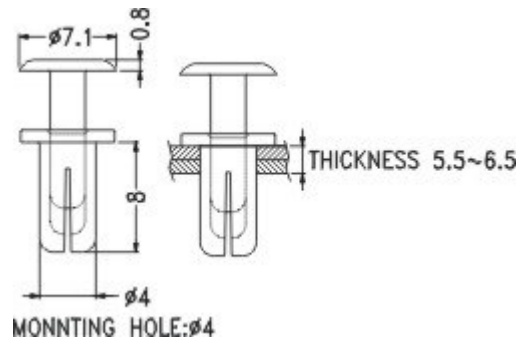


PARTNO	PACKAGE
SRF4-8	1000

**RIVET**

**SRF4-8**

MATERIAL:NYLON 66(UL)  
 FLAME CLASS:94V-2  
 COLOR:BLACK  
 UNIT:mm

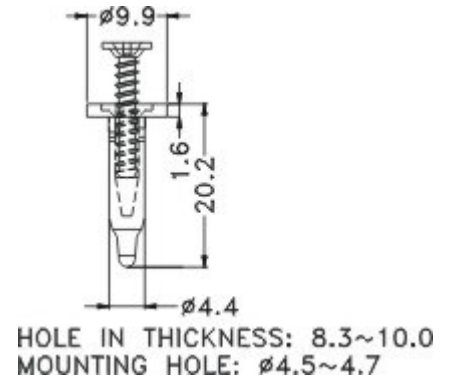


PARTNO	PACKAGE
PR-2	1000

**RIVET**

**PR-2**

MATERIAL:NYLON 66(UL)  
 FLAME CLASS:94V-2  
 COLOR:BLACK  
 UNIT:mm





**RIVET**

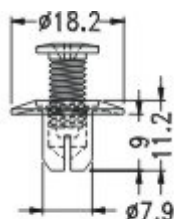
**PR-1**

MATERIAL: NYLON 66(UL)

FLAME CLASS: 94V-2

COLOR: BLACK

UNIT: mm



MOUNTING HOLE:  $\varnothing 8$



PARTNO	PACKAGE
PR-1	500

PART NO.	A	B	C	D	E	MOUNTING HOLES	PACKAGE
SR2-4	4.0	2.0	3.5	0.5	2.0~3.0	2.0	1000
SR2-5	5.0	2.0	4.8	0.75	2.5~3.5		
SR2-6	6.0	2.0	4.8	0.75	3.5~4.5		
SR2-6-3-2	3.2	2.6	5.0	1.7	1.0~2.0	2.6	
SR2-6-4-2	4.2	2.6	5.0	1.7	2.0~3.0		
SR2-6-4-8	4.8	2.6	5.0	1.4	2.5~3.4		
SR2-6-5-5	5.5	2.6	5.0	1.4	3.0~4.3		
SR2-6-7-2	7.2	2.6	5.0	1.4	3.0~4.3		
SR3-3-5	3.6	3.0	6.3	1.7	1.0~2.0	3.0	
SR3-4-5	4.5	3.0	6.3	1.7	2.0~3.2		
SR3-5-5	5.5	3.0	6.3	1.7	3.0~4.0		
SR3-6	6.0	3.0	6.3	1.7	3.5~4.5		
SR3-6-5	6.5	3.0	6.3	1.7	4.0~5.0		
SR3-7-5	7.5	3.0	6.3	1.7	5.0~6.0		
SR3-8	8.1	3.0	6.3	1.7	5.5~6.5		
SR3-9	9.1	3.0	6.3	1.7	6.5~7.5		
SR3-10	10.0	3.0	6.3	1.7	7.5~8.5		
SR3-13	13.0	3.0	6.2	1.7	10.0~11.0		
SR3-13F	13.0	3.2	5.3	1.3	10.0~11.0	3.2	
SR3-15	15.5	3.0	6.2	1.7	11.5~13.0	3.0	
SR3-18.5	18.5	3.0	6.3	1.7	15.0~16.5		
SR3-5-4-5	4.5	3.5	6.3	1.7	2.0~3.0	3.5	
SR3-5-5	5.0	3.5	6.3	1.7	2.5~3.5		
SR3-5-5-5	5.5	3.5	6.3	1.7	3.0~4.0		
SR3-5-6	6.0	3.5	6.3	1.7	3.0~4.0		
SR3-5-7	7.0	3.5	6.3	1.7	4.5~5.5		
SR3-5-9	9.0	3.45	6.3	1.7	6.0~7.0		
SR4-5	5.0	4.0	7.8	1.9	2.5~3.5		4.0
SR4-6	6.1	4.0	7.8	1.9	3.5~4.5		
SR4-6F	6.1	4.0	7.5	1.1	3.0~4.0		
SR4-7	7.1	4.0	8.0	2.0	4.5~5.5		
SR4-7F	7.2	4.0	7.5	1.1	3.5~5.0		
SR4-8	8.0	4.0	8.0	2.0	5.5~6.5		
SR4-8F	8.2	4.0	7.5	1.1	5.5~6.5		
SRF4-8	8.0	4.0	7.1	0.8	5.5~6.5		
SR4-9	9.0	4.0	8.0	2.0	6.5~7.5		
SR4-10	10.0	4.0	8.0	2.0	7.5~8.5		
SR4-10S	10.0	4.0	8.0	2.0	7.5~8.5		
SR4-12	12.0	4.0	8.0	2.0	9.5~10.5		
SR4-13F	14.5	4.0	6.4	1.0	10.0~11.0		
SR4-14	13.7	4.0	8.0	2.0	11.0~12.0		
SR4-15	15.3	4.0	8.0	2.0	11.5~13.0		
SR4-20	20.0	4.0	8.0	2.0	15.0~17.0		
SR4-25	24.5	4.0	8.0	2.0	19.0~20.5		
SR5-4-5	4.6	5.0	8.9	2.2	1.5~2.5	5.0	
SR5-4-5F	7.0	5.0	8.5	2.5	1.5~2.5		
SR5-5-5	5.5	5.0	8.9	2.2	2.5~3.5		
SR5-6-5	6.5	5.0	8.9	2.2	3.5~4.5		
SR5-7-5	7.5	5.0	8.9	2.2	4.5~5.5		
SR5-8-5	8.54	5.0	8.9	2.2	5.5~6.5		
SR6-6	6.0	6.0	12.0	2.5	2.5~4.0	6.0	



**RIVET**

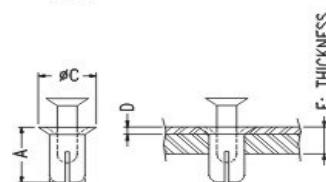
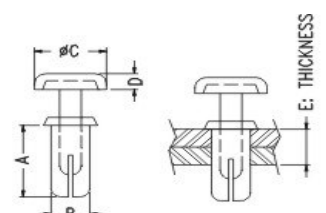
**SR**

MATERIAL: NYLON 66(UL)

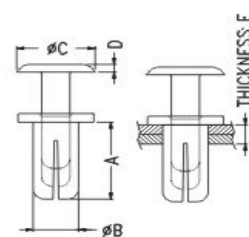
FLAME CLASS: 94V-2

COLOR: BLACK/WHITE

UNIT: mm



ONLY FOR SR4-6F, SR4-7F, SR4-8F, SR4-13F, SR3-13F



MOUNTING HOLE:  $\varnothing 4$   
FOR SRF4-8