



**CATALOGUS: FREROX**

**PLASTIC PARTS FOR ELECTRICAL EQUIPMENT**

**FREROX ELECTRONICS**

**13**

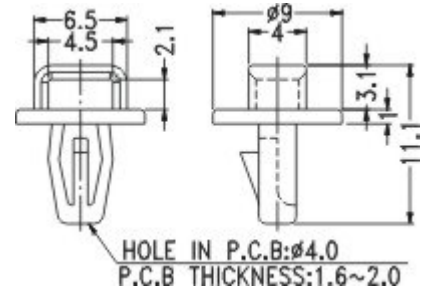
**TY-WRAP**



**TY-WRAP HOLDER**

**CCMT-2**

MATERIAL:NYLON(UL)  
 FLAME CLASS:94V-2  
 COLOR:NATURAL  
 UNIT:mm



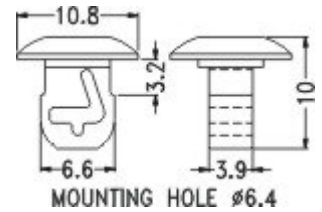
PARTNO	PACKAGE
CCMT-2	1000



**TY-WRAP HOLDER**

**CCM-1**

MATERIAL:NYLON(UL)  
 FLAME CLASS:94V-2  
 COLOR:NATURAL  
 UNIT:mm



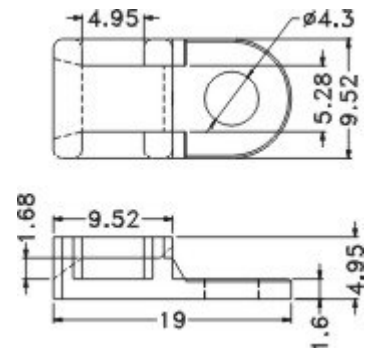
PARTNO	PACKAGE
CCM-1	1000



**TY-WRAP HOLDER**

**TH-4**

MATERIAL:NYLON(UL)  
 FLAME CLASS:94V-2  
 COLOR:NATURAL  
 UNIT:mm

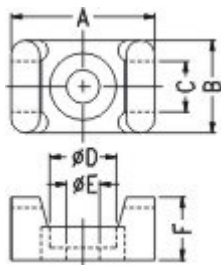


PARTNO	PACKAGE
TH-4	1000

**TY-WRAP HOLDER**

**TH**

MATERIAL: NYLON(UL)  
 FLAME CLASS: 94V-2  
 COLOR: NATURAL  
 UNIT: mm



PART NO	A	B	C	D	E	F	PACKAGE
TH-2	15.2	9.7	5.2	6.9	3.5	6.6	1000
TH-2S	13.3	8.2	3.6	5.9	3.2	5.85	

**TY-WRAP HOLDER**

**TM**

MATERIAL: NYLON(UL)  
 FLAME CLASS: 94V-2  
 COLOR: NATURAL  
 UNIT: mm

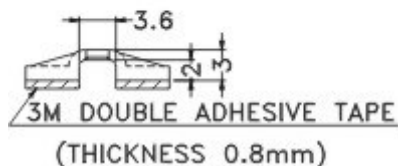
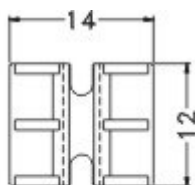


PART NO.	A	B	C	D	E	F	PACKAGE
TM-2S6	14.9	9.5	5.5	7.0	3.7	7.2	1000
TM-2S8	14.9	9.5	5.6	7.8	4.5	7.2	
TM-3S8	21.9	16.1	9.1	7.8	4.5	9.7	500
TM-3S10	21.9	16.1	9.2	9.6	5.0	9.7	
TM-3S25	21.9	16.1	9.2	12.6	6.4	9.7	

**TY-WRAP HOLDER**

**THU-2**

MATERIAL: NYLON(UL)  
 FLAME CLASS: 94V-2  
 COLOR: BLACK  
 UNIT: mm



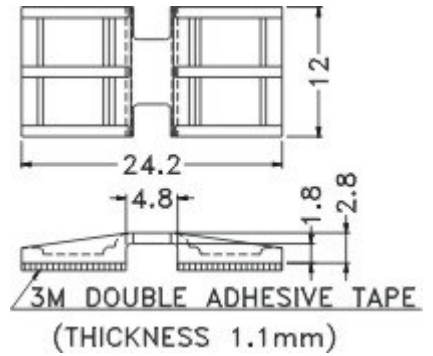
PARTNO	PACKAGE
THU-2	1000



**TY-WRAP HOLDER**

**THU-1**

MATERIAL:NYLON(UL)  
 FLAME CLASS:94V-2  
 COLOR:BLACK  
 UNIT:mm



PARTNO	PACKAGE
THU-1	1000



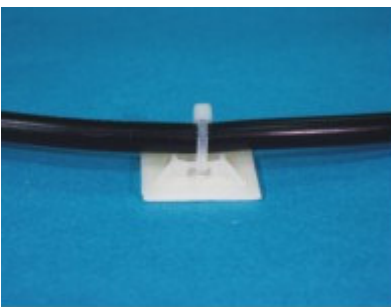
**TY-WRAP HOLDER**

**CM-25**

MATERIAL:NYLON(UL)  
 FLAME CLASS:94V-2  
 COLOR:NATURAL  
 UNIT:mm



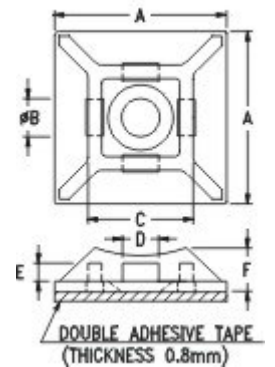
PARTNO	PACKAGE
CM-25	500



**TY-WRAP HOLDER**

**CM-H**

MATERIAL:NYLON(UL)  
 FLAME CLASS:94V-2  
 COLOR:NATURAL  
 UNIT:mm



PARTNO	A	B	C	D	E	F	PACKAGE
CM-19S	19.0	4.0	11.6	4.0	1.9	5.0	500
CM-28	27.8	5.6	13.2	5.6	2.0	5.2	250



**TY-WRAP HOLDER**

**CM**

MATERIAL: NYLON(UL)  
 FLAME CLASS: 94V-2  
 COLOR: NATURAL  
 UNIT: mm

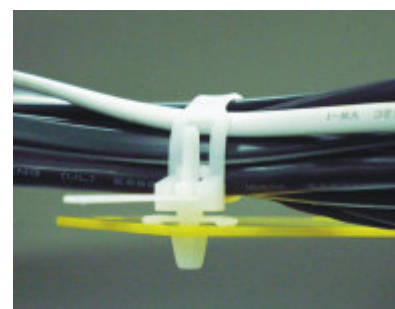
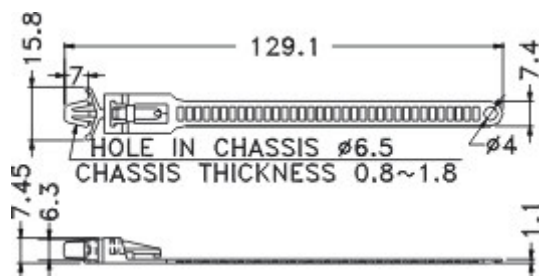


PART NO.	A	B	C	D	PACKAGE
CM-13	13.0	3.2	3.2	1.3	1000
CM-19	19.1	4.0	4.0	1.6	500
CM-20	20.1	4.8	4.2	1.5	

**FIXED-TY-WRAP**

**KYCB-129**

MATERIAL: NYLON 66(UL)  
 FLAME CLASS: 94V-2  
 COLOR: NATURAL  
 UNIT: mm

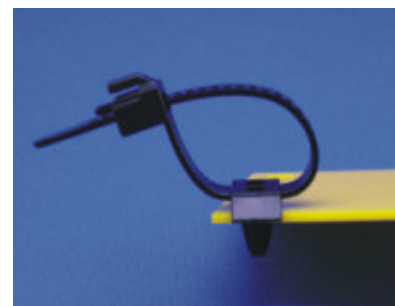
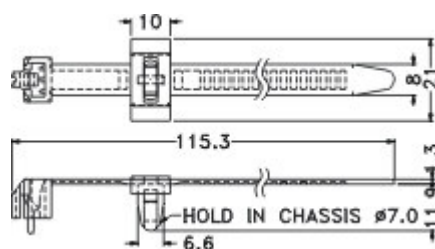


PARTNO	PACKAGE
KYCB-129	250

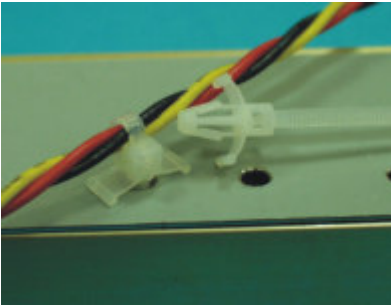
**FIXED-TY-WRAP**

**STC-115**

MATERIAL: NYLON 66(UL)  
 FLAME CLASS: 94V-2  
 COLOR: BLACK  
 UNIT: mm



PARTNO	PACKAGE
STC-115	1000

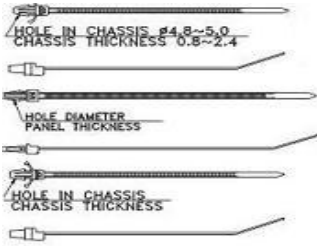


**FIXED-TY-WRAP**

**GTP**

MATERIAL:NYLON 66(UL)  
 FLAME CLASS:94V-2  
 COLOR:NATURAL  
 UNIT:mm

PART NO.	Approx. Length mm(inch)	Approx. Width mm(inch)	Max. Bundle Dia. mm(inch)	Min. LOOP Tensile Strength kg(lbs)	Hole Diameter	Max. Panel Thickness	STYLE	PACKAGE	
GTP-130ST	132 (5.12)	4.8 (0.19)	25 (0.98)	22.2 (50)	6.4 (0.252)	3.2 (0.126)	3	1000	
GTP-170ST	175 (6.69)		38 (1.50)						
GTP-190ST	200 (7.68)		45 (1.77)						
GTP-110M	110 (4.33)	2.5 (0.10)	22 (0.87)	8.1 (18)	4.8~5.0 (0.189)~(0.189)	0.8~2.4 (0.03)~(0.09)	3		
GTP-110MA							2		
GTP-130I	130 (5.12)	3.2 (0.13)	28 (1.10)	13.6 (30)	4.0 (0.157)	1.0~2.0	3		
GTP-150I	150 (5.91)	3.6 (0.14)	32 (1.26)	13.6 (30)	5.2 (0.205)	1.0~2.8	1		
GTP-200ST	200 (7.87)	4.8 (0.19)	46 (1.81)	22.2 (50)	6.3 (0.248)	3.6 (0.141)	1		
Releasable Cable Tie									
GTRP-130I	130 (5.12)	3.2 (0.13)	28 (1.10)	13.6 (30)			3		1000



**TY-WRAP**

**YJ-150**

MATERIAL:NYLON 66(UL)  
 FLAME CLASS:94V-2  
 COLOR:NATURAL/BLACK  
 UNIT:mm

RELEASABLE TIES:



PART NO	APPROX LENGTH mm(in)	APPROX WIDTH mm(in)	MAX BUNDLE mm(in)	MIN. LOOP TENSILE STRENGTH kgs.(lbs.)	PACKAGE
YJ-150	150(5.90")	7.5(0.295")	39(1.54")	23(50)	100pcs
YJ-200	200(7.87")		56(2.21")		1000pcs
YJ-250	250(9.84")		72(2.83")		



**TY-WRAP**

**YJ-110**

MATERIAL:NYLON 66(UL)  
 FLAME CLASS:94V-2  
 COLOR:NATURAL/BLACK  
 UNIT:mm

CLAMP MOUNTING TIES:

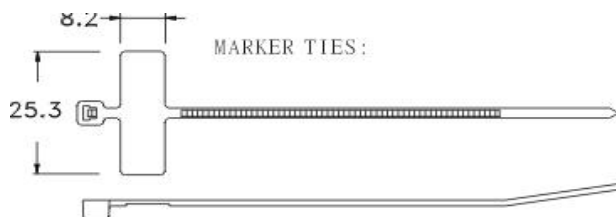


PART NO	APPROX LENGTH mm(in)	APPROX WIDTH mm(in)	D	MAX BUNDLE mm(in)	MIN. LOOP TENSILE STRENGTH kgs.(lbs.)	PACKAGE
YJ-110	110(4.33")	2.8(0.11")	3.2	23(0.91")	10(22)	500pcs
YJ-156	156(6.14")	3.6(0.14")	4.2	35(1.38")	18(40)	1000pcs
YJ-205	205(8.00")	4.8(0.19")	5.4	51(2.01")	23(50)	
YJ-255	255(10.00")			67(2.64")		
YJ-304	304(12.00")			83(3.98")		
YJ-356	356(14.00")			101(3.98")		
YJ-406	406(16.00")			118(4.64")		
YJ-230	230(9.00")	7.6(0.30")	6.4	58(2.28")	54(120)	100pcs
YJ-306	306(12.00")			84(3.31")		
YJ-381	381(15.00")			108(4.25")		
YJ-460	460(18.00")			133(5.24")		
YJ-535	535(21.00")			155(6.10")		

**TY-WRAP LABEL**

**YJ-98X**

MATERIAL:NYLON 66(UL)  
 FLAME CLASS:94V-2  
 COLOR:NATURAL/BLACK  
 UNIT:mm

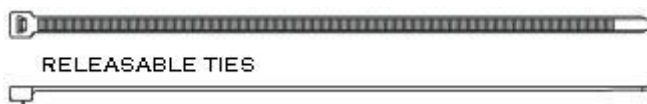


PART NO	APPROX LENGTH mm(in)	APPROX WIDTH mm(in)	MAX BUNDLE mm(in)	MIN. LOOP TENSILE STRENGTH kgs. (lbs.)	PACKAGE
YJ-98X	100(4.00")	2.5(0.10")	22.(0.87")	8(18)	1000pcs

**TY-WRAP**

**YJ-300**

MATERIAL:NYLON 66(UL)  
 FLAME CLASS:94V-2  
 COLOR:NATURAL/BLACK  
 UNIT:mm



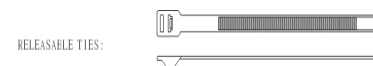
PART NO	APPROX LENGTH mm(in)	APPROX WIDTH mm(in)	MAX BUNDLE mm(in)	MIN. LOOP TENSILE STRENGTH kgs. (lbs.)	PACKAGE
YJ-300	300(11.81")	7.6(0.30")	86(3.38")	23(50)	100pc s
YJ-350	350(13.87")		102(4.02")		
YJ-400	400(15.75")		118(4.65")		
YJ-R655	655(25.79")	9.0(0.35")	194(7.64")	80(175)	
YJ-R780	780(30.71")		234(9.21")		
YJ-R815	815(32.00")		247(9.72")		

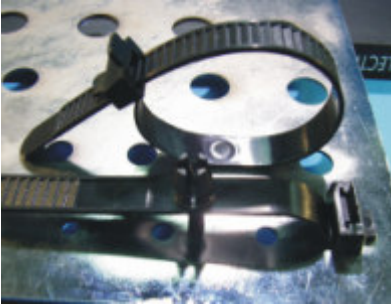
**TY-WRAP**

**YJ-228**

MATERIAL:NYLON 66(UL)  
 FLAME CLASS:94V-2  
 COLOR:NATURAL/BLACK  
 UNIT:mm

PART NO	APPROX LENGTH mm(in)	APPROX WIDTH mm(in)	MAX BUNDLE mm(in)
YJ-228	228(9.00")	12.7(0.50")	54(2.12")
YJ-256	256(10.00")		62(2.44")
YJ-279	279(11.00")		70(2.75")
YJ-305	305(12.00")		78(3.07")
YJ-328	328(13.00")		86(3.38")
YJ-355	355(14.00")		94(3.70")
YJ-380	380(15.00")		102(4.00")
YJ-405	405(16.00")		110(4.33")
YJ-430	430(17.00")		118(4.64")
YJ-455	455(18.00")		127(5.00")
YJ-485	485(19.00")		135(5.31")
YJ-510	510(20.00")		143(5.62")
YJ-534	534(21.00")		151(5.94")
YJ-560	560(22.00")		159(6.25")
YJ-585	585(23.00")		167(6.57")
YJ-610	610(24.00")		175(6.88")
YJ-635	635(25.00")		183(7.20")
YJ-660	660(26.00")		191(7.51")
YJ-685	685(27.00")		199(7.83")
YJ-710	710(28.00")		207(8.14")
YJ-735	735(29.00")		215(8.46")
YJ-760	760(30.00")		224(8.81")
YJ-790	790(31.00")		232(9.19")
YJ-813	813(32.00")		243(9.57")
YJ-915	915(36.00")		274(10.79")
YJ-1042	1042(41.00")		314(12.36")

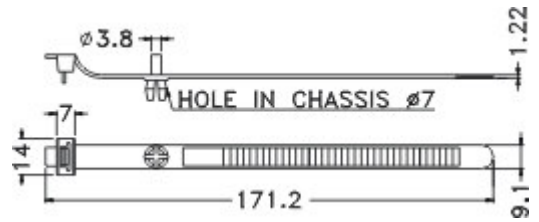




**RELEASE — TY-WRAP WITH LOCK**

STC-171

MATERIAL:NYLON 66(UL)  
 FLAME CLASS:94V-2  
 COLOR:BLACK  
 UNIT:mm



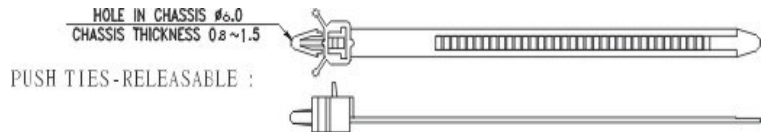
PARTNO	PACKAGE
STC-171	100



**RELEASE — TY-WRAP WITH FIXING**

YJ-151

MATERIAL:NYLON 66(UL)  
 FLAME CLASS:94V-2  
 COLOR:NATURAL  
 UNIT:mm



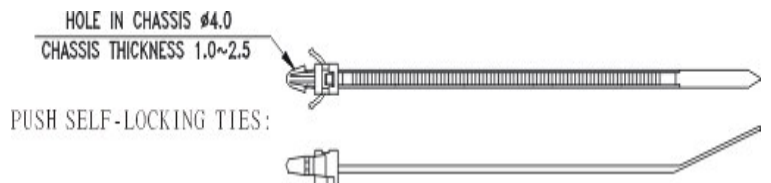
PART NO	APPROX LENGTH mm(in)	APPROX WIDTH mm(in)	MAX BUNDLE mm(in)	MIN. LOOP TENSILE STRENGTH kgs.(lbs.)	PACKAGE
YJ-151	151(6.00")	7.8(0.30")	37(1.45")	40(88)	100pcs
YJ-191	191(7.50")		49(1.92")		
YJ-231	231(9.00")		62(2.44")		



**RELEASE — TY-WRAP WITH FIXING**

YJ-123

MATERIAL:NYLON 66(UL)  
 FLAME CLASS:94V-2



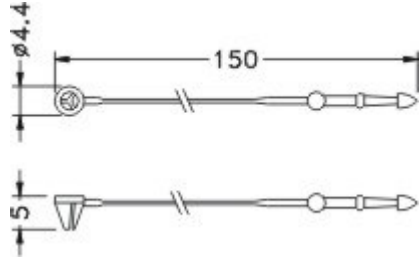
PART NO	APPROX LENGTH mm(in)	APPROX WIDTH mm(in)	MAX BUNDLE mm(in)	MIN. LOOP TENSILE STRENGTH kgs.(lbs.)	PACKAGE
YJ-123	123(4.84")	3.4(0.13")	25.4(1.00")	18.(40)	500pcs



**CABLE TY**

**LOCK-150**

MATERIAL:NYLON 66(UL)  
 FLAME CLASS:94V-2  
 COLOR:NATURAL  
 UNIT:mm

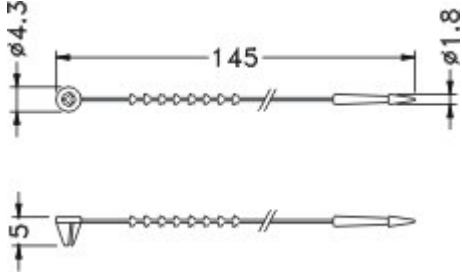


PARTNO
LOCK-150

**CABLE TY**

**LOCK-145**

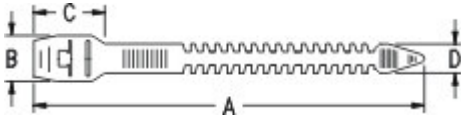
MATERIAL:NYLON 66(UL)  
 FLAME CLASS:94V-2  
 COLOR:NATURAL  
 UNIT:mm



**CABLE TY**

**ST-2**

MATERIAL:P.E  
 COLOR:NATURAL  
 UNIT:mm



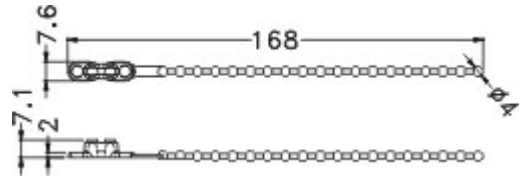
PARTNO	A	B	C	D	PACKAGE
ST-2	135.0	15.8	21.4	10.0	500
ST-3	140.0	15.4	24.5	10.0	





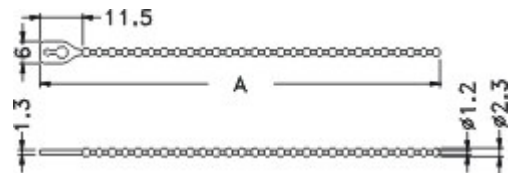
**CABLE TY**  
**STO-166**  
 MATERIAL:P.E  
 COLOR:NATURAL  
 UNIT:mm

PARTNO	PACKAGE
STO-166	500



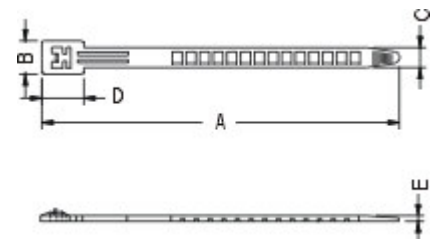
**CABLE TY**  
**GTB**  
 MATERIAL:NYLON 66(UL)  
 FLAME CLASS:94V-2/94V-0  
 COLOR:NATURAL  
 UNIT:mm

PART NO.	A	PACKAGE
★GTB-70	70.0	1000
GTB-100	110.0	



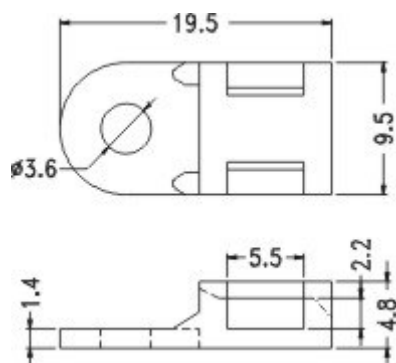
**CABLE TY**  
**ST-1**  
 MATERIAL:P.E  
 COLOR:NATURAL  
 UNIT:mm

PART NO.	A	B	C	D	E	PACKAGE
ST-1	157	14.7	8.6	18.3	1.5	500
ST-4	205	15.0	8.6	18.3	1.7	
ST-5	125	13.0	7.5	16.0	1.45	



**CABLE TY HOLDER****TH-3**

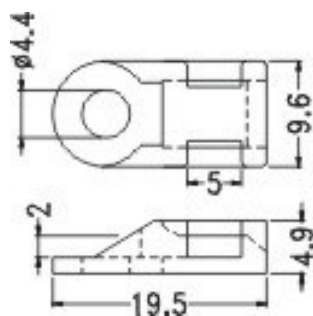
MATERIAL:NYLON(UL)  
 FLAME CLASS:94V-2  
 COLOR:NATURAL  
 UNIT:mm



PARTNO	PACKAGE
TH-3	1000

**CABLE TY HOLDER****TH-1**

MATERIAL:NYLON(UL)  
 FLAME CLASS:94V-2  
 COLOR:NATURAL  
 UNIT:mm



PARTNO	PACKAGE
TH-1	1000