



CATALOGUS: FREROX

PLASTIC PARTS FOR ELECTRICAL EQUIPMENT

FREROX ELECTRONICS

9

THERMAL CONNECTION

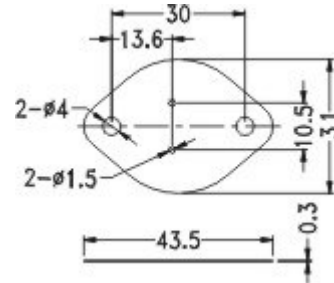
MATERIALS



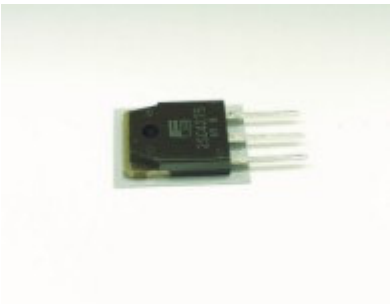
THERMAL PAD

TO-3

MATERIAL:SILICON(UL)
 FLAME CLASS:94V-0
 COLOR:GRAY
 UNIT:mm



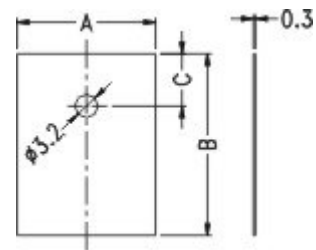
PARTNO	PACKAGE
TO-3	1000



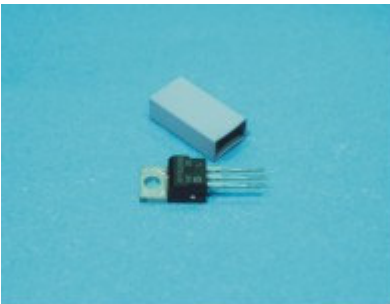
THERMAL PAD

TO-3P

MATERIAL:SILICON(UL)
 FLAME CLASS:94V-0
 COLOR:GRAY
 UNIT:mm



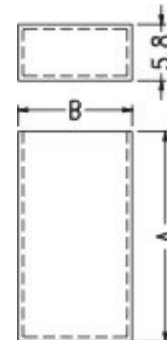
PARTNO	A	B	C	PACKAGE
TO-3P	19.0	25.0	7.2	1000
TO-220	13.2	19.0	5.0	



THERMAL PAD

TO

MATERIAL:SILICON(UL)
 FLAME CLASS:94V-0
 COLOR:GRAY
 UNIT:mm

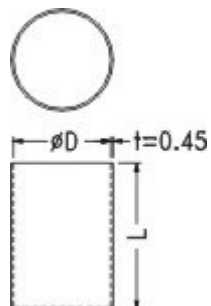


PART NO	A	B	THICKNESS	PACKAGE
TO-3PCV	28.5	17.5	0.45	1000
TO-3PCV-A	25.0	18.5		
TO-220CV	21.7	11.5		

THERMAL PAD

SCT

MATERIAL:SILICON(UL)
 FLAME CLASS:94V-0
 COLOR:GRAY
 UNIT:mm

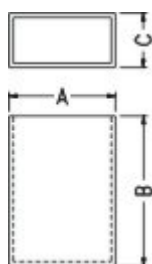


PART NO	D	L	PACKAGE
SCT-0726	7.8	26.0	500
SCT-1615	16.7	15.0	
SCT-1925	18.7	25.0	

THERMAL PAD

SRT

MATERIAL:SILICON(UL)
 FLAME CLASS:94V-0
 COLOR:GRAY
 UNIT:mm



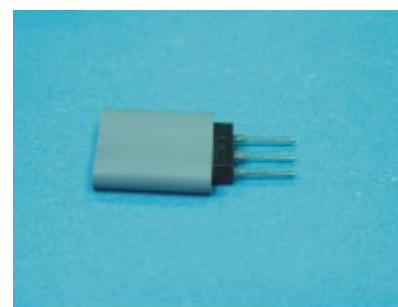
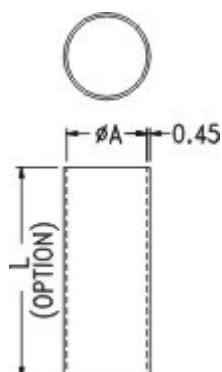
PARTNO	A	B	C	THICKNESS	PACKAGE
SRT-111758	11.4	16.0	5.8	0.45	500
SRT-182864	18.0	28.5	6.4	0.75	
SRT-203464	20.0	35.0	6.4	0.75	

THERMAL PAD

SRT-H

MATERIAL:SILICON(UL)
 FLAME CLASS:94V-0
 COLOR:GRAY
 UNIT:mm

PART NO	A
SRT6	6.0
SRT8	8.0
SRT10	10.0
SRT12	12.0
SRT14	14.0
SRT16	16.0
SRT18	18.0
SRT20	20.0

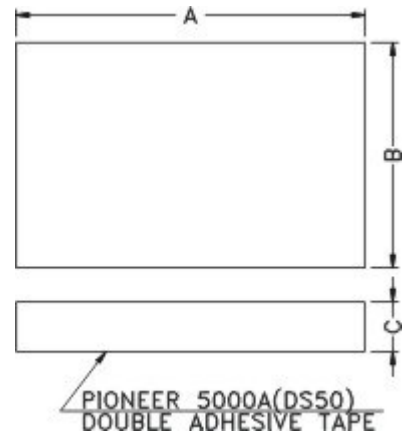




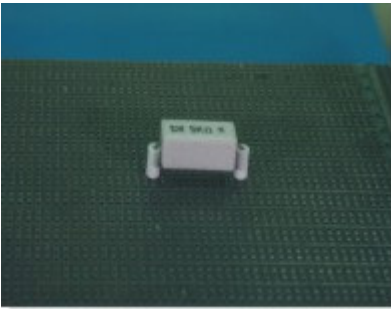
HEAT CONDUCTOR

CPU140920A

MATERIAL: SILICON(UL)
 FLAME CLASS : 94V-0
 COLOR: GRAY
 UNIT: mm
 THICKNESS : 0.3~4.0 mm



PART NO.	A	B	C
CPU140920A	14	9.0	2.0

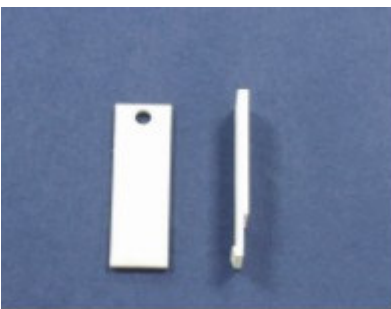
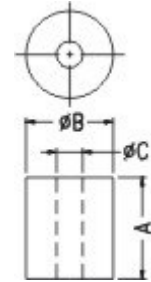


COMPONENT ISOLATOR

PW

MATERIAL: P.B.T(UL)
 FLAME CLASS: 94V-0
 COLOR: NATURAL
 UNIT: mm

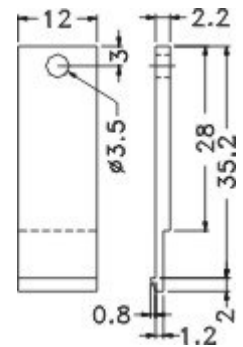
PART NO	A	B	C	PACKAGE
PW-1	4.2	4.0	1.3	2000
PW-1A	4.2	4.5	1.8	
PW-2	8.0	4.0	1.3	1000
PW-3	3.0	4.0	1.3	2000
PW-4	3.6	3.5	1.3	
PW-5	2.0	5.0	2.0	
PW-6	2.5	3.2	1.4	



TRANSISTOR ISOLATOR

TCP-1

MATERIAL: PBT(UL)
 FLAME CLASS: 94V-0
 COLOR: NATURAL
 UNIT: mm



PARTNO	PACKAGE
TCP-1	1000

TRANSISTOR ISOLATOR

TW

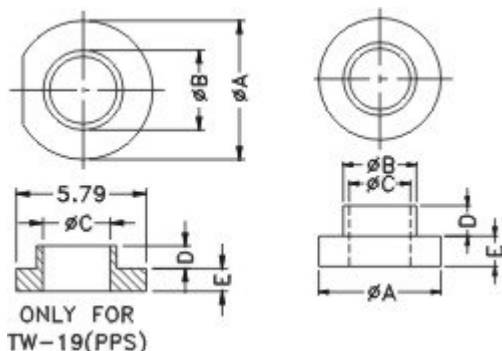
" # " = MATERIAL: P.B.T V-0 or N66 V-2 AVAILABLE

" * " = MATERIAL: N66 V-2 AVAILABLE ONLY

OTHRITEMS = MATERIAL: P.B.T, N46, PPS, N66V-0, N66V-2 AVAILABLE

COLOR: NATURAL

UNIT: mm



PART NO.	A	B	C	D	E		PACKAGE
TW-1	6.0	3.6	3.0	1.5	1.5	TO-220	2000
TW-2	6.2	3.5	3.0	3.0	1.5		
TW-3	6.2	3.5	3.0	2.5	2.0		
TW-4	6.0	3.5	3.0	2.0	2.0		
TW-5	6.2	3.5	2.9	1.2	1.0		
TW-6	6.2	3.5	2.9	1.4	1.2		
TW-7	8.0	3.8	3.1	2.8	1.2		
#TW-8	8.0	3.8	3.1	1.2	1.2	TO-3	1000
TW-9	10.0	6.0	5.0	5.0	1.0	WASHERS	
TW-10	10.0	5.0	4.0	4.0	1.0		
TW-11	9.5	6.3	4.5	1.2	1.2		
TW-12	9.5	6.3	4.1	0.8	1.7		
TW-14	9.9	8.3	6.5	1.5	1.0		
TW-15	6.2	3.6	3.0	2.4	1.9		
TW-16	6.1	3.5	2.9	1.6	1.4		TO-220
TW-17	6.1	3.55	3.0	1.5	2.0		
TW-18	6.35	5.15	3.5	1.6	0.6	WASHERS	
TW-19	6.22	3.56	3.02	1.02	1.02		
TW-20	6.5	3.5	2.95	4.0	0.9		
TW-21	7.0	5.0	3.0	5.8	2.0		
TW-22	11.9	7.9	4.0	3.0	2.6		
TW-23	7.1	5.0	3.0	2.3	2.0		
TW-24	6.4	3.55	3.0	2.0	1.3		
TW-25	7.92	4.83	3.05	0.8	1.14		
TW-26	6.0	3.7	3.0	5.2	1.0		
TW-27	6.0	3.55	2.95	1.4	1.4		
TW-29	14.0	7.5	6.0	1.8	1.2		
TW-30	14.0	9.8	6.6	1.7	0.9		
TW-31	16.0	11.4	10.0	0.8	0.7		
TW-33	6.0	3.5	2.5	7.2	5.0		
TW-34	6.0	3.5	2.5	11.0	5.0		
TW-35	6.0	3.55	2.95	1.2	1.3		
TW-36	15.7	9.7	4.5	6.5	5.0		
TW-37	6.0	3.55	2.95	3.2	2.0		
TW-38	6.1	3.55	3.0	1.5	1.1		
★ TW-39	5.46	3.43	2.95	0.81	1.02		
★ TW-41	6.6	4.95	2.6	6.0	1.5		
★ TW-42	6.35	4.78	3.94	1.57	3.18		
★ TW-43	25.4	11.0	8.3	2.29	1.58		
★ TW-48	11.0	8.0	5.5	8.0	1.3		
★ TW-49	6.4	3.53	3.0	2.0	1.2		
★ TW-53	11.8	6.0	4.0	1.9	0.5		
★ TW-57	10.0	4.2	3.45	3.0	1.0		
★ TW-58	6.2	3.5	3.0	2.5	2.7		