

CATALOGUS: FREROX

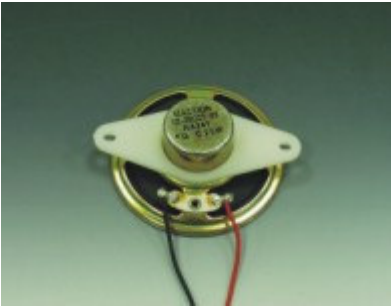
PLASTIC PARTS FOR ELECTRICAL EQUIPMENT

FREROX ELECTRONICS

5

TRANSISTOR AND COMPONENT

MOUNTINGS

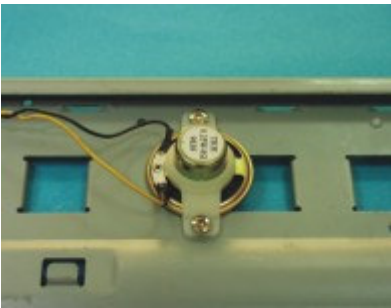


SPEAKER HOLDER

SPK-1

MATERIAL:NYLON 66(UL)
 FLAME CLASS:94V-2
 COLOR:NATURAL
 UNIT:mm

PARTNO	PACKAGE
SPK-1	250



SPEAKER HOLDER

SPK-2

MATERIAL:NYLON 66(UL)
 FLAME CLASS:94V-2
 COLOR:NATURAL
 UNIT:mm

PARTNO	PACKAGE
SPK-2	250

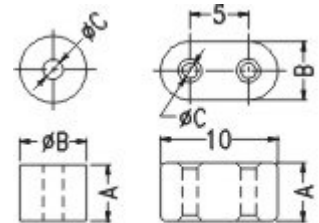


CERAMIC COMPONENT SPACER

CHS

MATERIAL:CERAMIC
 COLOR:WHITE
 UNIT:mm

PART NO	A	B	C	PACKAGE
CHS-1	4.5	3.8	1.0	2000
CHS-2	9.0	3.8	1.0	
CHS-3	3.0	4.5	1.8	
CHS-4	4.5	4.5	1.8	
CHS-5	9.0	4.5	1.8	
CHS-6	5.0	5.0	1.3	
CHS-7	6.9	2.6	0.9	
CHS-8	3.1	2.5	1.1	
CHS-9	15.4	4.1	1.9	

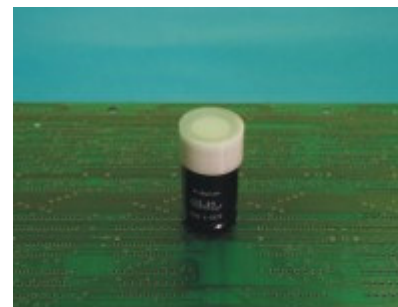
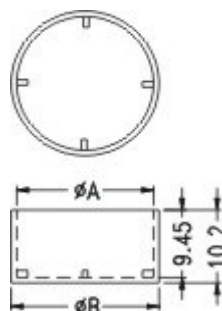


ONLY FOR CHS-6

CONNECTOR COVER

BCC

MATERIAL: NYLON(UL)
 FLAME CLASS: 94V-2
 COLOR: NATURAL
 UNIT: mm

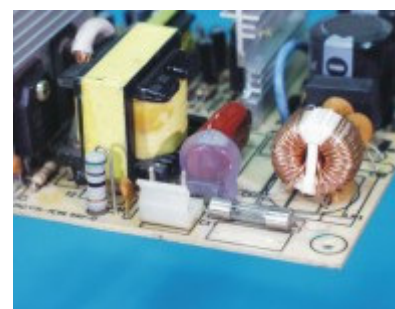
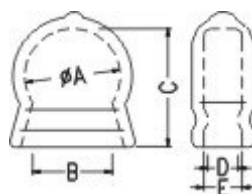


PART NO	A	B	PACKAGE
BCC-16	16.7	18.2	500
BCC-18	18.7	20.2	

FUSE COVER

HU

MATERIAL: SOFT P.V.C
 COLOR: NATURAL/BLUE
 UNIT: mm



PART NO	A	B	C	D	E	MATERIAL	COLOR
HU-8	8.5	7.5	10.0	3.0	3.0	SOFT P.V.C	NATURAL
HU-8(BU)	8.5	7.5	10.0	3.0	3.0	SOFT P.V.C	
HU-12	12.0	10.0	15.0	3.8	4.8	SOFT P.V.C	NATURAL
HU-12(BU)	12.0	10.0	15.0	3.8	4.8	SOFT P.V.C	

FUSE COVER

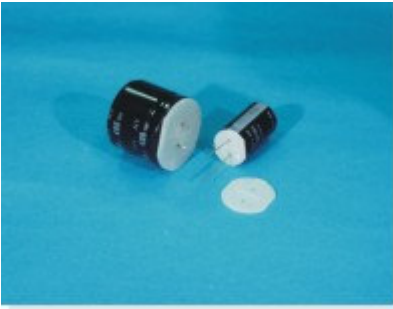
HU-10

MATERIAL: SOFT P.V.C
 COLOR: NATURAL/BLUE
 UNIT: mm



PARTNO	PACKAGE
HU-10	1000

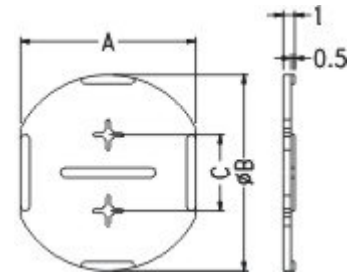




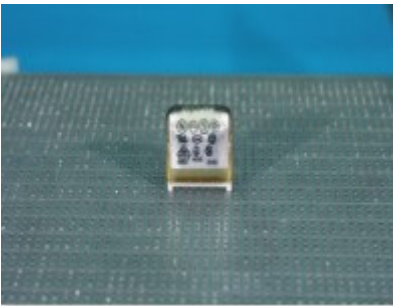
ECCO SPACER

CW

MATERIAL:NYLON66(UL)
 FLAME CLASS:94V-2
 COLOR:NATURAL
 UNIT:mm



PART NO	A	B	C	PACKAGE
CW-16	14.6	16.2	7.5	1000
CW-18	16.4	18.2	7.5	
CW-22	20.0	22.2	10.0	
CW-25	23.0	25.7	10.0	500
CW-30	27.2	30.3	10.0	
CW-35	31.8	35.3	10.0	

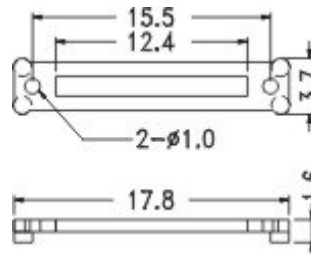


COMPONENT SPACER

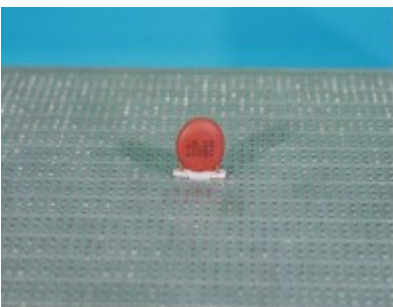
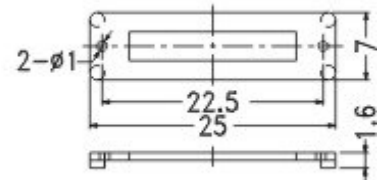
CWL-15

MATERIAL:NYLON 66(UL)
 FLAME CLASS:94V-2
 COLOR:NATURAL
 UNIT:mm

PARTNO	PACKAGE
CWL-15	1000



PART NO	PACKAGE
★ CWL-22	1000

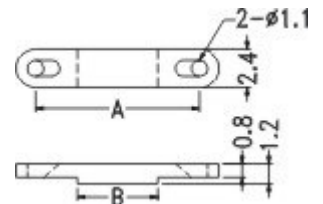


CHRYSTAL SPACER

CWT

MATERIAL:NYLON 66(UL)
 FLAME CLASS:94V-2
 COLOR:NATURAL
 UNIT:mm

PART NO	A	B	PACKAGE
CWT-8	7.6	4.0	2000
CWT-10	10.1	5.0	



COMPONENT COVER

HU-16

MATERIAL:SOFT P.V.C
 COLOR:NATURAL/BLUE
 UNIT:mm)



PARTNO	PACKAGE
HU-16	1000

COMPONENT COVER

HU-14

MATERIAL:SOFT P.V.C
 COLOR:NATURAL/BLUE
 UNIT:mm



PARTNO	PACKAGE
HU-14	1000

ECCO SPACER

CW-1

MATERIAL:NYLON66(UL)
 FLAME CLASS:94V-2
 COLOR:NATURAL
 UNIT:mm



PARTNO	PACKAGE
CW-1	500



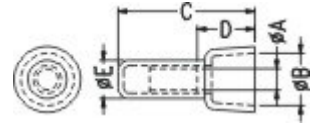


WIRE TWISTER—LOW VOLTAGE

C

HOUSING MAT'L: NYLON 66 UL94V-2
METAL MAT'L: TIN PLATED COPPER

COLOR: NATURAL
UNIT: mm



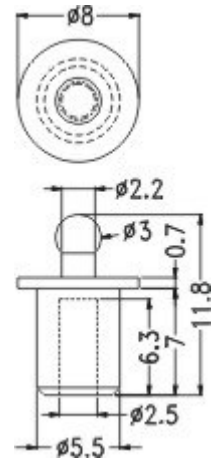
PART NO	WIRE RANGE	A	B	C	D	E	PACKAGE
C3	#22-16 1.25mm	2.5	7.9	19.2	7.2	5.1	1000
C4	#16-14 2mm	3.2	8.2	20.7	8.5	5.7	
C5	#12-10 5.5mm	4.2	10.6	24.8	10.7	7.3	
C8	#8 8mm	5.0	12.2	27.1	12.5	9.2	500



CONNECTOR COVER

JKCV-1

MATERIAL: RUBBER
COLOR: BLACK
UNIT: mm



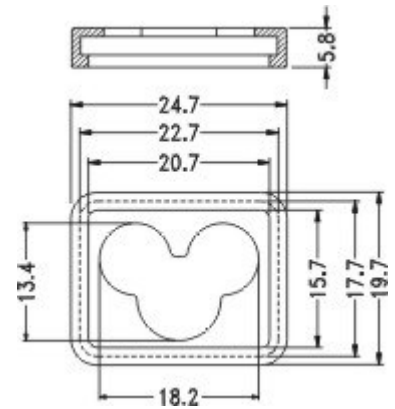
PARTNO	PACKAGE
JKCV-1	1000



CONNECTOR COVER

ABSC-2318

MATERIAL: PVC
COLOR: TRANSPARENT
UNIT: mm

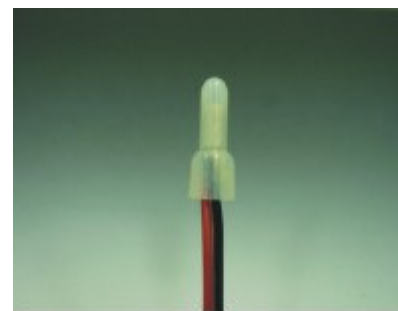


PARTNO	PACKAGE
ABSC-2318	1000

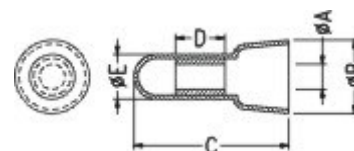
CABLE TWISTER—LOW VOLTAGE

CE

MATERIAL:
 HOUSING MAT'L:NYLON 66 UL94V-2
 METAL MAT'L:TIN PLATED COPPER
 COLOR:NATURAL
 UNIT:mm



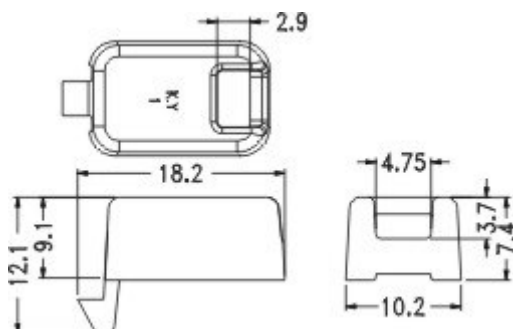
PART NO	WIRE RANGE	A	B	C	D	E	PACKAGE
CE1	#22-16 1.25mm	2.5	7.7	18.0	7.0	5.0	1000
CE2	#16-14 2mm	3.2	9.5	20.0	7.0	5.7	
CE5	#12-10 5.5mm	4.0	12.3	25.5	8.4	7.6	
CE8	#8 8mm	5.2	14.2	27.7	8.5	9.5	500



COVER

CVER-1

MATERIAL:PC UL94V-2
 COLOR:CLEAR
 UNIT:mm

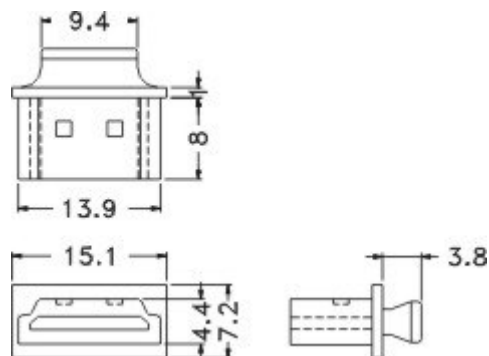
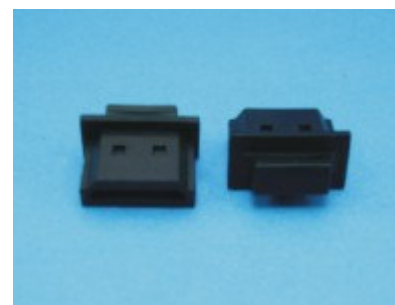


PARTNO	PACKAGE
CVER-1	1000

CONNECTOR - INSERT COVER

HDMIC-1

MATERIAL:PE
 COLOR:BLACK
 UNIT:mm



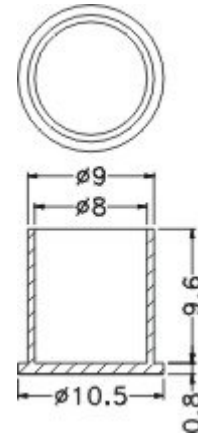
PARTNO	PACKAGE
HDMIC-1	1000



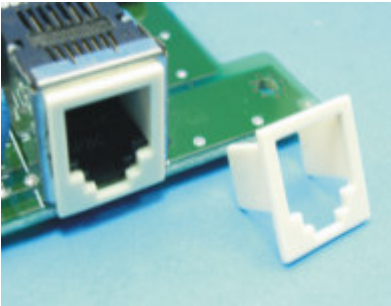
CONNECTOR COVER

SVD0C-1

MATERIAL:PP
 COLOR:NATURAL
 UNIT:mm



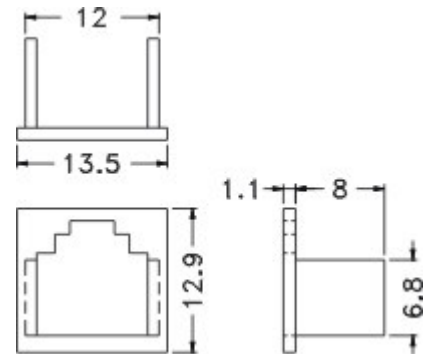
PARTNO	PACKAGE
SVD0C-1	1000



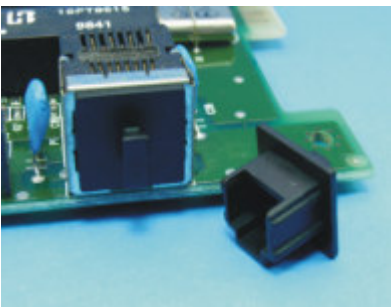
CONNECTOR COVER

ASID-1

MATERIAL:ABS
 COLOR:IVORY
 UNIT:mm



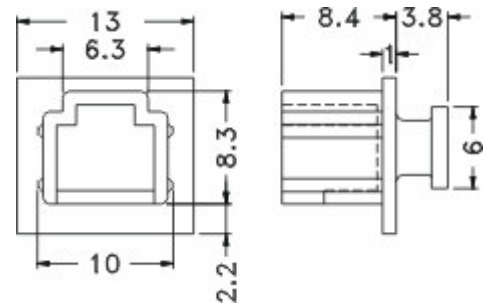
PARTNO	PACKAGE
ASID-1	1000



CONNECTOR COVER

CRJ-11-2S

MATERIAL:PE
 COLOR:BLACK
 UNIT:mm



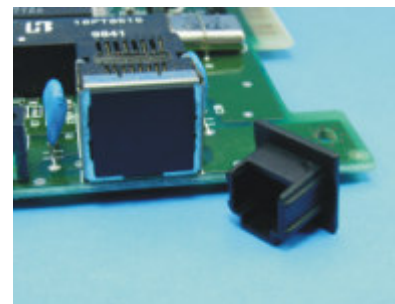
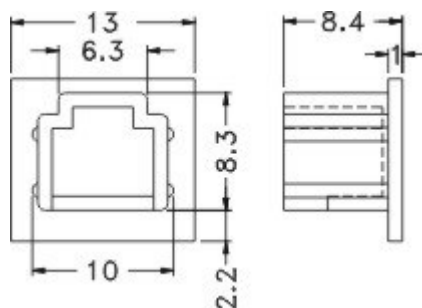
PARTNO	PACKAGE
CRJ-11-2S	1000



CONNECTOR COVER

CRJ-11-2

MATERIAL:PE
 COLOR:BLACK
 UNIT:mm

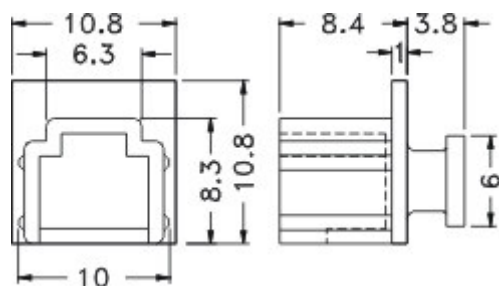


PARTNO	PACKAGE
CRJ-11-2	1000

CONNECTOR COVER

CRJ-11s

MATERIAL:PE
 COLOR:BLACK
 UNIT:mm

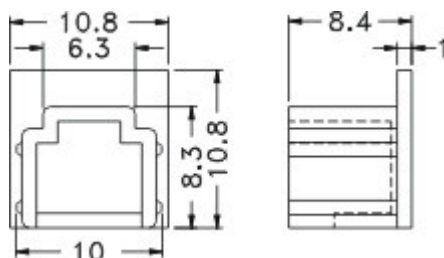


PARTNO	PACKAGE
CRJ-11S	1000

CONNECTOR COVER

CRJ-11

MATERIAL:PE
 COLOR:BLACK
 UNIT:mm



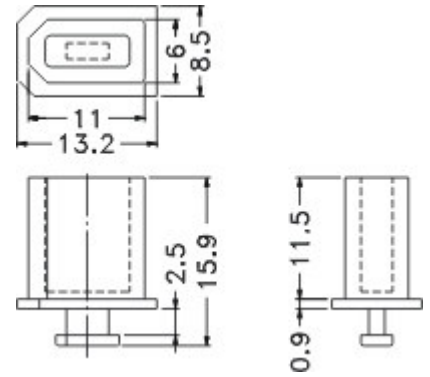
PARTNO	PACKAGE
CRJ-11	1000



USB-COVER

CVR-1394S

MATERIAL:PE
 COLOR:DARK GRAY
 UNIT:mm



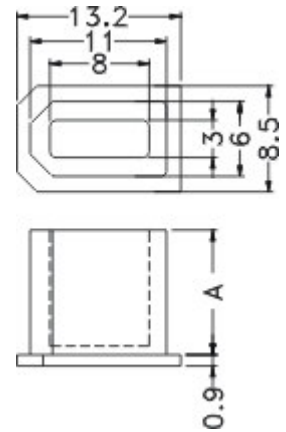
PARTNO	PACKAGE
CVR-1394S	1000



USB-COVER

CVR

MATERIAL:PE
 COLOR:BLACK
 UNIT:mm



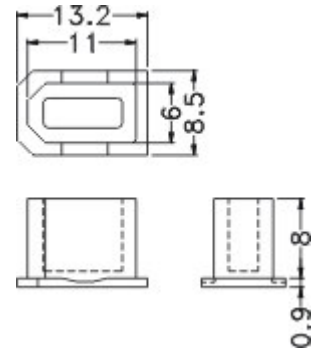
PART NO.	A	PACKAGE
CVR-1394-2	10.0	1000
CVR-1394-3	11.5	



USB-COVER

CVR-1394

MATERIAL:PE
 COLOR:DARK GRAY
 UNIT:mm

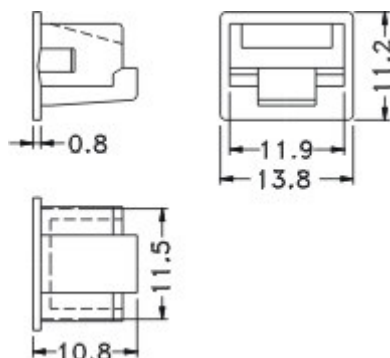


PARTNO	PACKAGE
CVR-1394	1000

CONNECTOR COVER

PJS-45

MATERIAL:ABS(UL)
 COLOR:BLACK
 UNIT:mm

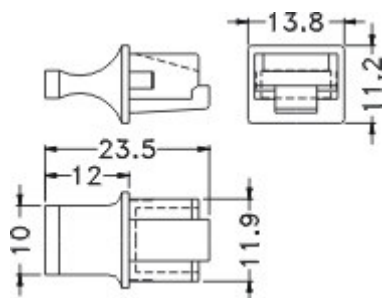


PARTNO	PACKAGE
PJS-45	500

CONNECTOR COVER

PJC-45

MATERIAL:ABS(UL)
 COLOR:BLACK
 UNIT:mm

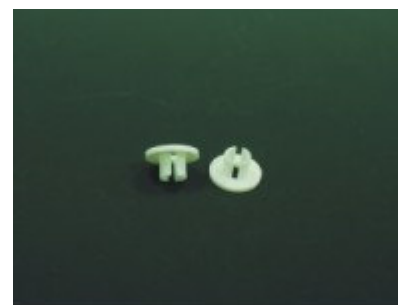
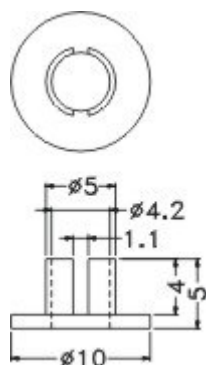


PARTNO	PACKAGE
PJC-45	500

WASHER

TWU-1

MATERIAL:NYLON66(UL)
 FLAME CLASS:94V-0
 COLOR:NATURAL
 UNIT:mm



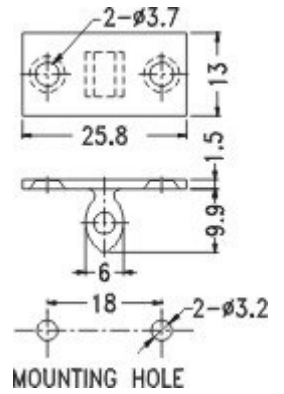
PARTNO	PACKAGE
TWU-1	2000



PUSH-LOCKER

DTA-42

MATERIAL: NYLON 66(UL)
 FLAME CLASS: 94V-2
 COLOR: NATURAL
 UNIT: mm



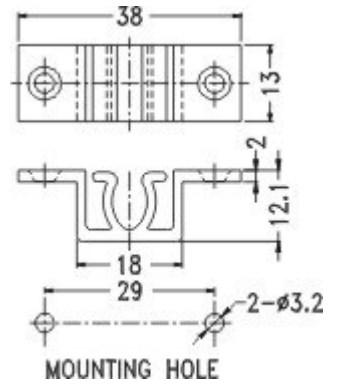
PARTNO	PACKAGE
DTA-42	500



PUSH-LOCKER

DT-42

MATERIAL: POM
 COLOR: NATURAL
 UNIT: mm



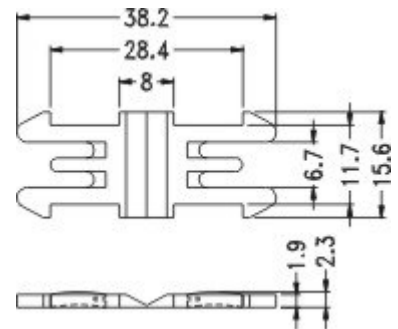
PARTNO	PACKAGE
DT-42	500



LOCKER-CLIP

DT-11

MATERIAL: NYLON 66(UL)
 FLAME CLASS: 94V-2
 COLOR: BLACK
 UNIT: mm

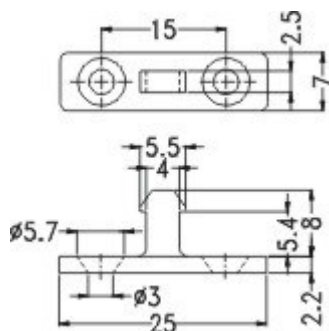


PARTNO	PACKAGE
DT-11	500

DOOR LOCK

DTA-1

MATERIAL:ABS(UL)
 FLAME CLASS:94HB
 COLOR:BLACK
 UNIT:mm

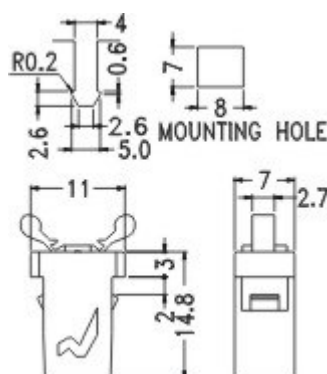


PARTNO	PACKAGE
DTA-1	500

PUSH LOCKER

DT-4

CATCHER MAT'L:NYLON 66(UL)94V-2
 CASE MAT'L:POM
 COLOR:BLACK
 UNIT:mm

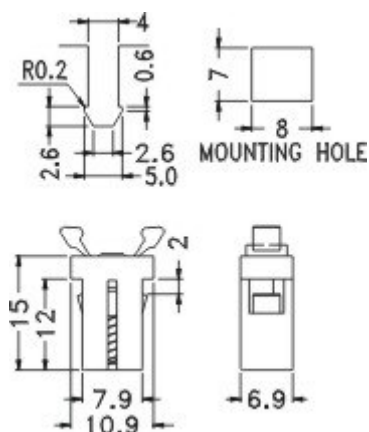


PARTNO	PACKAGE
DT-4	500

PUSH LOCKER

DT-1

CATCHER MAT'L:NYLON 66(UL)94V-2
 CASE MAT'L:ABS
 COLOR:BLACK/GRAY
 UNIT:mm



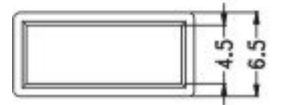
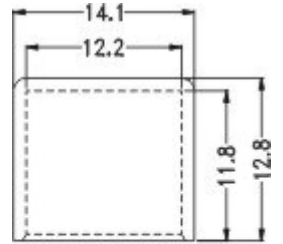
PARTNO	PACKAGE
DT-1	500



USB-COVER

KPS-6

MATERIAL:PE
 COLOR:NATURAL
 UNIT:mm



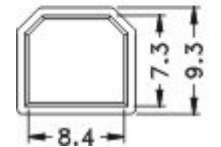
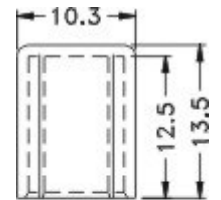
PARTNO	PACKAGE
KPS-6	1000



USB-COVER

KPS-5

MATERIAL:PE
 COLOR:NATURAL
 UNIT:mm



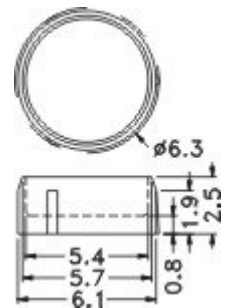
PARTNO	PACKAGE
KPS-5	1000



CONNECTOR COVER

CAPX-6

MATERIAL:NYLON 66(UL)
 FLAME CLASS:94V-0
 COLOR:BLACK
 UNIT:mm



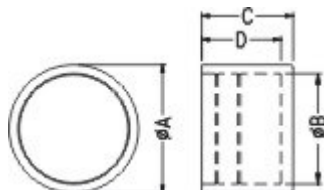
PARTNO	PACKAGE
CAPX-6	2000



CONNECTOR COVER

KPS

MATERIAL:PE
 COLOR:NATURAL
 UNIT:mm

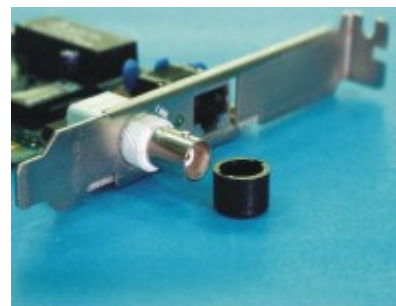
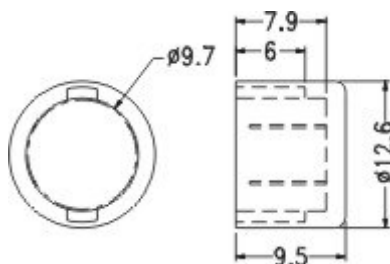


PARTNO	A	B	C	D	PACKAGE
KPS-1	15.8	13.4	11.2	10.0	500
KPS-2	10.7	9.0	9.6	8.6	1000
KPS-3	10.3	8.4	8.0	7.0	

CONNECTOR COVER

BNC-2

MATERIAL:PE
 COLOR:GRAY/BLACK
 UNIT: mm

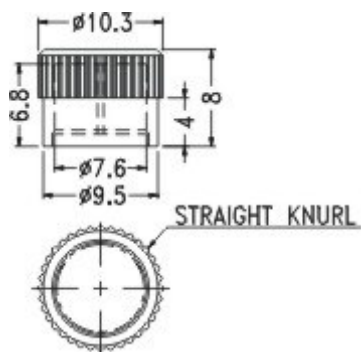


PARTNO	PACKAGE
BNC-2	1000

CONNECTOR COVER

KPS-4

MATERIAL:PE
 COLOR:NATURAL
 UNIT:mm



PARTNO	PACKAGE
KPS-4	1000

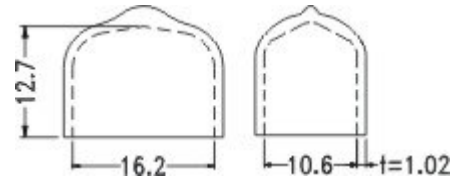




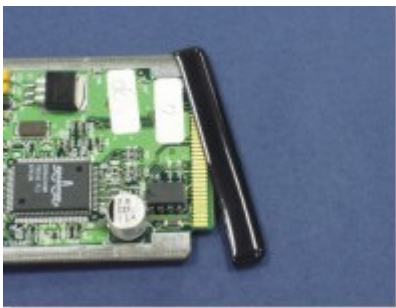
SOFT-COVER

FH-17

MATERIAL:SOFT P.V.C
 COLOR:BLUE
 UNIT:mm



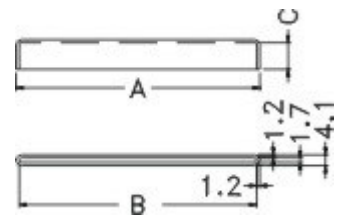
PARTNO	PACKAGE
FH-17	1000



COVER

FUSE

MATERIAL:SOFT P.V.C
 COLOR:BLACK
 UNIT:mm



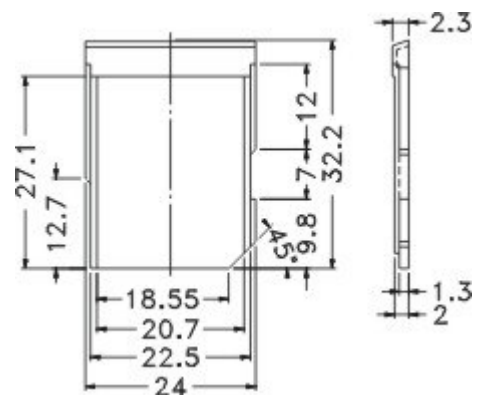
PART NO.	A	B	C	PACKAGE
FUSE-5	65.9	63.5	7.0	1000
★ FUSE-6	91.4	89.0	10.0	



PCIM SLOT COVER

SD-24

MATERIAL:ABS(UL)
 FLAME CLASS:94HB
 COLOR:BLACK
 UNIT:mm

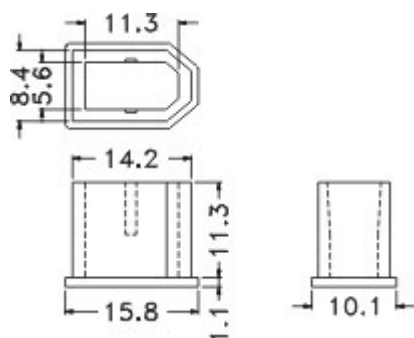


PARTNO	PACKAGE
SD-24	500

USB COVER

CVR-1394-1

MATERIAL:PE
 COLOR:DARK GRAY
 UNIT:mm

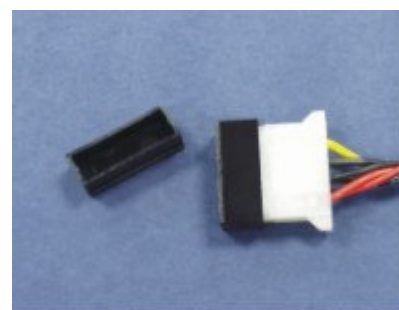
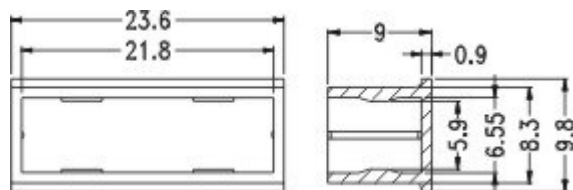


PARTNO	PACKAGE
CVR-1394-1	1000

CONNECTOR COVER

FHC-2

MATERIAL:NYLON 66(UL)
 FLAME CLASS:94V-2
 COLOR:BLACK/NATURAL
 UNIT:mm

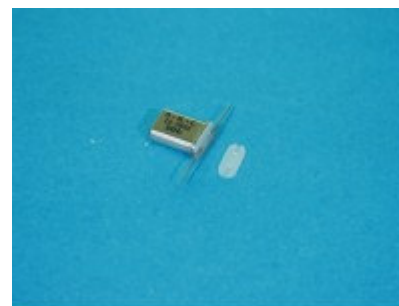
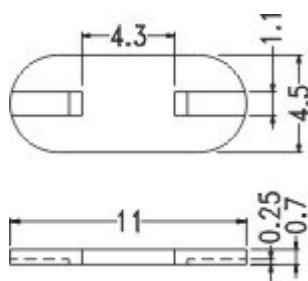


PARTNO	PACKAGE
FHC-2	500

CHRYSTAL SPACER

QW-4

MATERIAL:NYLON 66(UL)
 FLAME CLASS:94V-2
 COLOR:NATURAL
 UNIT:mm



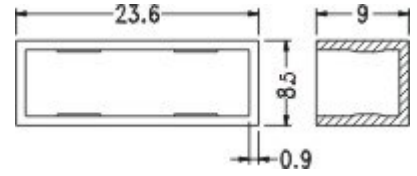
PARTNO	PACKAGE
QW-4	2000



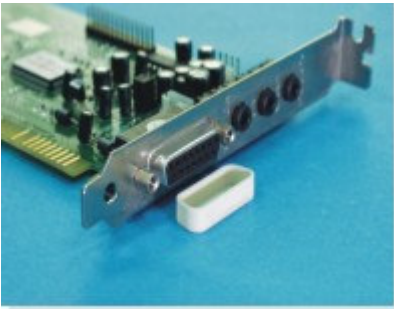
CONNECTOR COVER

FHC-1

MATERIAL: NYLON 66(UL)
 FLAME CLASS: 94V-2
 COLOR: BLACK/NATURAL
 UNIT: mm



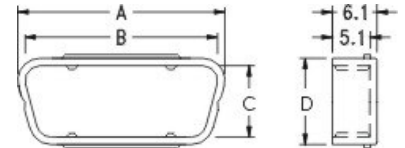
PARTNO	PACKAGE
FHC-1	500



SUB-D COVER

DTC

MATERIAL: PE
 COLOR: COMPUTER/BLACK/NATURAL
 UNIT: mm



PARTNO	A	B	C	D	PACKAGE
DTC-9F	18.5	16.5	7.8	10.2	1000
DTC-15F	26.8	24.8	7.8	10.2	500
DTC-25F	40.6	38.6	7.8	10.2	
DTC-9M	20.0	18.0	9.4	11.8	1000
DTC-15M	28.2	26.4	9.4	11.8	500
DTC-25M	42.0	40.0	9.4	11.8	



SUB-D COVER

DTC

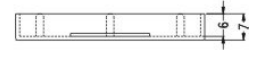
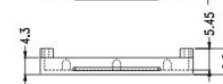
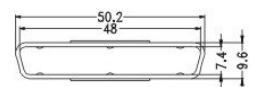
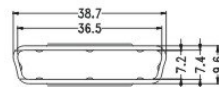
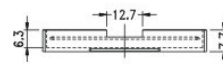
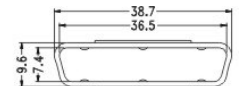
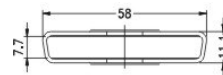
MATERIAL: PE
 COLOR: COMPUTER/BLACK/NATURAL
 UNIT: mm

PARTNO	PACKAGE
DTC-37M	500

PARTNO	PACKAGE
DTC-50M	500

PARTNO	PACKAGE
DTC-50S	500

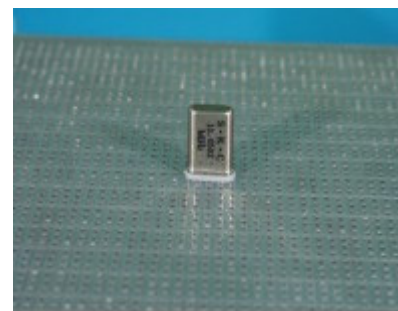
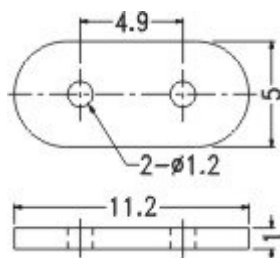
PARTNO	PACKAGE
DTC-68M	500



CHRYSTAL SPACER

QW-3

MATERIAL:NYLON 66(UL)
 FLAME CLASS:94V-2
 COLOR:NATURAL
 UNIT:mm

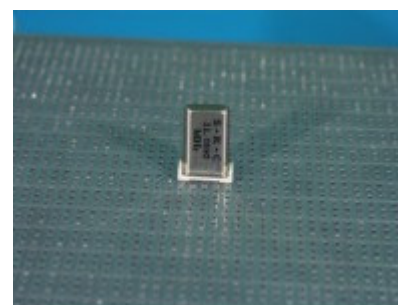
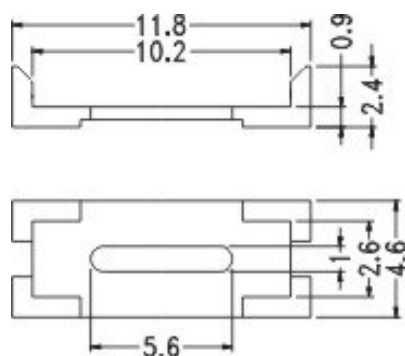


PARTNO	PACKAGE
QW-3	2000

CHRYSTAL HOLDER

QW-2

MATERIAL:NYLON 66(UL)
 FLAME CLASS:94V-0
 COLOR:NATURAL
 UNIT:mm

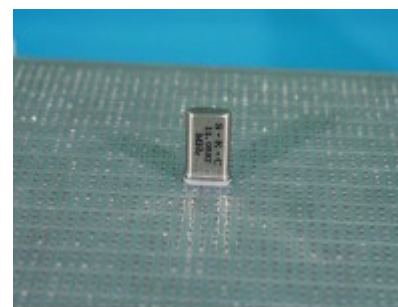
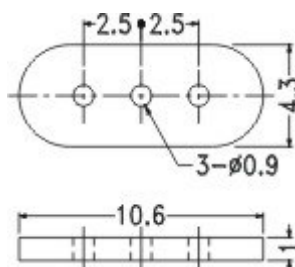


PARTNO	PACKAGE
QW-2	2000

CHRYSTAL HOLDER

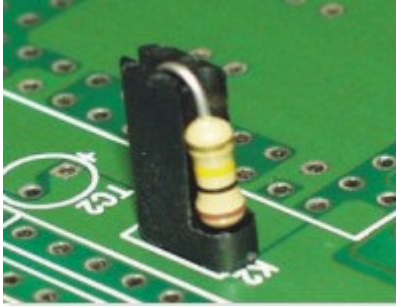
QW-1

MATERIAL:NYLON 66(UL)
 FLAME CLASS:94V-2
 COLOR:NATURAL
 UNIT:mm



PART NO	PACKAGE
QW-1	2000





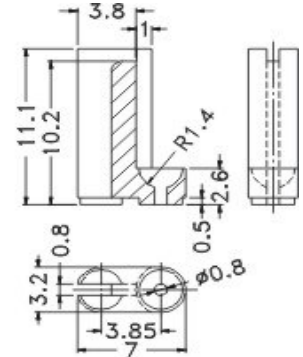
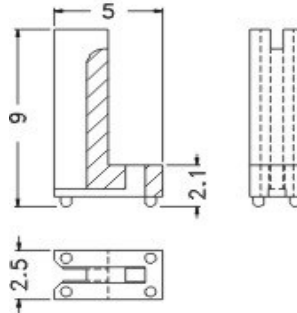
RADIAL HOLDER

RPCL

MATERIAL:PPS(UL)
 FLAME CLASS:94V-0
 COLOR:NATURAL
 UNIT:mm

PARTNO	PACKAGE
RPCL-9	2000

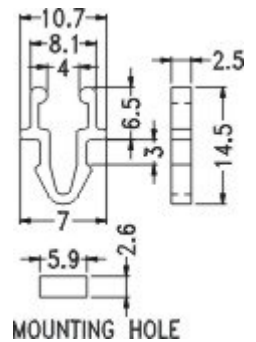
PARTNO	PACKAGE
RPCL-11	2000



LOCKER-CLIP

DT-10

MATERIAL:NYLON 66(UL)
 FLAME CLASS:94V-2
 COLOR:BLACK
 UNIT:mm



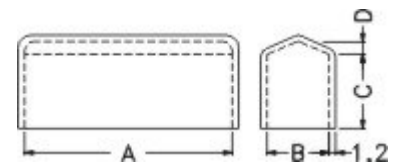
PARTNO	PACKAGE
DT-10	2000



FUSE COVER

FH

MATERIAL:SOFT P.V.C
 UNIT:mm

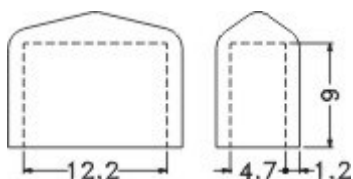


PARTNO.	A	B	C	D	COLOR	PACKAGE
FH-1	20.0	6.0	10.5	1.0	BLUE	1000
FH-1L	22.0	6.0	10.5	1.0		
FH-1S	18.0	5.3	10.0	1.0		
FH-3A	31.0	8.1	11.5	2.0		
FH-3	31.8	9.5	11.5	2.0		

FUSE COVER

FH-13

MATERIAL:SOFT P.V.C
 COLOR:BLACK
 UNIT:mm

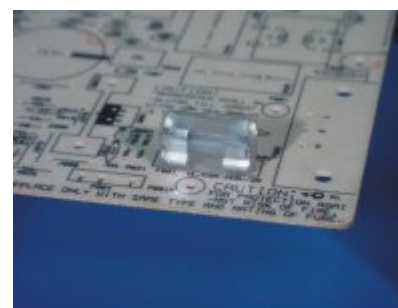
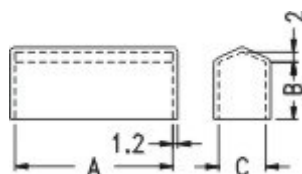


PARTNO	PACKAGE
FH-13	1000

FUSE COVER

FUSE

MATERIAL:SOFT P.V.C
 COLOR:NATURAL/BLUE
 UNIT:mm

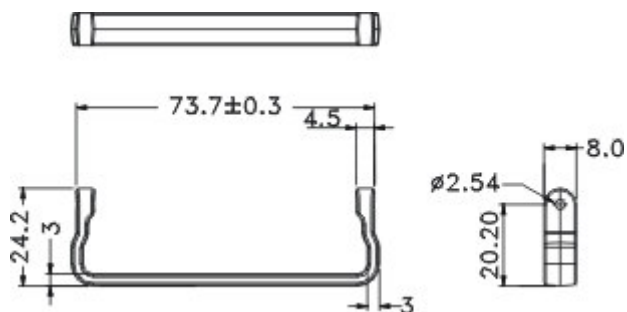


PARTNO	A	B	C	PACKAGE
FUSE-1	20.0	11.0	6.0	1000
FUSE-2	31.8	11.5	9.5	500
FUSE-3	36.1	9.9	8.1	1000

HANDLE BRACKET

HAND-73

MATERIAL:PC/ABS
 FLAME CLASS:94V-0
 COLOR:BLACK
 UNIT:mm



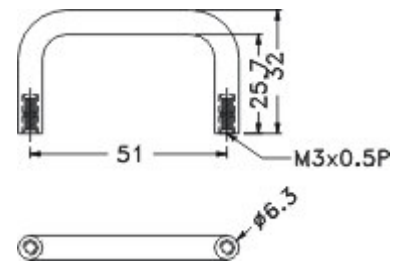
PARTNO	PACKAGE
HAND-73	100



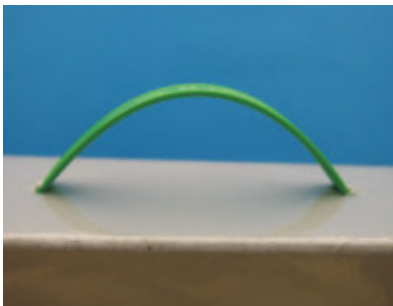
HANDLE BRACKET

HANU-51

MATERIAL:PC/ABS
 FLAME CLASS:94V-0
 COLOR:BLACK
 UNIT:mm



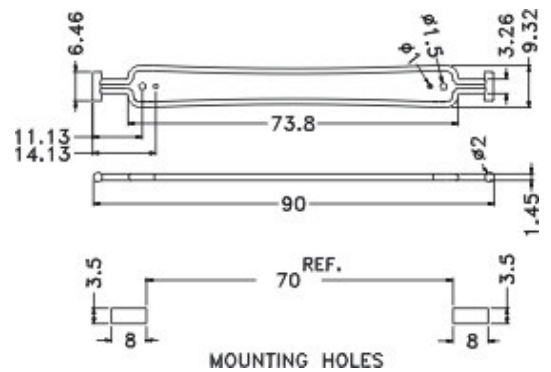
PARTNO	PACKAGE
HANU-51	100



HANDLE BRACKET

HAND-7

MATERIAL:NYLON 66(UL)
 FLAMW:94V-2
 COLOR:GREEN
 UNIT:mm



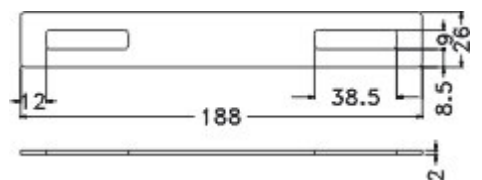
PARTNO	PACKAGE
HAND-7	100



HANDLE BRACKET

HAND-2

MATERIAL:P.E
 COLOR:BLACK
 UNIT:mm

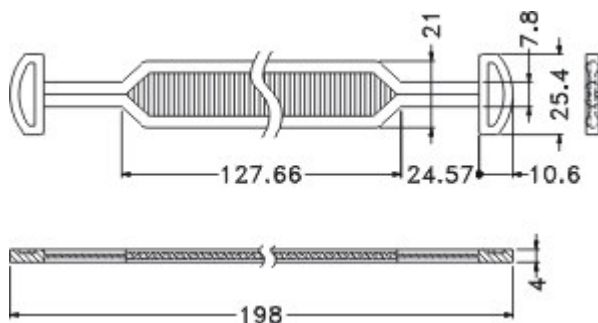


PARTNO	PACKAGE
HAND-2	100

HANDLE BRACKET

HAND-1

MATERIAL:P.E
 COLOR:BLACK
 UNIT:mm

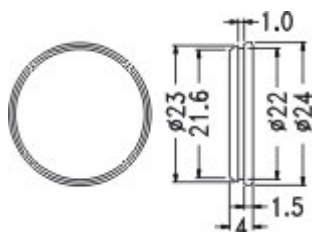


PARTNO	PACKAGE
HAND-1	100

SOFT COVER

CDELT-1

MATERIAL:TPE
 COLOR:WHITE
 UNIT:mm

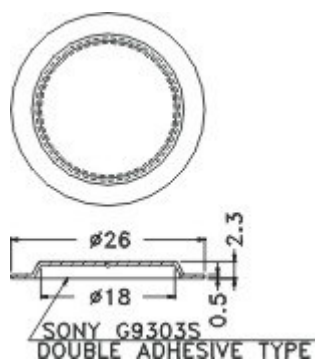


PARTNO	PACKAGE
CDELT-1	500

BUMPER FOOT

SCD-8

MATERIAL:NYLON66(UL)
 FLAME CLASS:94V-0
 COLOR:BLACK
 UNIT:mm



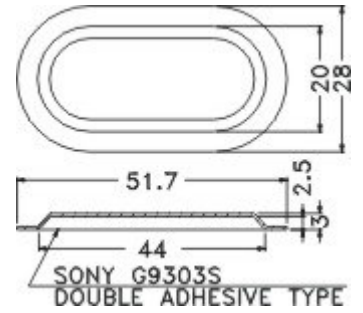
PARTNO	PACKAGE
SCD-8	2000



BUMPER FOOT

SCD-7

MATERIAL:NYLON66(UL)
 FLAME CLASS:94V-0
 COLOR:BLACK
 THICKNESS:0.6
 UNIT:mm



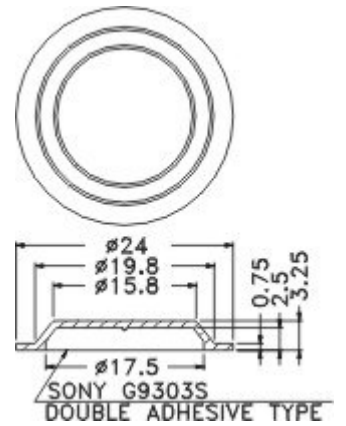
PARTNO	PACKAGE
SCD-7	2000



BUMPER FOOT

SCD-6

MATERIAL:NYLON66(UL)
 FLAME CLASS:94V-2
 COLOR:BLACK
 THICKNESS:0.75
 UNIT:mm



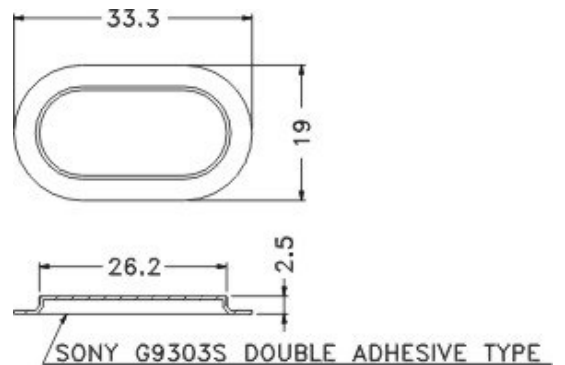
PARTNO	PACKAGE
SCD-6	2000



BUMPER FOOT

SCD-5

MATERIAL:NYLON66(UL)
 FLAME CLASS:94V-2
 COLOR:BLACK
 THICKNESS:0.5
 UNIT:mm

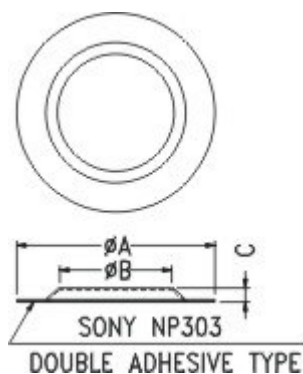


PARTNO	PACKAGE
SCD-5	2000

FOOT BUMPER

SCD

MATERIAL:PC FILM(UL)
 FLAME CLASS:94V-0
 COLOR:BLACK
 THICKNESS:0.3
 UNIT:mm

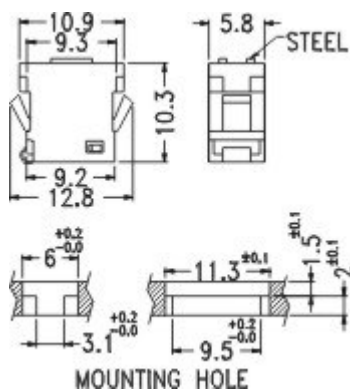


PART NO	A	B	C	PACKAGE
SCD-1	24.0	15.0	2.0	1000
SCD-2	31.5	18.0	2.2	500
SCD-3	32.0	22.0		
SCD-4	37.0			

MAGNET LOCK

DTM-2

MATERIAL:NYLON 66(UL)94V-2
 CLIP MATERIAL:SP
 COLOR:BLACK
 UNIT:mm

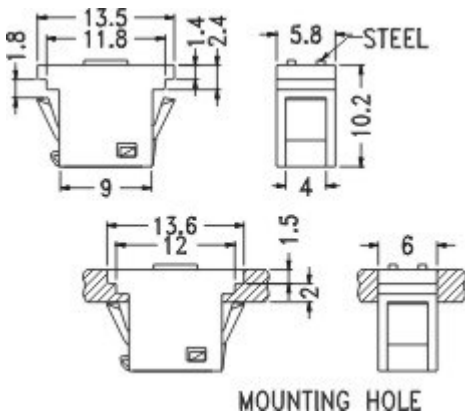


PARTNO	PACKAGE
DTM-2	500

MAGNET LOCK

DTM-1

MATERIAL:NYLON 66(UL)94V-2
 CLIP MATERIAL:SP
 COLOR:BLACK
 UNIT:mm

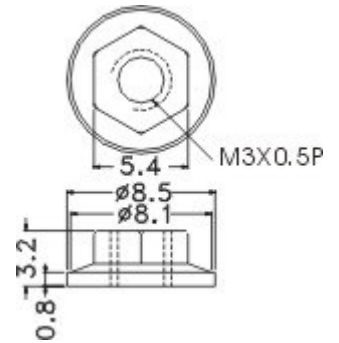


PARTNO	PACKAGE
DTM-1	500



NUT
MO-3

MATERIAL:NYLON 66(UL)
FLAME CLASS:94V-2
COLOR:NATURAL
UNIT:mm

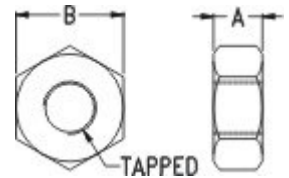


PARTNO	PACKAGE
MO-3	1000



NUT
M

MATERIAL:NYLON 66(UL)
FLAME CLASS:94V-2
COLOR:NATURAL
UNIT:mm



PART NO	A	B	THREAD	PACKAGE
M-2	1.4	3.95	M2.0X0.4P	2000
M-2.6	2.0	5.0	M2.6X0.45P	
M-3	2.5	5.5	M3X0.5P	
M-3.5	2.8	5.9	M3.5X0.6P	
M-4	3.3	6.9	M4X0.7P	1000
M-5	4.4	8.0	M5X0.8P	
S4-40	2.5	6.4	4-40 UNC	
S6-32	3.2	7.9	6-32 UNC	



PLUG
PCA-1

MATERIAL:NYLON 66(UL)
FLAME CLASS:94V-2
COLOR:NATURAL
UNIT:mm
DRILL SIZE:3/16(4.7)



PARTNO	PACKAGE
PCA-1	1000

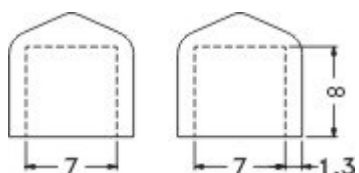
CONNECTOR COVER—SOFT

VC0707008B

MATERIAL:SOFT P.V.C

COLOR:BLACK

UNIT:mm



PART NO	PACKAGE
VC0707008B	1000

SPACER

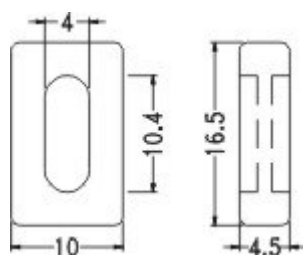
DVT-1

MATERIAL:NYLON66(UL)

FLAME CLASS:94V-2

COLOR:BLACK

UNIT:mm



PARTNO	PACKAGE
DVT-1	1000

SPACER

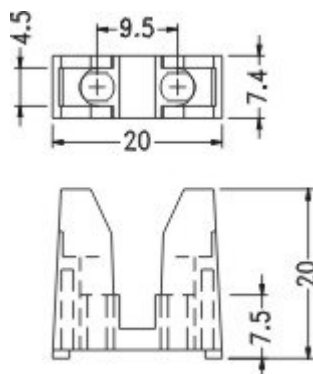
PHC-1

MATERIAL:P.B.T(UL)

FLAME CLASS:94V-0

COLOR:NATURAL

UNIT:mm



PARTNO	PACKAGE
PHC-1	500

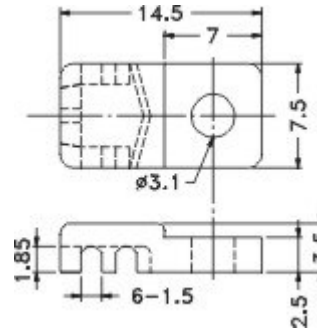


TRANSISTOR SPACER

PH-2

MATERIAL:P.B.T(UL)
 FLAME CLASS:94V-0
 COLOR:NATURAL
 UNIT:mm

PARTNO	PACKAGE
PH-2	1000

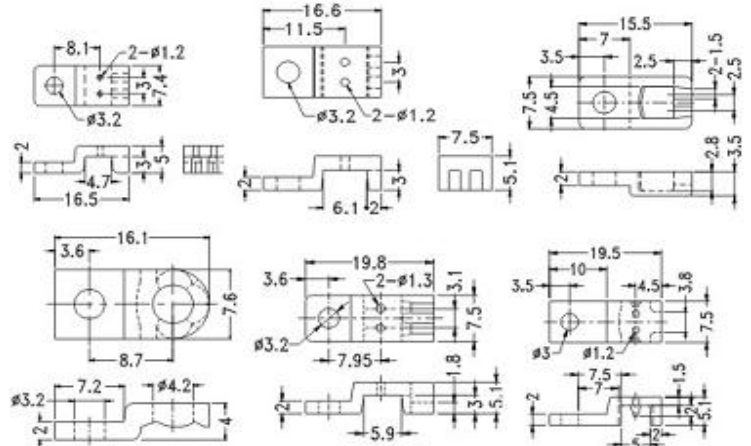


TRANSISTOR

PH

MATERIAL:P.B.T(UL)
 FLAME CLASS:94V-0
 COLOR:NATURAL
 UNIT:mm

PARTNO	PACKAGE	PARTNO	PACKAGE	PARTNO	PACKAGE
PH-1	1000	PH-1A	1000	PH-2A	1000
PH-3	1000	PH-5	1000	PH-7	1000

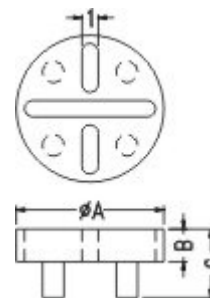


TRANSISTOR SPACER

BW

MATERIAL:NYLON 66(UL)
 FLAME CLASS:94V-2
 COLOR:NATURAL
 UNIT:mm

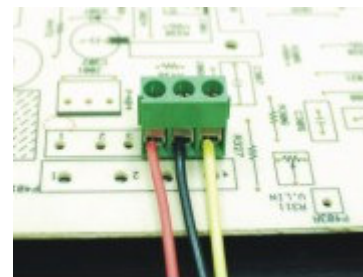
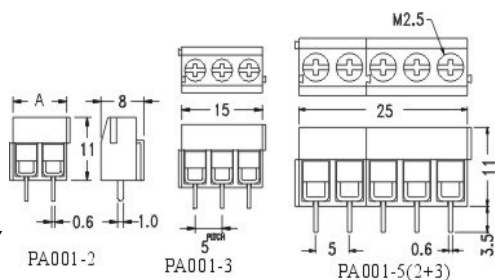
PART NO	A	B	C	PACKAGE
BW-1	9.0	2.0	4.2	2000
BW-2	14.0	1.0	2.1	



CONTACT TERMINAL

PA001

MATERIAL:
 HOUSING:NTLON 66 UL94V-2
 TERMINAL:TIN PLATED BRASS
 SCREW:M2.5,PLATED STEEL
 COLOR:GREEN
 THESE 2 AND 3 POLES
 TERMINAL BLOCK CAN EASILY
 BE INTERLOCKED TO ANY
 REQUIRED LENGTH



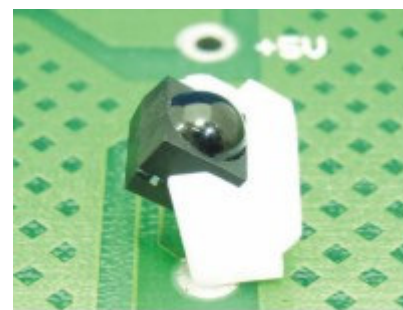
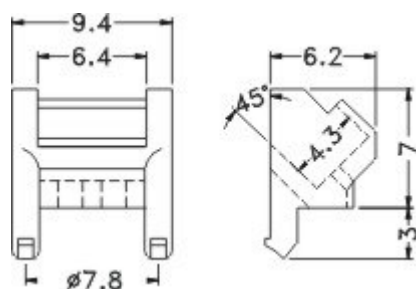
PART NO.	A
PA001-2	10.0
PA001-4	20.0
PA001-6	30.0
PA001-8	40.0
PA001-10	50.0

TECHNICAL DATA:
 WORKING TEMPTURE:105 °C
 WIRE RANGE:26-14AWG
 VOLTAGE:250V
 CURRENT:10A

CAMERA HOLDER

RECD-1

MATERIAL:NYLON66(UL)
 FLAME CLASS:94V-2
 COLOR:NATURAL
 UNIT:mm

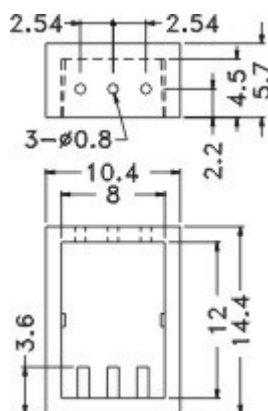


PARTNO	PACKAGE
RECD-1	1000

CAMERA HOLDER

RCEC-2

MATERIAL:NYLON66(UL)
 FLAME CLASS:94V-2
 COLOR:BLACK
 UNIT:mm



PARTNO	PACKAGE
RCEC-2	1000

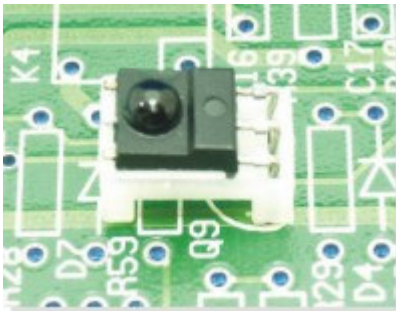
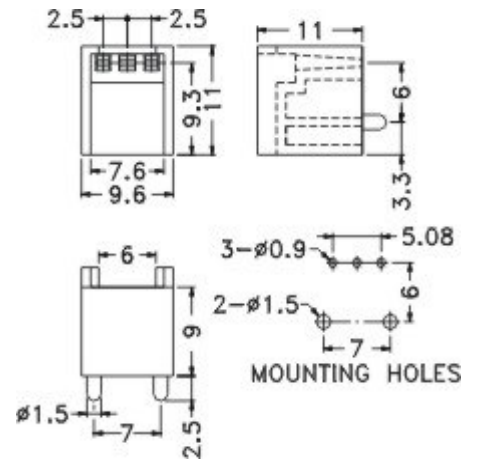


CAMERA HOLDER

RCEB-9

MATERIAL:NYLON66(UL)
 FLAME CLASS:94V-2
 COLOR:NATURAL
 UNIT:mm

PARTNO	PACKAGE
RCEB-9	1000

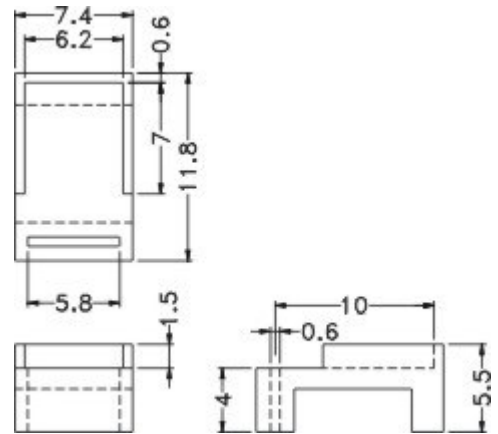


CAMERA HOLDER

RCEA-4

MATERIAL:NYLON66(UL)
 FLAME CLASS:94V-2
 COLOR:NATURAL
 UNIT:mm

PARTNO	PACKAGE
RCEA-4	1000

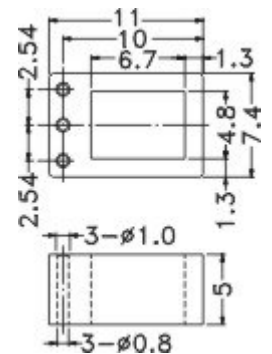


CAMERA HOLDER

RCEA-5

MATERIAL:NYLON66(UL)
 FLAME CLASS:94V-2
 COLOR:NATURAL
 UNIT:mm

PARTNO	PACKAGE
RCEA-5	1000

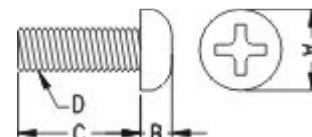


SCREW M-UNC

M2

MATERIAL:P.C(UL)/NYLON 66
 FLAME CLASS:94V-2
 COLOR:NATURAL
 UNIT:mm

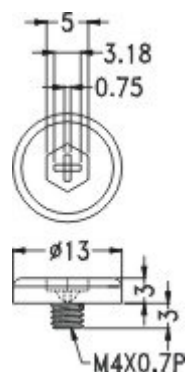
PARTNO	A	B	C	D	PACKAGE
M2-3	3.3	1.4	3.0	M2X0.4P	2000
M2-4	3.3	1.4	4.0	M2X0.4P	
M2-5	3.3	1.4	5.0	M2X0.4P	
M2-6	3.3	1.4	6.0	M2X0.4P	
M2-6.5	3.3	1.4	6.5	M2X0.4P	
M2-8	3.3	1.4	8.0	M2X0.4P	
M2-10	3.3	1.4	10.0	M2X0.4P	
★M2.6-4	4.3	1.5	4.0	M2.6X0.45P	
★M2.6-5	4.3	1.5	5.0	M2.6X0.45P	
M2.6-6	4.3	1.5	6.0	M2.6X0.45P	
M2.6-8	4.3	1.5	8.0	M2.6X0.45P	
M2.6-10	4.3	1.5	10.0	M2.6X0.45P	
M3-4	5.5	2.1	4.0	M3X0.5P	1000
M3-6	5.5	2.1	6.0	M3X0.5P	
M3-8	5.5	2.1	8.0	M3X0.5P	
M3-10	5.5	2.1	10.0	M3X0.5P	2000
M3-12	5.5	2.1	12.0	M3X0.5P	1000
M3-15	5.5	2.1	15.0	M3X0.5P	
M3-17	5.5	2.1	17.0	M3X0.5P	
M3-18	5.5	2.1	18.0	M3X0.5P	
M3-20	5.5	2.1	20.0	M3X0.5P	
M3-25	5.5	2.1	25.0	M3X0.5P	
M4-8	7.0	2.5	8.0	M4X0.7P	
M4-10	7.0	2.5	10.0	M4X0.7P	
M4-12	7.0	2.5	12.0	M4X0.7P	
M4-14	7.0	2.5	14.0	M4X0.7P	
M4-16	7.0	2.5	16.0	M4X0.7P	
M4-20	7.0	2.5	20.0	M4X0.7P	
M4-25	7.0	2.5	25.0	M4X0.7P	
M4-30	7.0	2.5	30.0	M4X0.7P	
M4-35	7.0	2.5	35.0	M4X0.7P	
M5-20	9.1	3.6	20.0	M5X0.8P	2000
R632-6	6.7	2.5	6.35	6-32 UNC	
R632-8	6.7	2.5	8.0	6-32 UNC	
R632-9	6.7	2.5	9.5	6-32 UNC	
R632-12	6.7	2.5	12.7	6-32 UNC	
R632-15	6.7	2.5	15.9	6-32 UNC	1000
R632-19	6.7	2.5	19.1	6-32 UNC	2000
R440-6	5.2	2.4	6.4	4-40 UNC	
R440-8	5.2	2.4	8.0	4-40 UNC	
R440-9	5.2	2.4	9.5	4-40 UNC	
R440-12	5.2	2.4	12.7	4-40 UNC	1000
R440-15	5.2	2.4	15.5	4-40 UNC	



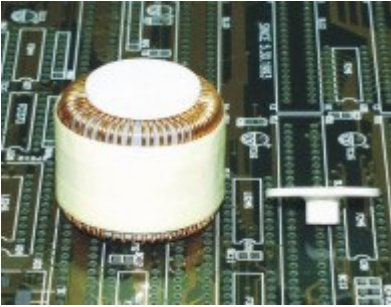
SCREW M4

MRL4-3

MATERIAL:NYLON (UL)
 FLAME CLASS:94V-2
 COLOR:BLACK
 UNIT:mm



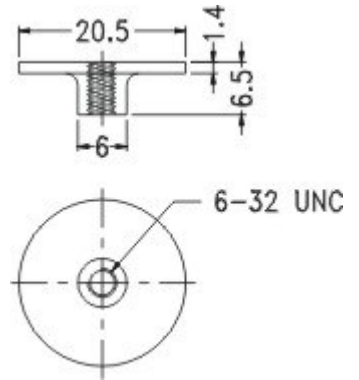
PARTNO	PACKAGE
MRL4-3	1000



SCREW

TRMH-20

MATERIAL:PBT(UL)
 FLAME CLASS:94V-0
 COLOR:NATURAL
 UNIT:mm



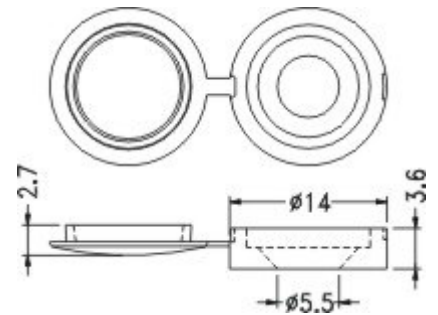
PARTNO	PACKAGE
TRMH-20	500



NUT COVER

SCW-3

MATERIAL:NYLON 66(UL)
 FLAME CLASS:94V-2
 COLOR:WHITE/BLACK
 UNIT:mm



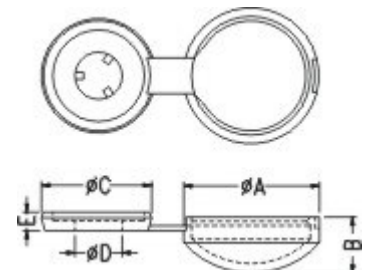
PARTNO	PACKAGE
SCW-3	1000



NUT COVER

SCW

MATERIAL:NYLON 66(UL)
 FLAME CLASS:94V-2
 COLOR:WHITE/BLACK
 UNIT:mm



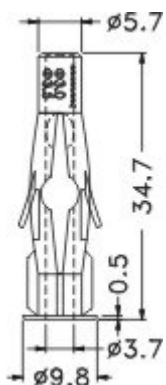
PARTNO	A	B	C	D	E	PACKAGE
SCW-1	9.8	4.1	8.0	3.3	1.3	1000
SCW-2	13.3	4.1	11.6	4.3	1.4	



PLUG

PCA-7

MATERIAL:NYLON 66(UL)
 FLAME CLASS:94V-2
 COLOR:GRAY
 UNIT:mm

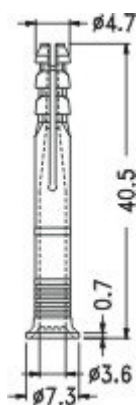


PARTNO	PACKAGE
PCA-7	1000

PLUG

PCA-5

MATERIAL:NYLON 66(UL)
 FLAME CLASS:94V-2
 COLOR:NATURAL
 UNIT:mm

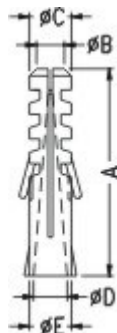


PARTNO	PACKAGE
PCA-5	1000

PLUG

PEB6

MATERIAL:PP
 COLOR:GRAY
 UNIT:mm



PART NO.	A	B	C	D	E	PACKAGE
PEB6-25	24.7	3.5	4.8	4.0	5.0	1000
PEB6-30	29.6	4.0	6.0	4.8	6.0	

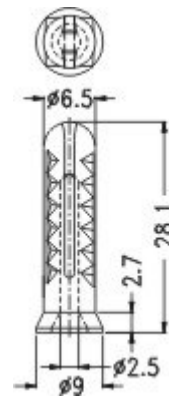


PARTNO	PACKAGE
PEC5-28	1000

PLUG

PEC5-28

MATERIAL:PP
 COLOR:NATURAL
 UNIT:mm

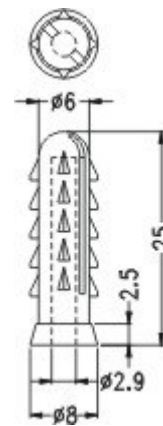


PARTNO	PACKAGE
PEB3-25	1000

PLUG

PEB3-25

MATERIAL:PP
 COLOR:NATURAL
 UNIT:mm

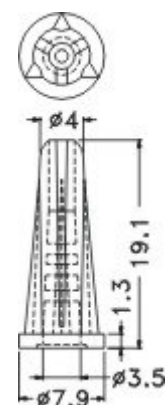


PARTNO	PACKAGE
PCA-6	1000

PLUG

PCA-6

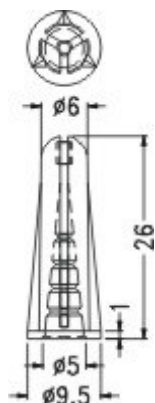
MATERIAL:NYLON 66(UL)
 FLAME CLASS:94V-2
 COLOR:NATURAL
 UNIT:mm



PLUG

PCA-4

MATERIAL:P.P
 COLOR:NATURAL
 UNIT:mm

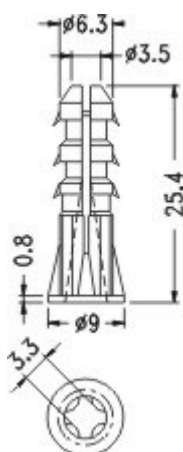


PARTNO	PACKAGE
PCA-4	1000

PLUG

PCA-2

MATERIAL:P.P
 COLOR:GRAY/BLACK
 UNIT:mm

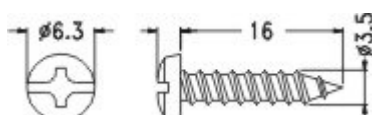


PARTNO	PACKAGE
PCA-2	1000

SCREW

STP-3.5

MATERIAL:NYLON 66(UL)
 FLAMEP CLASS:94V-2
 COLOR:NATURAL
 UNIT:mm
 DRILL SIZE:3/16(4.7)



PARTNO	PACKAGE
STP-3.5	1000



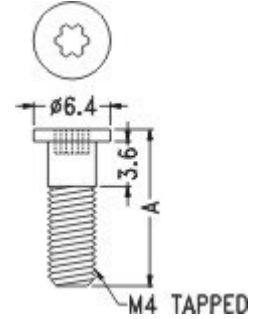


SCREW

MR4

MATERIAL:P.C(UL)
 FLAME CLASS:94V-2
 COLOR:CLEAR
 UNIT:mm

PART NO	A	PACKAGE
MR4-9.5	9.5	1000
MR4-12	12.0	

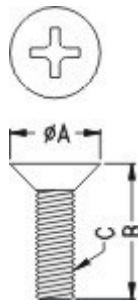


SCREW

M3

MATERIAL:P.C(UL)/NYLON (UL)
 FLAME CLASS:94V-2
 COLOR:NATURAL
 UNIT:mm

PART NO	A	B	C	PACKAGE
M3-5F	5.3	4.8	M3X0.5P	1000
M3-6F	5.6	6.0	M3X0.5P	
M3-8F	5.6	8.0	M3X0.5P	
M3-10F	5.6	10.0	M3X0.5P	
M3-12F	5.6	12.0	M3X0.5P	
M3-14F	5.6	14.0	M3X0.5P	
M4-8F	7.6	8.0	M4X0.7P	
M4-10F	7.6	10.0	M4X0.7P	
M4-12F	7.6	12.0	M4X0.7P	
M4-14F	7.6	14.0	M4X0.7P	
M4-16F	7.6	16.0	M4X0.7P	
M5-15F	9.1	14.8	M5X0.8P	

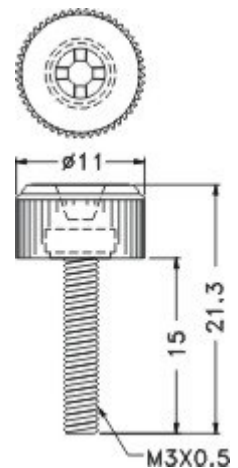


FINGER SCREW

GPE3-15

HEAD MATERIAL:ABS UL94V-0
 BODY FINISH:SAE-1018 NICKEL PLATED
 UNIT:mm

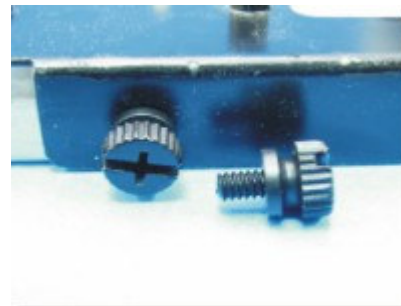
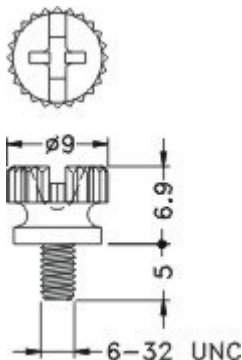
PARTNO	PACKAGE
GPE3-15	1000



FINGER SCREW

RSUS362

MATERIAL: NYLON 66(UL)
 FLAME CLASS: 94V-2
 COLOR: NATURAL/BLACK
 UNIT: mm

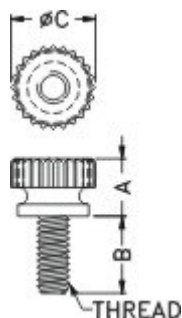


PARTNO	PACKAGE
RSUS362	1000

FINGER SCREW

SUS

MATERIAL: NYLON 66(UL)
 FLAME CLASS: 94V-2
 COLOR: NATURAL
 UNIT: mm

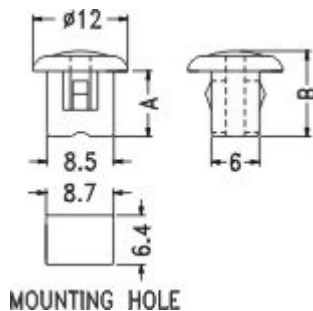


PART NO.	A	B	C	THREAD	COLOR	PACKAGE
SUS632	6.9	9.8	9.0	6-32 UNC	NATURAL	1000
SUS832(B)	7.2	9.6	10.6	8-32 UNC	BLACK	

PCB SPACER

LHC

MATERIAL: NYLON 66(UL)
 FLAME CLASS: 94V-2
 COLOR: NATURAL/WHITE
 UNIT: mm



PART NO	A	B	PACKAGE
LHC-8	8.4	10.8	1000
LHC-12	12.5	14.9	



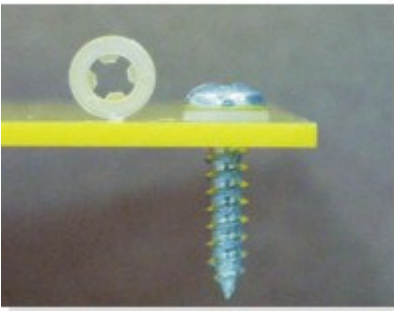
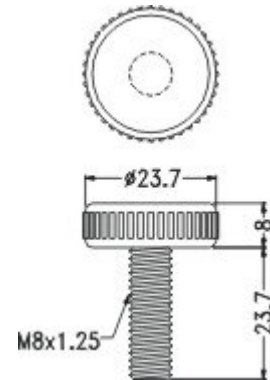


FINGER SCREW

GPE8-32

MATERIAL:P.P.
BODY FINISH:NICKEL PLATED
UNIT:mm

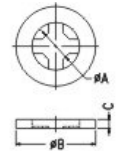
PARTNO	PACKAGE
GPE8-32	1000



PLASTIC TAP SCREW

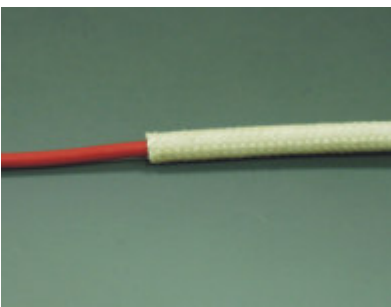
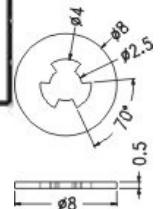
KWS

MATERIAL:NYLON66(UL)
FLAME CLASS:94V-2
COLOR:NATURAL
UNIT:mm



PART NO.	A	B	C	FOR SCREW	PACKAGE
KWS-3	2.5	6.7	0.8	M3	2000
KWS-4	3.3	8.0	1.0	M4	
★ KWS-632	3.2	8.3	0.8	M6-32 UNC	

PART NO	PACKAGE
KYWS-3	2000



HV-WIRE ISOLATOR

T1

COLOR:WHITE
UNIT:mm



PART NO.	INSIDE DIAMETER	THICKNESS	PACKAGE
T1	1.0	0.28	200M
T2	2.0	0.28	
T3	3.0	0.28	
T4	4.0	0.30	100M
T5	5.0	0.30	
T6	6.0	0.30	
T7	7.0	0.30	50M
T8	8.0	0.35	
T9	9.0	0.35	
T10	10.0	0.35	
T12	12.0	0.36	
T14	14.0	0.36	
T16	16.0	0.36	

SCREW

M3.5

MATERIAL:P.C(UL)/NYLON (UL)
 FLAME CLASS:94V-2
 COLOR:NATURAL
 UNIT:mm



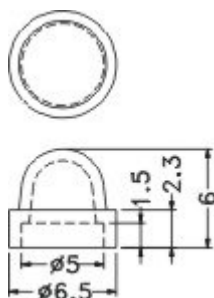
PART NO	A	B	C	D	PACKAGE
M3.5-10	6.9	10.0	2.2	M3.5X0.6P	1000
M3.5-15	6.9	15.0	2.2	M3.5X0.6P	
M3.5-20	6.9	20.0	2.2	M3.5X0.6P	
M3.5-25	6.9	25.0	2.2	M3.5X0.6P	
M3.5-30	6.9	30.0	2.2	M3.5X0.6P	
S632-6	6.7	6.35	2.5	6-32 UNC	2000
S632-8	6.7	8.0	2.5	6-32 UNC	
S632-9	6.7	9.5	2.5	6-32 UNC	
S632-12	6.7	12.7	2.5	6-32 UNC	
S632-15	6.7	15.9	2.5	6-32 UNC	
S632-19	6.7	19.1	2.5	6-32 UNC	1000
S632-25	6.7	25.4	2.5	6-32 UNC	
S632-28	6.7	28.0	2.5	6-32 UNC	
S440-6	5.2	6.4	2.1	4-40 UNC	
S440-8	5.2	8.0	2.1	4-40 UNC	
S440-9	5.2	9.5	2.1	4-40 UNC	2000
S440-12	5.2	12.7	2.1	4-40 UNC	
S440-15	5.2	15.5	2.1	4-40 UNC	
					1000



NUT COVER

SWV-4

MATERIAL:NYLON 66(UL)
 FLAME CLASS:94V-2
 COLOR:NATURAL
 UNIT:mm

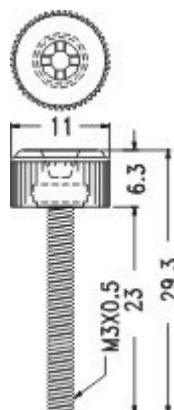


PARTNO	PACKAGE
SWV-4	1000

FINGER SCREW

GPE3-23

HEAD MATERIAL:ABS UL94V-0
 BODY FINISH:SAE-1018 NICKEL PLATED
 UNIT:mm



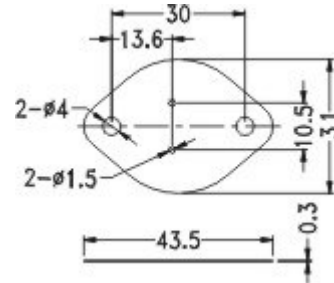
PARTNO	PACKAGE
GPE3-23	1000



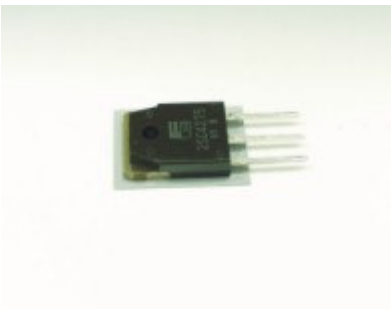
THERMAL PAD

TO-3

MATERIAL:SILICON(UL)
 FLAME CLASS:94V-0
 COLOR:GRAY
 UNIT:mm



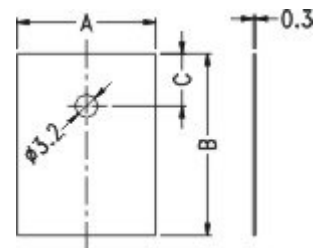
PARTNO	PACKAGE
TO-3	1000



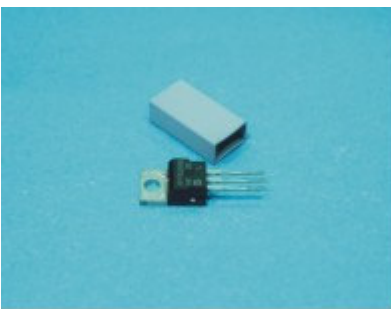
THERMAL PAD

TO-3P

MATERIAL:SILICON(UL)
 FLAME CLASS:94V-0
 COLOR:GRAY
 UNIT:mm



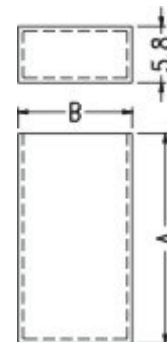
PARTNO	A	B	C	PACKAGE
TO-3P	19.0	25.0	7.2	1000
TO-220	13.2	19.0	5.0	



THERMAL PAD

TO

MATERIAL:SILICON(UL)
 FLAME CLASS:94V-0
 COLOR:GRAY
 UNIT:mm

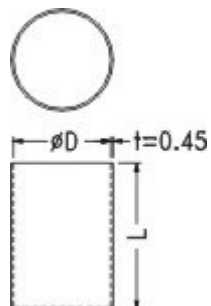


PART NO	A	B	THICKNESS	PACKAGE
TO-3PCV	28.5	17.5	0.45	1000
TO-3PCV-A	25.0	18.5		
TO-220CV	21.7	11.5		

THERMAL PAD

SCT

MATERIAL:SILICON(UL)
 FLAME CLASS:94V-0
 COLOR:GRAY
 UNIT:mm

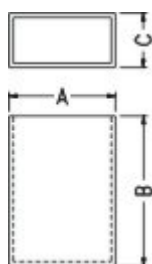


PART NO	D	L	PACKAGE
SCT-0726	7.8	26.0	500
SCT-1615	16.7	15.0	
SCT-1925	18.7	25.0	

THERMAL PAD

SRT

MATERIAL:SILICON(UL)
 FLAME CLASS:94V-0
 COLOR:GRAY
 UNIT:mm



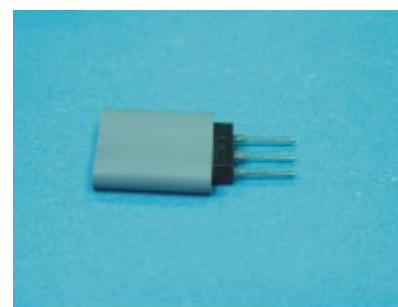
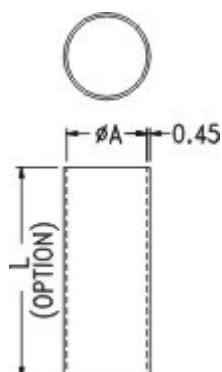
PART NO	A	B	C	THICKNESS	PACKAGE
SRT-111758	11.4	16.0	5.8	0.45	500
SRT-182864	18.0	28.5	6.4	0.75	
SRT-203464	20.0	35.0	6.4	0.75	

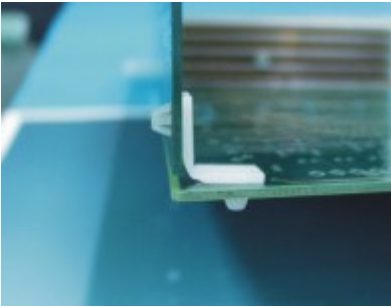
THERMAL PAD

SRT-H

MATERIAL:SILICON(UL)
 FLAME CLASS:94V-0
 COLOR:GRAY
 UNIT:mm

PART NO	A
SRT6	6.0
SRT8	8.0
SRT10	10.0
SRT12	12.0
SRT14	14.0
SRT16	16.0
SRT18	18.0
SRT20	20.0

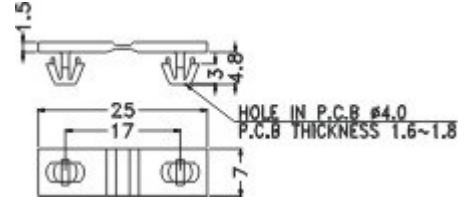




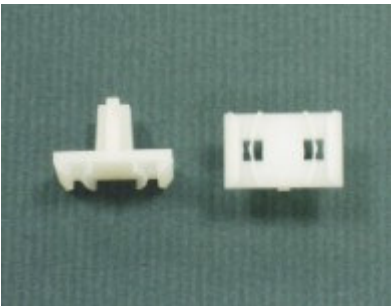
PCB HINGE

LPZ-1

MATERIAL: NYLON 66(UL)
 FLAME CLASS: 94V-2
 COLOR: NATURAL
 UNIT: mm



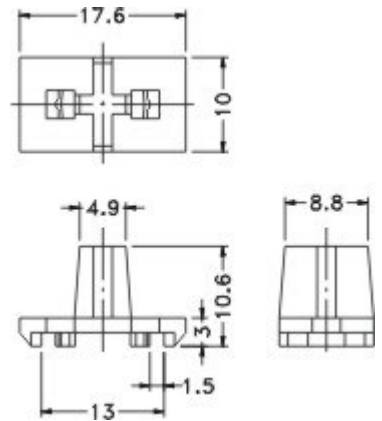
PARTNO	PACKAGE
LPZ-1	1000



LOCK

LIH-8

MATERIAL: NYLON 66(UL)
 FLAME CLASS: 94V-2
 COLOR: NATURAL
 UNIT: mm



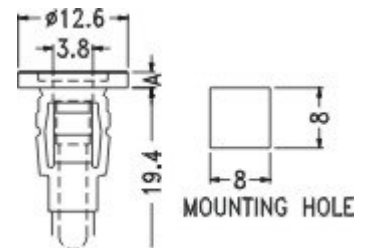
PARTNO	PACKAGE
LIH-8	2000



SCREW PLUG

YES

MATERIAL: NYLON 66(UL)
 FLAME CLASS: 94V-2
 COLOR: NATURAL
 UNIT: mm



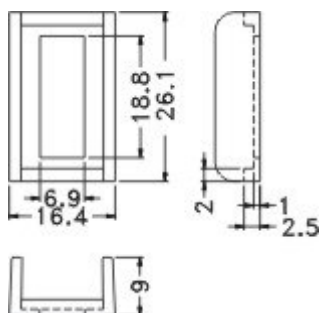
PARTNO.	A	PACKAGE
YES-08	0.8	500
YES-32	3.2	
YES-48	4.8	



HOLDER

SCAB-7

MATERIAL:ABS(UL)
 FLAME CLASS:94V-0
 COLOR:BLACK
 UNIT:mm

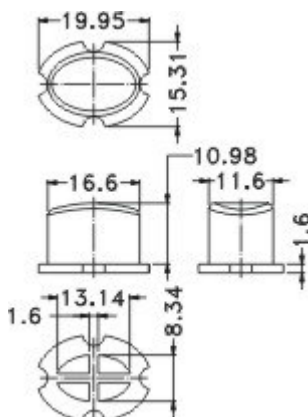


PARTNO	PACKAGE
SCAB-7	500

COVER

TSC-9

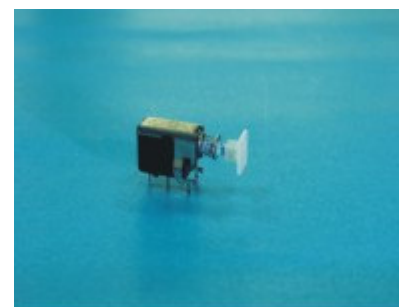
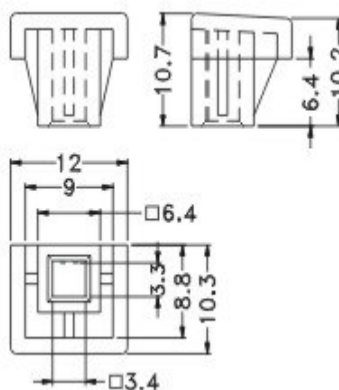
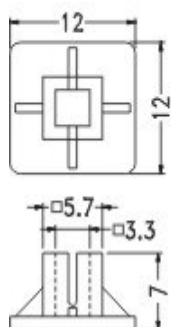
MATERIAL:ABS(UL)
 FLAME CLASS:94V-0
 COLOR:GRAY
 UNIT:mm



PARTNO	PACKAGE
TSC-9	1000

PARTNO	PACKAGE
SWCL-7	1000

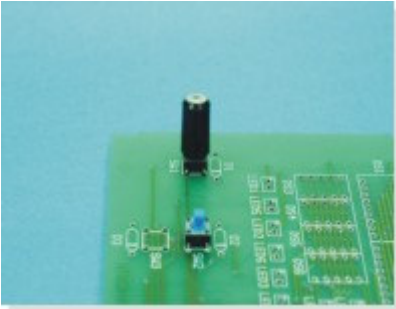
PARTNO	PACKAGE
SWCL-10	1000



COVER

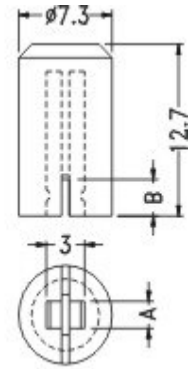
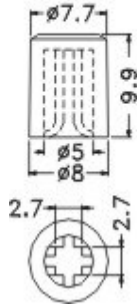
SWCL

MATERIAL:NYLON66(UL)
 MATERIAL:SWCL-10=ABS(UL)
 FLAME CLASS:94V-2/SWCL-10=94V-0
 COLOR:NATURAL
 UNIT:mm



PART NO	PACKAGE
TSC-6	1000

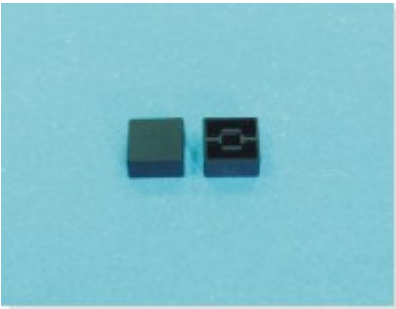
PART NO	A	B	PACKAGE
TSC-4	2.0	3.0	1000
TSC-5	3.0	4.2	



PUSH COVER

TSC

MATERIAL:ABS(UL)
 MATERIAL:TSC-6=NYLON66(UL)
 FLAME CLASS:94HB/TSC-6=94V-2

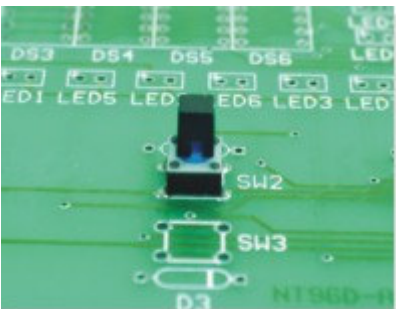
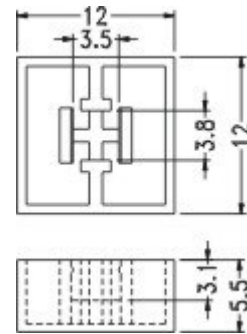


PUSH COVER

TSC-3

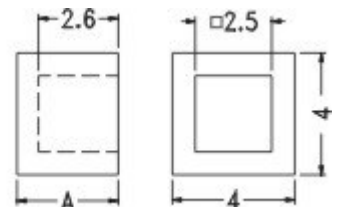
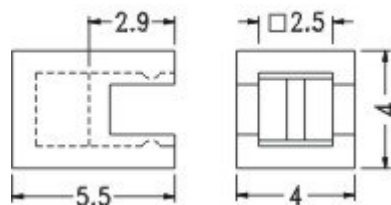
MATERIAL:ABS(UL)
 FLAME CLASS:94HB
 COLOR:BLACK
 UNIT:mm

PARTNO	PACKAGE
TSC-3	1000



PARTNO	PACKAGE
TSC-1	1000

PART NO.	A	PACKAGE
TSC-2	3.3	2000
TSC-2A	4.0	



PUSH COVER

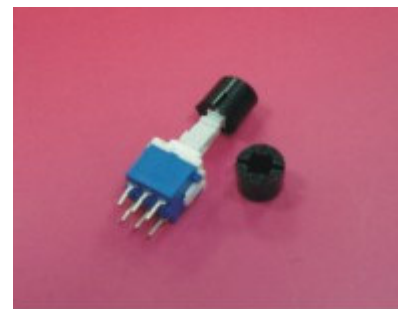
TSC

MATERIAL:ABS(UL)
 FLAME CLASS:94HB
 COLOR:BLACK



PARTNO	PACKAGE
TSC-11	1000

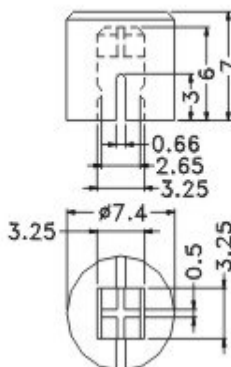
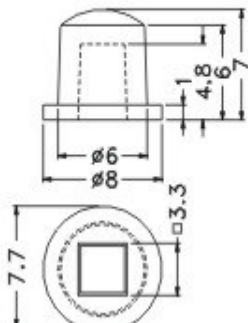
PARTNO	PACKAGE
TSC-10	1000



PUSH COVER

TSC

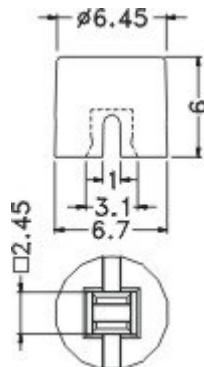
MATERIAL:ABS(UL)
 FLAME CLASS:94-HB
 COLOR:NATURAL
 UNIT:mm



PUSH COVER

TSC-8

MATERIAL:NYLON66(UL)
 FLAME CLASS:94V-2
 COLOR:BLACK
 UNIT:mm

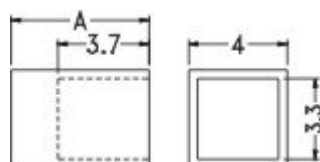
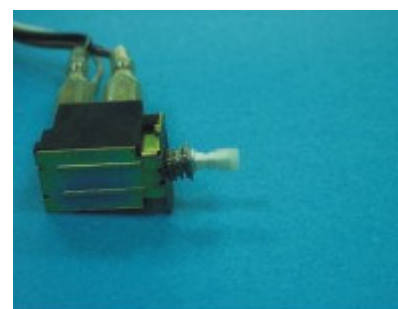


PARTNO	PACKAGE
TSC-8	1000

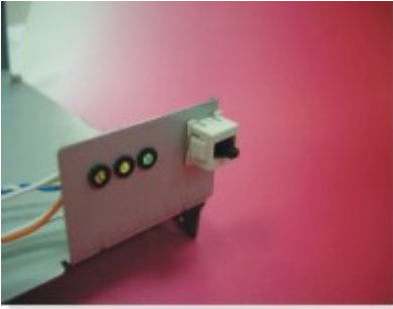
PUSH-COVER

SWC

MATERIAL:NYLON66(UL)
 FLAME CLASS:94V-2
 COLOR:NATURAL
 UNIT:mm



PART NO	A	PACKAGE
SWC-1	5.6	2000
SWC-2	4.7	



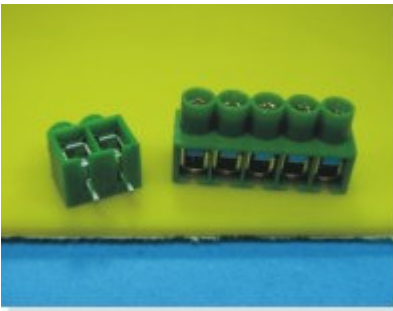
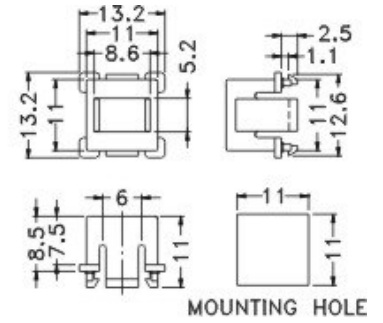
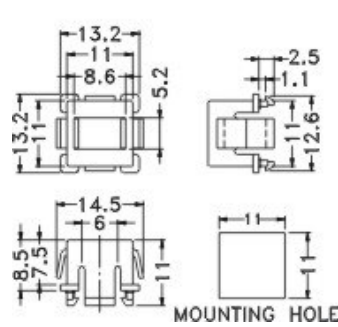
COVER

TSC

MATERIAL:ABS(UL)
 FLAME CLASS:94HB
 COLOR:COMPUTER
 UNIT:mm

PARTNO	PACKAGE
TSC-7	1000

PART NO	PACKAGE
TSC-7Y	1000

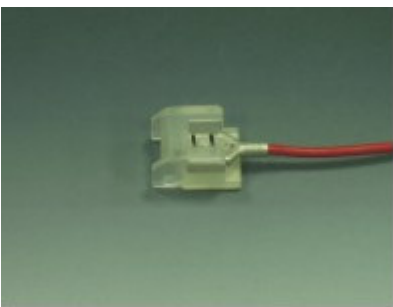
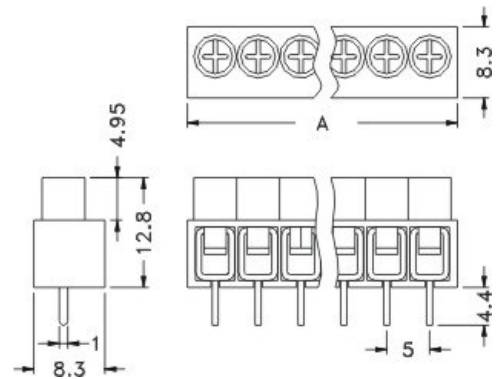


DC-TERMINAL

PA003

HOUSING MATERIAL:NYLON 66 UL94V-2
 WORKING TEMPERATURE:105°
 COLOR:GREEN

PART NO.	A
PA003-2	11.5
PA003-3	16.5
PA003-4	21.5
PA003-5	26.5
PA003-6	31.5
PA003-8	41.5
PA003-10	51.5

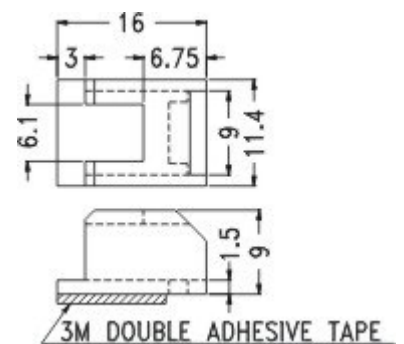


HOLDER

PCTT-1

MATERIAL:PC(UL)
 FLAME CLASS:94V-2
 COLOR:NATURAL
 UNIT:mm

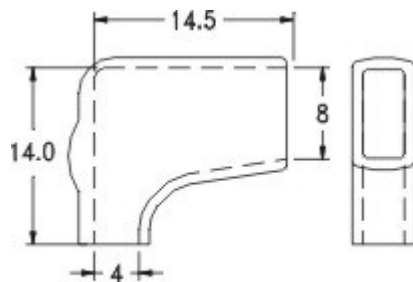
PARTNO	PACKAGE
PCTT-1	1000



SOFT COVER

610301

MATERIAL:SOFT P.V.C
 COLOR:NATURAL
 UNIT:mm



WIRE SIZE(O.D): ϕ 4.0



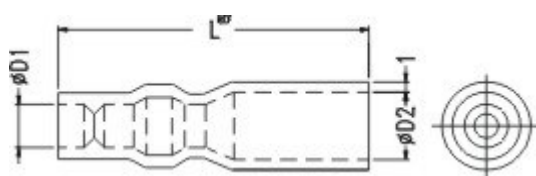
PARTNO	PACKAGE
610301	1000

SOFT COVER

R

MATERIAL:SOFT P.V.C
 COLOR:NATURAL/BLUE

UNIT:mm



PART NO	D1	D2	L	PACKAGE
R5025	2.5	5.0	33.0	1000
R5028	2.8	5.0	33.0	
R5030	3.1	5.0	33.0	
R5035	3.5	5.2	33.0	
R4028	2.8	5.0	32.0	

SOFT COVER

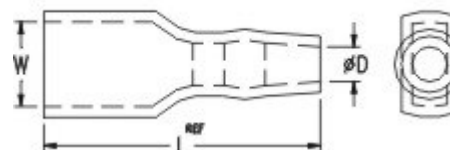
S

MATERIAL:SOFT P.V.C
 COLOR:NATURAL/BLUE
 UNIT:mm

SERIES-110					
PART NO	W	D	L	WIRE SIZE(O.D)	PACKAGE
S4020	4.0	2.0	22.0	2.0	1000
S4025	4.0	2.5	22.0	2.5	
S4028	4.0	2.8	22.0	2.8	
S4030	4.0	3.0	22.0	3.0	
S4035	4.0	3.5	22.0	3.0	
SERIES-187					
PART NO	W	D	L	WIRE SIZE(O.D)	PACKAGE
S5825	5.8	2.5	22.0	2.5	1000
S5830	5.8	3.0	22.0	3.0	
S5835	5.8	3.5	22.0	3.5	
S5840	5.8	4.0	22.0	3.5	
SERIES-205					
PART NO	W	D	L	WIRE SIZE(O.D)	PACKAGE
S6525	6.5	2.5	24.0	2.5	1000
S6530	6.5	3.0	24.0	3.0	
S6535	6.5	3.5	24.0	3.5	
S6540	6.5	4.0	24.0	4.0	
SERIES-250					
PART NO	W	D	L	WIRE SIZE(O.D)	PACKAGE
S8030	7.8	3.0	26.0	3.0	1000
S8035	7.8	3.5	27.0	3.5	
S8040	8.0	4.0	27.0	4.0	
S8045	8.0	4.5	27.0	4.5	
S8050	7.8	5.0	27.0	5.0	



FLAT INSULATING SLEEVES

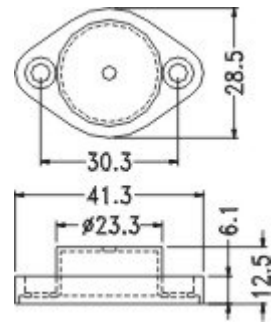




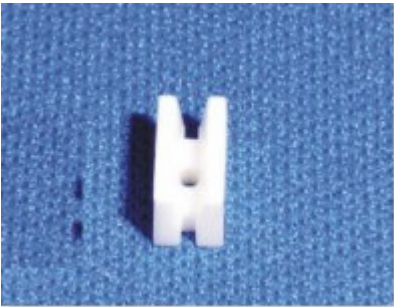
TO3-COVER

TRC-1

MATERIAL:NYLON66(UL)
 FLAME CLASS:94V-2
 COLOR:NATURAL/BLACK
 UNIT:mm



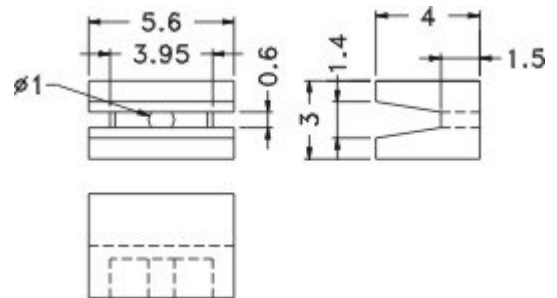
PARTNO	PACKAGE
TRC-1	200



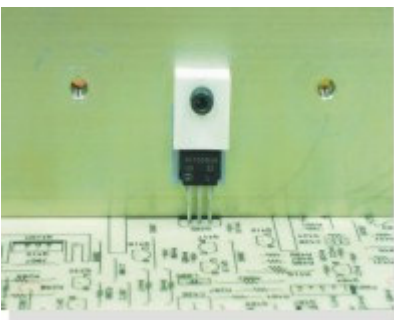
TRANSISTOR MOUNTER TO 220

TR-9

MATERIAL:NYLON66(UL)
 FLAME CLASS:94V-2
 COLOR:NATURAL
 UNIT:mm



PARTNO	PACKAGE
TR-9	1000

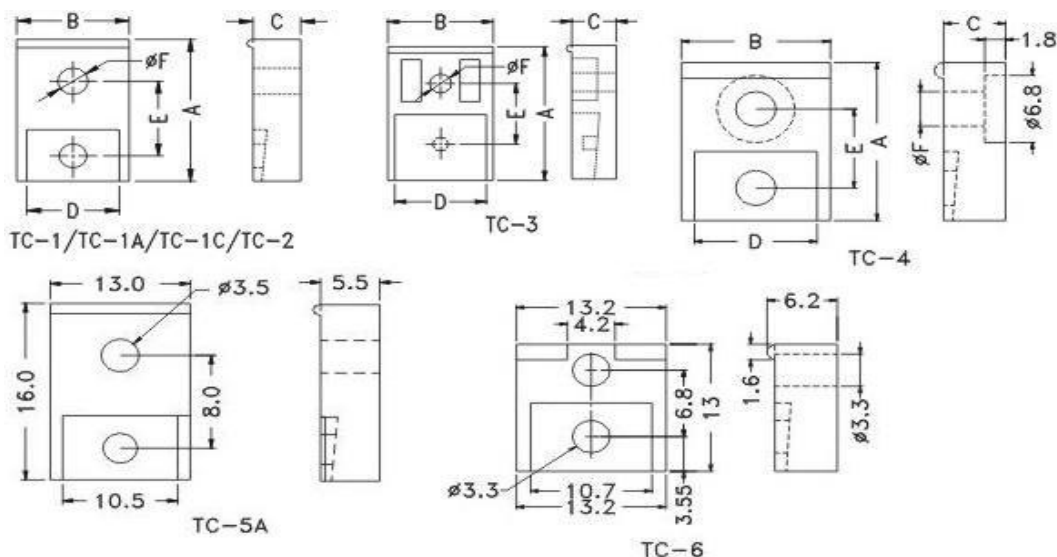


TRANSISTOR MOUNTER TO 220

TC

MATERIAL:P.B.T
 FLAME CLASS:94V-0
 COLOR:NATURAL
 UNIT:mm

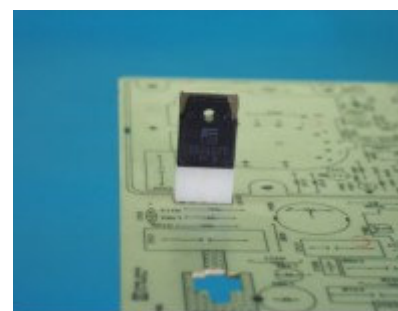
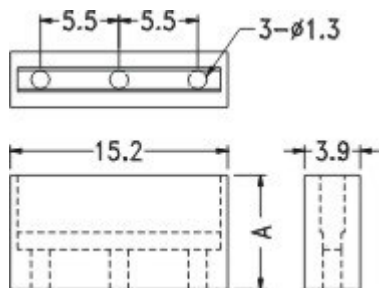
PART NO	A	B	C	D	E	F	PACKAGE
TC-1	16.0	13.0	5.4	10.7	8.0	3.5	500
TC-1A	19.3	13.0	5.4	10.7	10.0	3.6	
TC-1C	17.8	13.0	5.5	10.7	9.3	3.5	
TC-2	19.0	18.0	6.0	16.4	10.5	3.5	
TC-3	28.0	19.0	8.0	16.5	12.8	3.9	200
TC-4	16.0	13.0	5.4	10.7	8.0	3.5	1000



TRANSISTOR MOUNTER TO 220

TRW

MATERIAL: NYLON66(UL)
 FLAME CLASS: 94V-2
 COLOR: NATURAL
 UNIT: mm

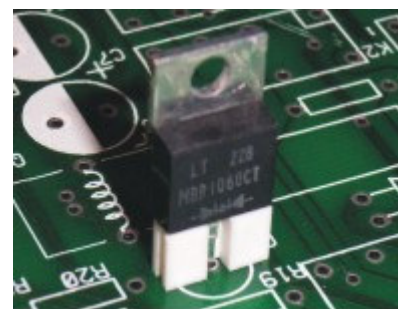
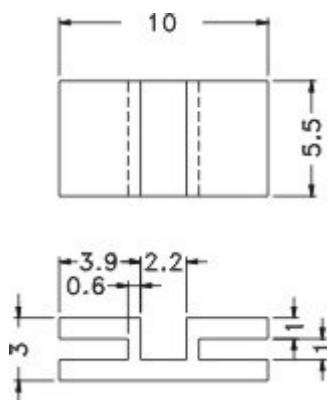


PART NO	A	PACKAGE
TRW-8	8.0	1000
TRW-10	10.0	

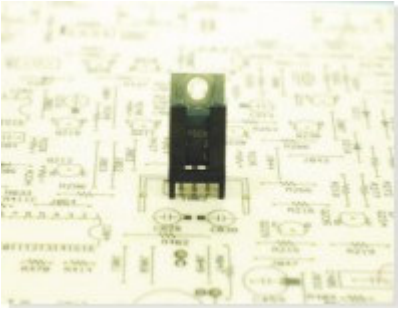
TRANSISTOR MOUNTER TO 220

TR-10

MATERIAL: P.B.T(UL)
 FLAME CLASS: 94V-0
 COLOR: NATURAL
 UNIT: mm



PARTNO	PACKAGE
TR-10	1000

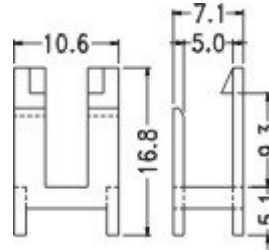


TRANSISTOR MOUNTER TO 220

TR-5

MATERIAL:NYLON(UL)
 FLAME CLASS:94V-2
 COLOR:BLACK
 UNIT:mm

PARTNO	PACKAGE
TR-5	1000

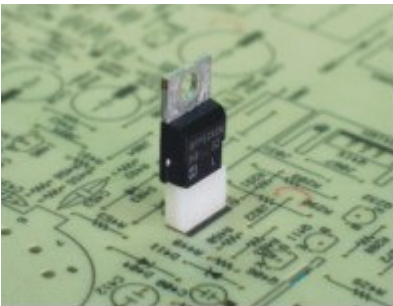
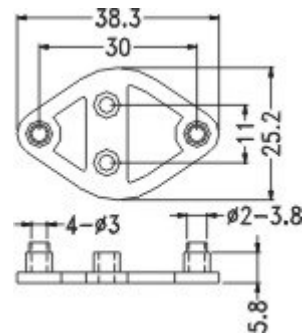


TRANSISTOR MOUNTER TO 3

TR-4

MATERIAL:NYLON(UL)
 FLAME CLASS:94V-2
 COLOR:NATURAL
 UNIT:mm

PART NO	PACKAGE
TR-4	500

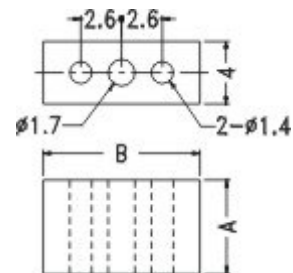


TRANSISTOR MOUNTER TO 220

TR3

MATERIAL:NYLON(UL)
 FLAME CLASS:94V-2
 COLOR:NATURAL/BLACK
 UNIT:mm

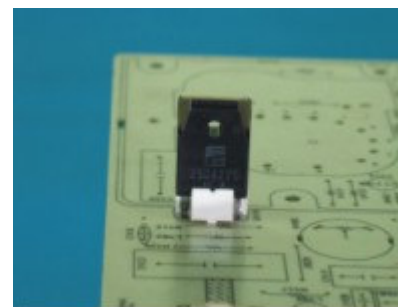
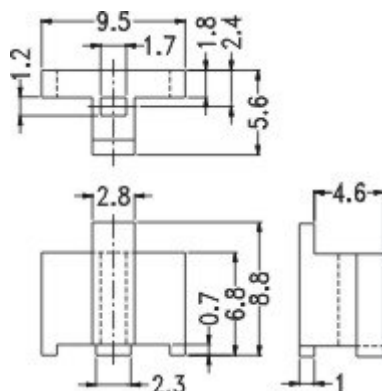
PART NO.	A	B	PACKAGE
TR3-3S	3.0	9.8	1000
TR3-3	3.7	9.8	
TR3-4	4.0	9.8	
TR-3	6.0	9.8	
TR3-5	5.0	10.0	
TR3-7	7.0	9.8	



TRANSISTOR MOUNTER TO 220

TR-8

MATERIAL:P.B.T(UL)
 FLAME CLASS:94V-0
 COLOR:BLACK
 UNIT:mm

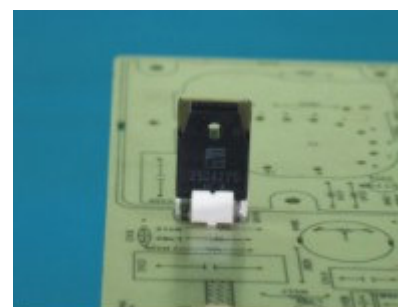
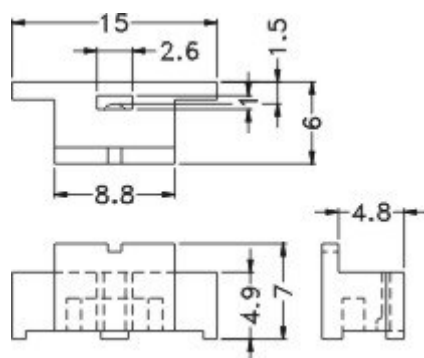


PARTNO	PACKAGE
TR-8	1000

TRANSISTOR MOUNTER TO 220

TR-7

MATERIAL:P.B.T(UL)
 FLAME CLASS:94V-0
 COLOR:NATURAL
 UNIT:mm

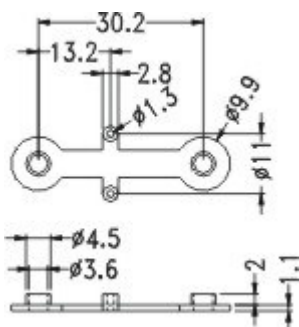


PARTNO	PACKAGE
TR-7	1000

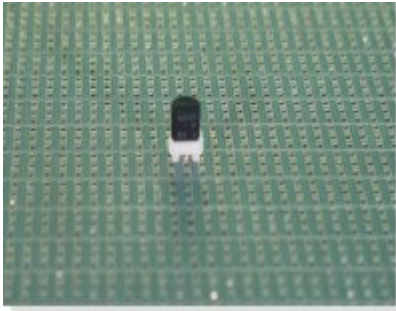
TRANSISTOR MOUNTER TO3

TR-6

MATERIAL:NYLON(UL)
 FLAME CLASS:94V-0
 COLOR:NATURAL
 UNIT:mm



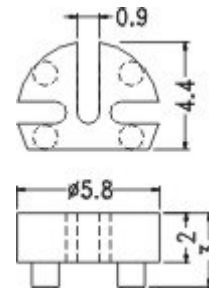
PARTNO	PACKAGE
TR-6	1000



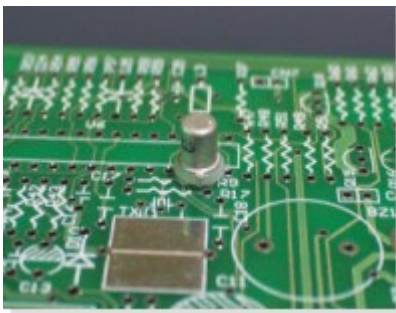
TRANSISTOR SPACER

TO-92

MATERIAL:NYLON 66(UL)
 FLAME CLASS:94V-2
 COLOR:NATURAL
 UNIT:mm



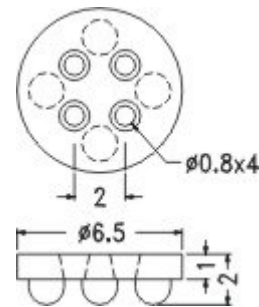
PARTNO	PACKAGE
TO-92	2000



TRANSISTOR SPACER

TO-18M

MATERIAL:NYLON 66(UL)
 FLAME CLASS:94V-2
 COLOR:NATURAL
 UNIT:mm



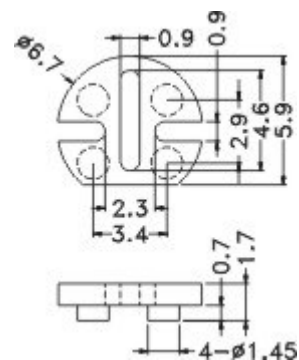
PARTNO	PACKAGE
TO-18M	2000



TRANSISTOR SPACER

TO-18S

MATERIAL:NYLON 66(UL)
 FLAME CLASS:94V-2
 COLOR:NATURAL
 UNIT:mm

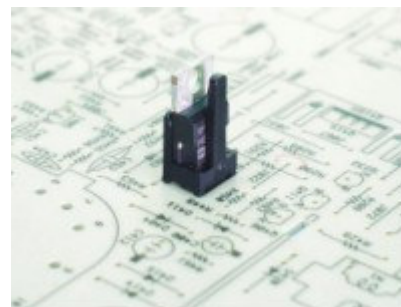
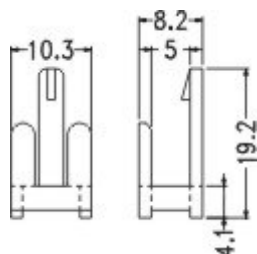


PARTNO	PACKAGE
TO-18S	1000

TRANSISTOR MOUNTER TO 220

TR-2

MATERIAL:NYLON(UL)
 FLAME CLASS:94V-2/94V-0
 COLOR:BLACK
 UNIT:mm

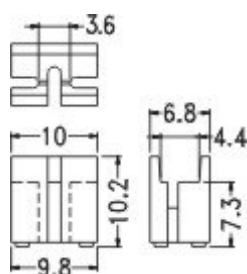


PARTNO	PACKAGE
TR-2	1000

TRANSISTOR MOUNTER TO 220

TR-1

MATERIAL:NYLON(UL)
 FLAME CLASS:94V-2
 COLOR:BLACK
 UNIT:mm

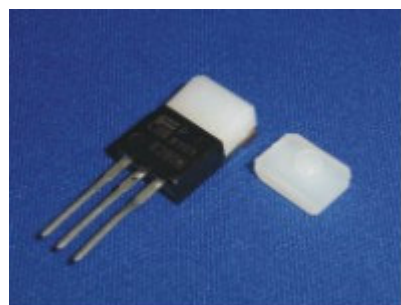
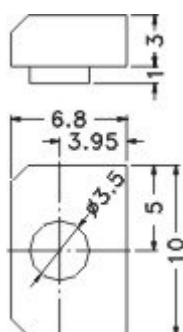


PARTNO	PACKAGE
TR-1	1000

TRANSISTOR MOUNTER TO 220

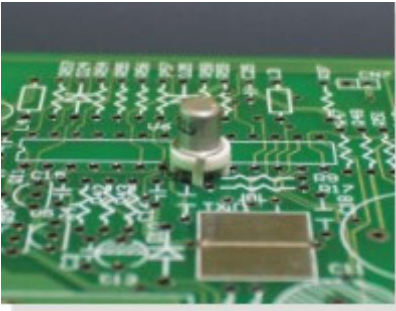
TRF-1

MATERIAL:NYLON 66(UL)
 FLAME CLASS:94V-2
 COLOR:NATURAL
 UNIT:mm



PARTNO	PACKAGE
TRF-1	2000

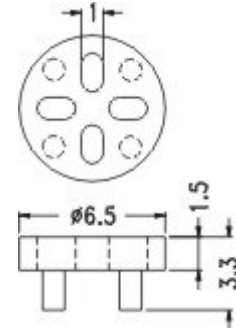




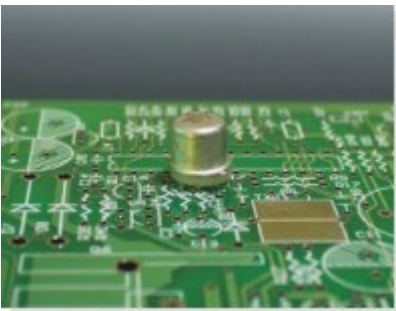
TRANSISTOR SPACER

TO-18

MATERIAL:NYLON 66(UL)
 FLAME CLASS:94V-2
 COLOR:NATURAL
 UNIT:mm



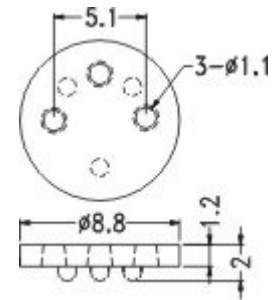
PARTNO	PACKAGE
TO-18	1000



TRANSISTOR SPACER

TO-05S

MATERIAL:NYLON 66(UL)
 FLAME CLASS:94V-2
 COLOR:NATURAL
 UNIT:mm



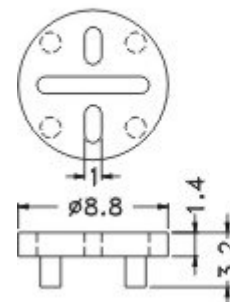
PARTNO	PACKAGE
TO-05S	2000



TRANSISTOR SPACER

TO-05

MATERIAL:P.B.T(UL)
 FLAME CLASS:94V-0
 COLOR:NATURAL
 UNIT:mm

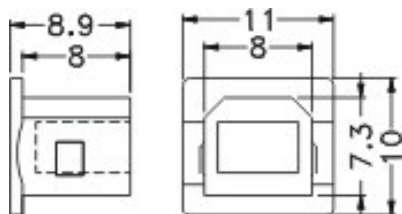


PARTNO	PACKAGE
TO-05	1000

CONNECTOR COVER

USBC-3

MATERIAL:PP
 COLOR:BLACK
 UNIT:mm

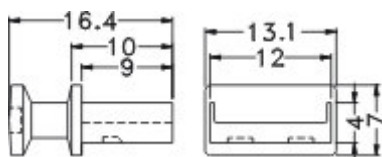


PARTNO	PACKAGE
USBC-3	1000

CONNECTOR COVER

USBC-2

MATERIAL:ABS
 FLAME CLASS:94HB
 COLOR:BLACK
 UNIT:mm

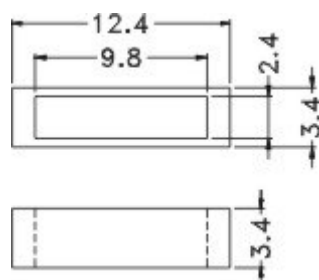


PARTNO	PACKAGE
USBC-2	1000

COMPONENT ISOLATOR

SQCP-3.4

MATERIAL:NYLON66(UL)
 FLAME CLASS:94V-2
 COLOR:NATURAL
 UNIT:mm



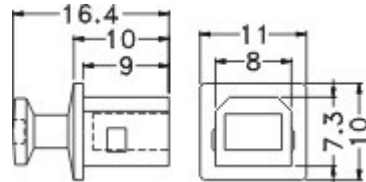
PARTNO	PACKAGE
SQCP-3.4	2000



CONNECTOR COVER

USBC-1

MATERIAL:ABS
 FLAME CLASS:94HB
 COLOR:BLACK
 UNIT:mm



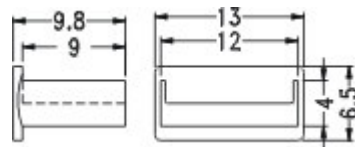
PARTNO	PACKAGE
USBC-1	1000



CONNECTOR COVER

USBC-4

MATERIAL:PP
 COLOR:COMPUTER
 UNIT:mm



PARTNO	PACKAGE
USBC-4	1000

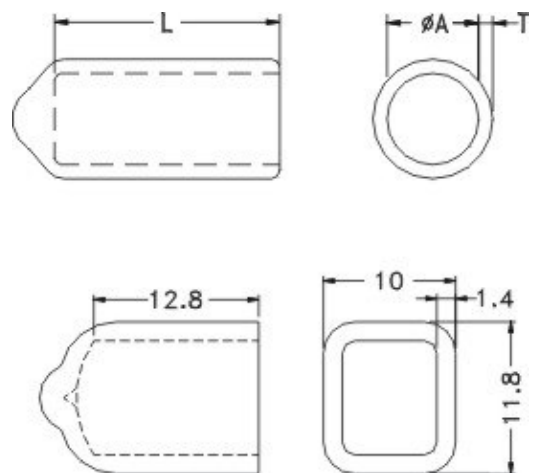


SOFT COVER

VCP

MATERIAL:SOFT P.V.C
 COLOR:NATURAL/RED/BLACK/YELLOW/
 GREEN/BLUE/WHITE
 UNIT:mm

PART NO.	A	L	T	
VCP02012	2.0	12.0	0.8	1000
VCP02609	2.6	9.0	0.8	
VCP02655	2.6	5.5	0.8	
VCP02608	2.6	8.0	0.8	
★VCP03206	3.2	6.0	0.8	
VCP03210	3.2	10.0	0.8	
VCP03213	3.2	13.0	0.8	
VCP04006	4.0	6.0	0.8	
VCP04008	4.0	8.0	0.8	
VCP04832	4.0	32.0	0.8	
★VCP04809	4.8	9.0	1.0	
VCP04813	4.8	13.0	0.8	
VCP05710	5.7	10.0	1.0	
VCP05708	5.7	8.0	1.0	
VCP05713	5.7	13.0	1.0	
VCP06008	6.0	8.0	1.0	
VCP06012	6.0	12.0	1.0	
VCP06013	6.3	13.0	1.0	
VCP07013	7.0	13.0	1.0	
VCP07020	7.0	20.0	1.0	
VCP07608	7.6	8.0	1.0	
VCP08010	8.0	10.0	1.0	
VCP08509	8.5	9.0	1.0	
VCP08515	8.5	15.0	1.0	
VCP09516	9.5	16.0	1.0	
VCP10020	10.0	20.0	1.2	
VCP11420	11.4	20.0	1.2	
VCP12016	12.0	16.0	1.2	
VCP14035	14.0	35.0	1.2	
VCP15014	15.0	14.0	1.2	
VCP17813	17.8	13.0	1.2	
VCP22016	22.0	16.0	1.2	
				500

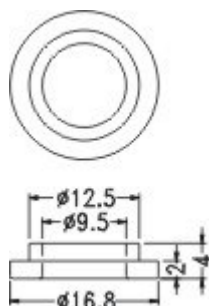


PART NO	PACKAGE
VC907413	500

WASHER

FUG-1

MATERIAL: NYLON66(UL)
 FLAME CLASS: 94V-2
 COLOR: NATURAL
 UNIT: mm

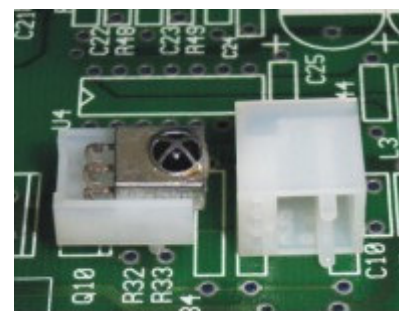
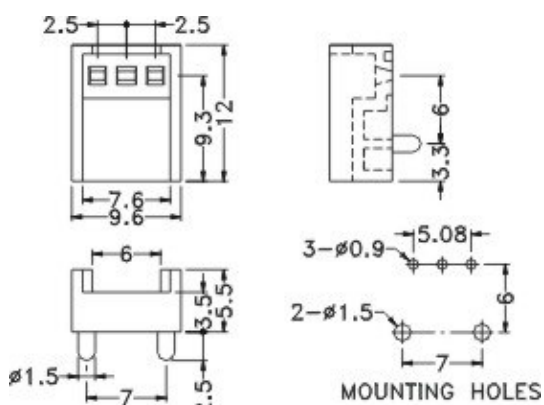


PARTNO	PACKAGE
FUG-1	1000

COMPONENT HOLDER

RCEB-3.5

MATERIAL: NYLON66(UL)
 FLAME CLASS: 94V-2
 COLOR: NATURAL
 UNIT: mm

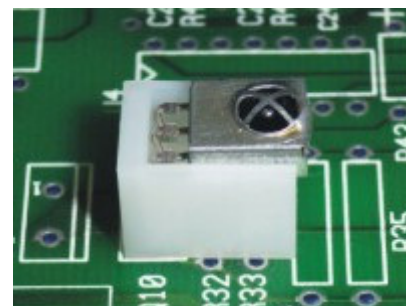
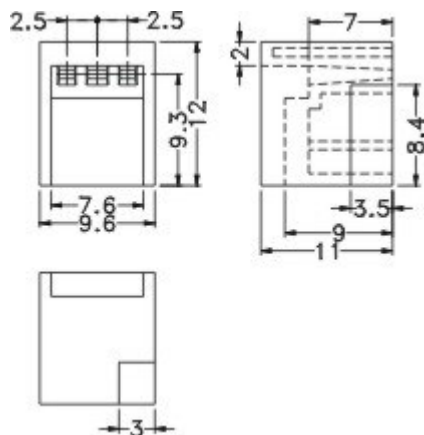


PARTNO	PACKAGE
RCEB-3.5	1000

COMPONENT HOLDER

RCEA-9

MATERIAL: NYLON66(UL)
 FLAME CLASS: 94V-2
 COLOR: NATURAL
 UNIT: mm



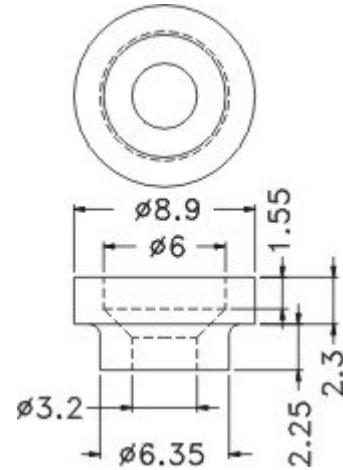
PARTNO	PACKAGE
RCEA-9	1000



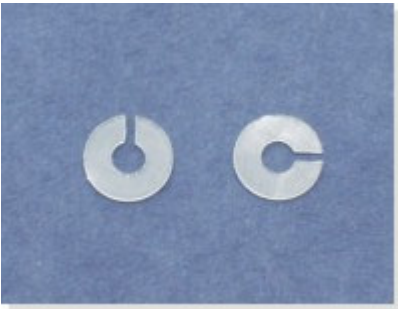
WASHER

WSF-3

MATERIAL:PC
 FLAME CLASS:94V-2
 COLOR:NATURAL
 UNIT:mm



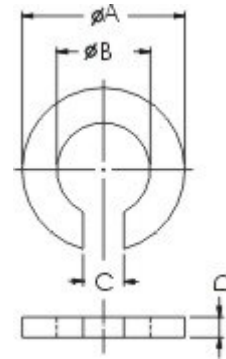
PARTNO	PACKAGE
WSF-3	2000



WASHER

COC

MATERIAL:NYLON66 UL94V-2
 (COC2-0.5 MATERIAL=PC)
 COLOR:NATURAL
 UNIT:mm



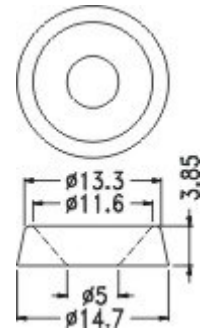
PARTNO.	A	B	C	D	PACKAGE
COC2-0.5	4.0	2.3	1.0	0.5	2000
COC5-4	8.0	5.0	2.5	4.0	1000



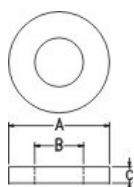
WASHER

WSU-515

MATERIAL:NYLON66(UL)
 FLAME CLASS:94V-2
 COLOR:NATURAL
 UNIT:mm



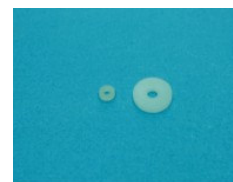
PARTNO	PACKAGE
WSU-515	2000



WASHER

WS

MATERIAL:NYLON66(UL)
WS3-5(6)MATERIAL:PVC
UNIT:mm



PART NO	A	B	C
WS2.1-0.8	4.5	2.1	0.8
WS2.5-0.5	4.5	2.5	0.5
WS2.5-0.5S	4.0	2.5	0.5
WS2.1-2	5.0	2.1	2.0
WS3.7-0.3	5.6	3.73	0.3
WS3.8-0.5	6.5	3.8	0.5
WS4-1	6.8	4.2	1.0
WS3-1	7.0	3.0	1.0
WS3.7-0.5	7.1	3.7	0.5
WS3.5-0.5	7.5	3.5	0.5
WS4-5	8.0	4.1	0.5
WS4-8	8.0	4.1	0.8
WS4-10	8.0	4.1	1.0
WS4-15	8.0	4.1	1.5
WS4-20	8.0	4.1	2.0
WS4-3	8.0	4.6	0.3
WS5-5	8.0	5.0	5.0

PART NO	A	B	C
★ WS12-5-2	12.0	5.0	2.0
WS30-6-1.5	30.0	6.0	1.5
★ WS42-19-05	4.2	1.9	0.5
★ WS45-2-08	4.5	2.0	0.8
★ WS5-3.1-1	5.0	3.1	1.0
★ WS6-23-08	6.0	2.3	0.8
★ WS6-2.7-3	6.0	2.7	3.0
★ WS6-31-05	6.0	3.1	0.5
★ WS6-3.8-1	6.0	3.8	1.0
★ WS6-38-15	6.0	3.8	1.5
★ WS7-3-0.8	7.0	3.0	0.8
★ WS7-3.1-0.5	7.0	3.1	0.5
★ WS7-5-1.6	7.0	5.0	1.6
★ WS8-3.1-1	8.0	3.1	1.0
WS8-3.6-08	8.0	3.6	0.8
★ WS8-5-1	8.0	5.0	1.0
★ WS96-44-08	9.6	4.4	0.8

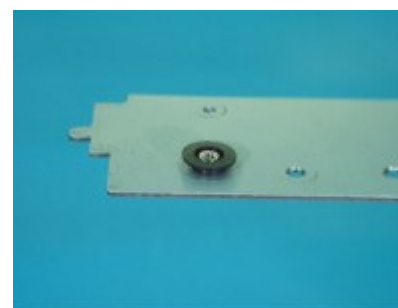
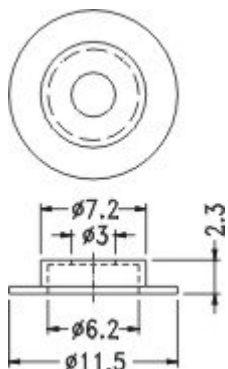
WS5-0.5	8.0	5.2	0.5
WS2-1.5	8.8	2.0	1.5
WS4.5-0.5	9.0	4.5	0.5
WS2.2-12	3.7	2.2	1.2
WS2.5-10	5.0	2.5	1.1
WS2-0.5	6.0	2.5	0.5
WS3-1.5	6.0	3.0	1.5
WS2.5-1	9.0	2.5	1.0
WS5-1	10.0	5.2	1.0
WS5-2	10.0	5.2	2.0
WS6-0.8	12.8	6.4	0.8
WS7-1	15.0	7.1	1.0
WS10-5	15.0	10.3	5.0
WS10-0.8	16.0	10.0	0.8
WS10-1.5	16.0	10.0	1.5
WS-16-11-32	16.0	11.4	3.2
WS8-1	18.0	8.2	1.0
WS5-1.2	19.5	5.0	1.2

WS10-3	20.7	10.0	3.0
WS19.1-0.5	21.8	19.1	0.5
WS13-2	23.0	13.0	2.0
WS8-3	24.0	8.05	3.0
WS40-1.5	45.5	40.0	1.5
WS3-5(6)	6.0	3.1	0.5
WS3-2	6.0	3.1	2.0
WS3-3.4	6.0	3.1	3.4
WS3-5	8.0	3.1	0.5
WS3-8	8.0	3.1	0.8
WS3-10	8.0	3.1	1.0
WS3-15	8.0	3.1	1.5
WS3-20	8.0	3.1	2.0

WASHER

WSC-1

MATERIAL:NYLON66(UL)
FLAME CLASS:94V-0
COLOR:BLACK
UNIT:mm



PARTNO	PACKAGE
WSC-1	2000